



Article

# Caffeine and Chlorogenic Acid Combination Attenuate Early-Stage Chemically Induced Colon Carcinogenesis in Mice: Involvement of oncomiR miR-21a-5p

Ariane Rocha Bartolomeu <sup>1,†</sup>, Guilherme Ribeiro Romualdo <sup>1,2,†</sup>, Carmen Griñán Lisón <sup>3,4,5</sup> , Zein Mersini Besharat <sup>6</sup> , Juan Antonio Marchal Corrales <sup>3,7</sup> , María Ángel García Chaves <sup>3,8,‡</sup> and Luís Fernando Barbisan <sup>2,\*</sup>

- <sup>1</sup> Department of Pathology, Botucatu Medical School, São Paulo State University (UNESP), Botucatu 18618-687, SP, Brazil; bartolomeuar@gmail.com (A.R.B.); guilherme.romualdo@unesp.br (G.R.R.)
  - <sup>2</sup> Department of Structural and Functional Biology, Biosciences Institute, São Paulo State University (UNESP), Botucatu 18618-689, SP, Brazil
  - <sup>3</sup> Biosanitary Research Institute of Granada (ibs.GRANADA), University Hospitals of Granada, University of Granada, 18012 Granada, Spain; carmen.grinan@genyo.es (C.G.L.); jmarchal@ugr.es (J.A.M.C.); mangelgarcia@ugr.es (M.Á.G.C.)
  - <sup>4</sup> GENYO (Centre for Genomics and Oncological Research), Pfizer/University of Granada/Andalusian Regional Government, 18016 Granada, Spain
  - <sup>5</sup> UGC de Oncología Médica, Complejo Hospitalario de Jaen, 23007 Jaen, Spain
  - <sup>6</sup> Department of Experimental Medicine, Sapienza University of Rome, 00185 Rome, Italy; zeinmersini.besharat@uniroma1.it
  - <sup>7</sup> Department of Human Anatomy and Embryology, School of Medicine, University of Granada, 18016 Granada, Spain
  - <sup>8</sup> Department of Biochemistry and Molecular Biology III and Immunology, University of Granada, 18016 Granada, Spain
- \* Correspondence: luis.barbisan@unesp.br  
† These authors contributed equally to this work.  
‡ These authors contributed equally to this work.



**Citation:** Bartolomeu, A.R.; Romualdo, G.R.; Lisón, C.G.; Besharat, Z.M.; Corrales, J.A.M.; Chaves, M.Á.G.; Barbisan, L.F. Caffeine and Chlorogenic Acid Combination Attenuate Early-Stage Chemically Induced Colon Carcinogenesis in Mice: Involvement of oncomiR miR-21a-5p. *Int. J. Mol. Sci.* **2022**, *23*, 6292. <https://doi.org/10.3390/ijms23116292>

Academic Editors: Nipin Sp, Dong Young Kang and Codruta Soica

Received: 29 April 2022

Accepted: 28 May 2022

Published: 4 June 2022

**Publisher's Note:** MDPI stays neutral with regard to jurisdictional claims in published maps and institutional affiliations.



**Copyright:** © 2022 by the authors. Licensee MDPI, Basel, Switzerland. This article is an open access article distributed under the terms and conditions of the Creative Commons Attribution (CC BY) license (<https://creativecommons.org/licenses/by/4.0/>).

**Abstract:** Colorectal cancer (CRC) is one of most common cancers worldwide, with high rates of mortality. Epidemiological findings demonstrate that coffee consumption reduces the risk of developing CRC by ~13%. In general, in vivo and in vitro findings demonstrate the antiproliferative, antioxidant and proapoptotic effects of brewed coffee or major bioavailable coffee compounds. Thus, it was assessed whether caffeine (CAF) and/or chlorogenic acid (CGA) attenuates the early-stage of chemically induced mouse colon carcinogenesis. Male Swiss mice were submitted to a 1,2-dimethylhydrazine/deoxycholic acid (DMH/DCA)-induced colon carcinogenesis model. These animals received CAF (50 mg/kg), CGA (25 mg/kg) or CAF+CGA (50 + 25 mg/kg) intragastrically for five times/week for ten weeks. CAF+CGA had the most pronounced effects on decreasing epithelial cell proliferation (Ki-67) and increasing apoptosis (cleaved caspase-3) in colonic crypts. This treatment also decreased the levels of proinflammatory cytokines IL-6, IL-17 and TNF- $\alpha$ , and downregulated the oncomiR miR-21a-5p in the colon. Accordingly, the analysis of miR-21a-5p targets demonstrated the genes involved in the negative regulation of proliferation and inflammation, and the positive regulation of apoptosis. Ultimately, CAF+CGA attenuated preneoplastic aberrant crypt foci (ACF) development. Our findings suggest that a combination of coffee compounds reduces early-stage colon carcinogenesis by the modulation of miR-21a-5p expression, highlighting the importance of coffee intake to prevent CRC.

**Keywords:** caffeine; chlorogenic acid; chemically induced colon carcinogenesis; miRNA expression; mice

## 1. Introduction

Colorectal cancer (CRC) is the third most common cancer and ranks second in worldwide mortality. More than 1.9 million new cases and 935 thousand deaths were estimated in 2020 [1,2]. In addition, cases/deaths are expected to rise by ~60% within the next 15 years [1,2]. Most CRC cases are classified as sporadic (55–85%), and more than half are related to environmental factors, such as the high consumption of processed red meat, alcoholism, smoking, a sedentary lifestyle and obesity [3–5]. The natural development of CRC is considered a multistep process that occurs in four main stages (initiation, promotion, progression and metastasis), that includes the emergence and accumulation of molecular and morphological alterations [6]. Most CRC cases arise from an adenoma–carcinoma multistep sequence, involving multiple epigenetic and genetic alterations, including aberrant microRNA (miRNA) expression [7]. Deregulated miRNA expression has been gaining relevance over the past few decades [8,9]. miRNAs are small non-coding RNAs that regulate gene expression by mRNA degradation or translational repression. These small molecules may act as oncogenes or tumor suppressors, and their differential expression is considered a hallmark of colon carcinogenesis [9,10]. While silencing or triggering different signaling pathways, the miRNAs may contribute to the transition from normal colonocytes to neoplastic stages. In particular, the miR-21a-5p is upregulated in both adenomas and adenocarcinomas, and the expression of this miRNA is positively correlated to disease staging, indicating a potential role of miR-21a-5p in the CRC development [10]. This oncomiR negatively regulates the tumor suppressor PDCD4 at the posttranscriptional level, via a specific target site within the 3'-UTR inducing invasion and metastasis in several CRC cell lines [10,11]. Moreover, miR-21 can inhibit apoptosis by altering anti-apoptotic Bcl-2, and gemcitabine-induced apoptosis is specifically inhibited by miR-21 via PTEN and PI3K pathway [11,12].

In order to understand the different aspects of colon tumorigenesis, chemically induced murine models were established, including those induced by 1,2-dimethylhydrazine (DMH) and its metabolite, azoxymethane (AOM) [13], especially when associated with promoting a stimulus using bile acids such as deoxycholic acid (DCA) [14]. These bioassays provided information on the morphological and molecular features comparable to the corresponding human diseases, enabling a translational screening of preventive and therapeutic strategies towards this malignancy [13,15]. Single or multiple doses of DMH/AOM induce preneoplastic lesions and tumors mainly in the middle and distal colon. Aberrant crypt foci (ACF), constituting of one or more aberrant crypts (AC), are considered the earliest endpoint lesions during colorectal carcinogenesis, classified as putative precursors for human and rodent CRC [16–18]. Thus, ACF detection and quantification have been proposed to identify potential preventive agents in chemically induced CRC bioassays [13,15].

Epidemiological and experimental findings strongly suggest that nutritional habits and lifestyle display key roles in CRC development, and interventions in these risk factors should be the primary prevention for this cancer [4,19]. Coffee consumption is based on the intake of brewed and espresso coffee beverages, prepared with beans that have been roasted and ground, originally from the *Coffea* genus plant species [20–22]. The higher annual rate of consumption per capita is concentrated in the northern hemisphere, especially in European countries (6.29–9.12 kg per capita), followed by the US (~4 kg per capita) then Asian and African countries (~3 kg per capita) [20–22]. Drinking coffee is generally considered a healthy habit [2]. Although evidence regarding the influence of drinking coffee on the risk of CRC is limited, some epidemiological studies clearly demonstrate a positive correlation between coffee consumption and a reduced risk of CRC or an improvement in the overall survival rate from cancer; however, other studies demonstrated no correlation in stimulating novel investigations [22–24]. Indeed, the protection or a reduction in the risk of the upper and lower digestive tract malignancies are associated with a mild and high intake of coffee beverages ( $\geq 3$  cups a day) [22]. Guercio et al. (2015) demonstrated a significant decrease in the recurrence of cancer and death in patients with stage III CRC who consumed four cups/day [25]. Recently, a prospective study involving 1171 patients

with advanced or metastatic CRC demonstrated that a high coffee consumption ( $\geq 3$  cups a day) improved the overall survival (OS) rates, reducing the therapeutic side effects and risk of cancer progression [26].

Coffee is considered a complex pharmacopeia, and the composition of its extract depends on many factors that vary from harvesting the seeds to serving it [27]. In terms of abundance, the main bioactive compound present in the beverage coffee is caffeine (CAF, 1,3,7-trimethylxanthine), followed by conjugated hydroxycinnamates commonly referred to as chlorogenic acid (CGA, caffeoylquinic acid). Other bioactive compounds in coffee beverages comprise amino acids, polysaccharides, and melanoidins [22,27,28]. Most of the literature is focused on the beneficial effects, as a whole, of coffee beverages or coffee compounds. Individual and mechanistical studies on the combination of the most abundant compounds against CRC are warranted. Given that coffee bioavailable compounds seem to modulate miRNA biosynthesis and downstream targets [29], it would be important to unveil whether coffee compounds could modify colon carcinogenesis by altering miRNA expression.

Thus, we assessed whether the administration of two of the main bioavailable coffee compounds (individually or combined) attenuates early-stage chemically induced colon carcinogenesis using a DMH/DCA mouse model. In addition, the global miRNA profile was evaluated in order to investigate the involvement of these molecules in the potential chemo preventive properties of coffee compounds. This is the first translational investigation regarding the combination of the two main bioactive compounds (CGA + CAF) against colon carcinogenesis and may provide novel mechanistic insights using doses that resemble human coffee consumption.

## 2. Results

### 2.1. General Findings during Bioactive Coffee Compounds Interventions

Firstly, the effect of coffee compounds on food consumption were analyzed. Body and liver weights from mice, submitted to the DMH/DCA-induced colon carcinogenesis, were taken. The animals exhibited similar initial body weights (Table 1). The DMH/DCA protocol and different interventions with bioactive coffee compounds did not alter food consumption, body weight gain or final body weight. Although interventions did not modify absolute liver weight, all groups submitted to the DMH/DCA protocol demonstrated a significant increase in relative liver weight (%) at the end of week 13 ( $p < 0.05$ ), and coffee compounds did not modify this DMH/DCA-induced effect (Table 1).

**Table 1.** Effects of coffee compounds on food consumption, body weight, relative and absolute liver weights in DMH/DCA-induced colon carcinogenesis.

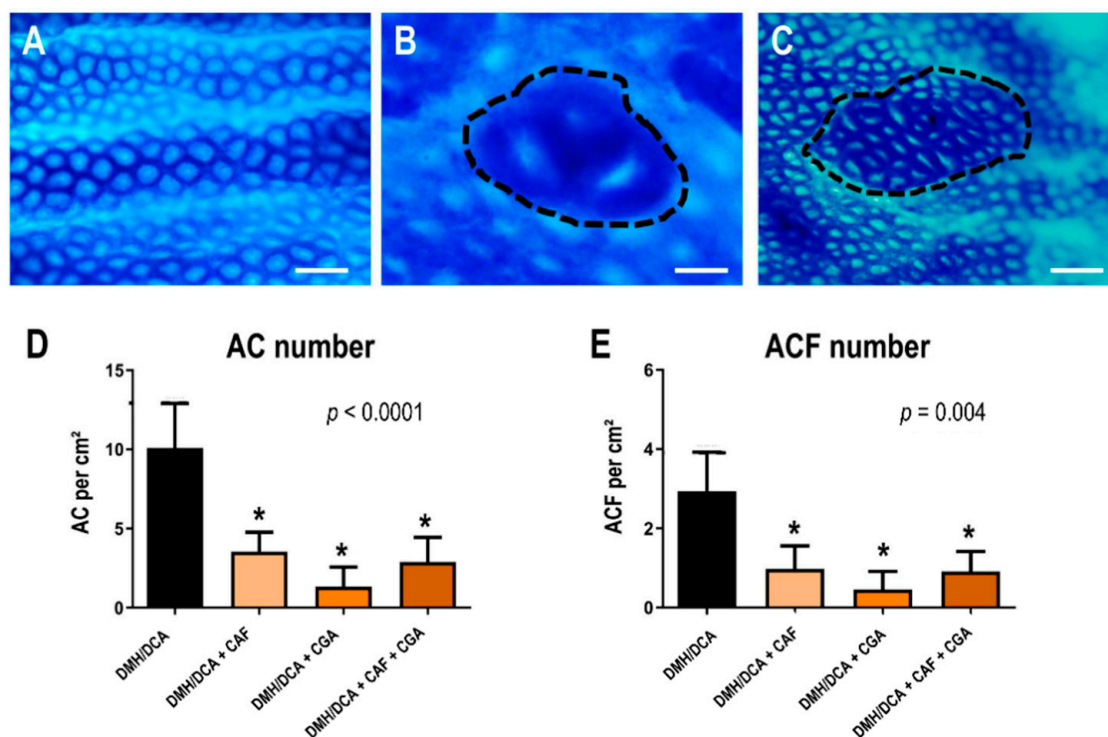
Groups/Treatments	Food Intake (g/mice/day)	Body Weight (g)			Absolute Liver Weight (g)	Relative Liver Weight (%)
		Initial	Final	Gain		
Untreated	6.19 ± 1.52	29.8 ± 2.5	40.3 ± 3.2	7.3 ± 3.6	2.0 ± 0.2	4.8 ± 0.4
DMH/DCA	5.69 ± 1.50	28.4 ± 1.6	37.1 ± 3.5	6.7 ± 4.2	2.4 ± 0.4	6.3 ± 1.0 *
DMH/DCA+CAF	5.57 ± 1.48	28.1 ± 2.8	36.8 ± 3.3	6.1 ± 4.4	2.8 ± 0.5	7.1 ± 1.5 *
DMH/DCA+CGA	5.72 ± 1.84	30.5 ± 2.8	37.0 ± 3.3	6.8 ± 4.3	2.5 ± 0.7	6.5 ± 0.8 *
DMH/DCA+CAF+CGA	5.61 ± 1.78	30.0 ± 1.6	38.4 ± 2.7	7.7 ± 3.9	2.3 ± 0.3	6.8 ± 0.6 *

$n = 10$  animals/group. Data are expressed as mean ± S.D. Untreated: EDTA vehicle (i.p.)/balanced diet. DMH/DCA = 1,2-dimethylhydrazine ( $2 \times 40$  mg/kg b.wt., i.p.)/deoxycholic acid supplemented diet (0.02% w/w, 10 weeks). CAF = caffeine (50 mg/kg b.wt. intragastrical), CGA = chlorogenic acid (25 mg/kg b.wt. intragastrical) and CAF+CGA = caffeine + chlorogenic acid (50 and 25 mg/kg b.wt. intragastrical) for 10 weeks. \* Statistical differences compared to the untreated group using ANOVA and Tukey's test ( $p < 0.05$ ).

### 2.2. Analysis of Colonic Preneoplastic AC and ACF

After a whole-mount colonic mucosa analysis, all groups that received coffee compound interventions similarly demonstrated a significant reduction in the mean number of AC and ACF ( $p < 0.0001$  and  $p = 0.004$ , respectively) per area of colon mucosa analyzed when

compared to the DMH/DCA counterpart (Figure 1). Representative photomicrographs of ACF stained by methylene blue, as shown in Figure 1.

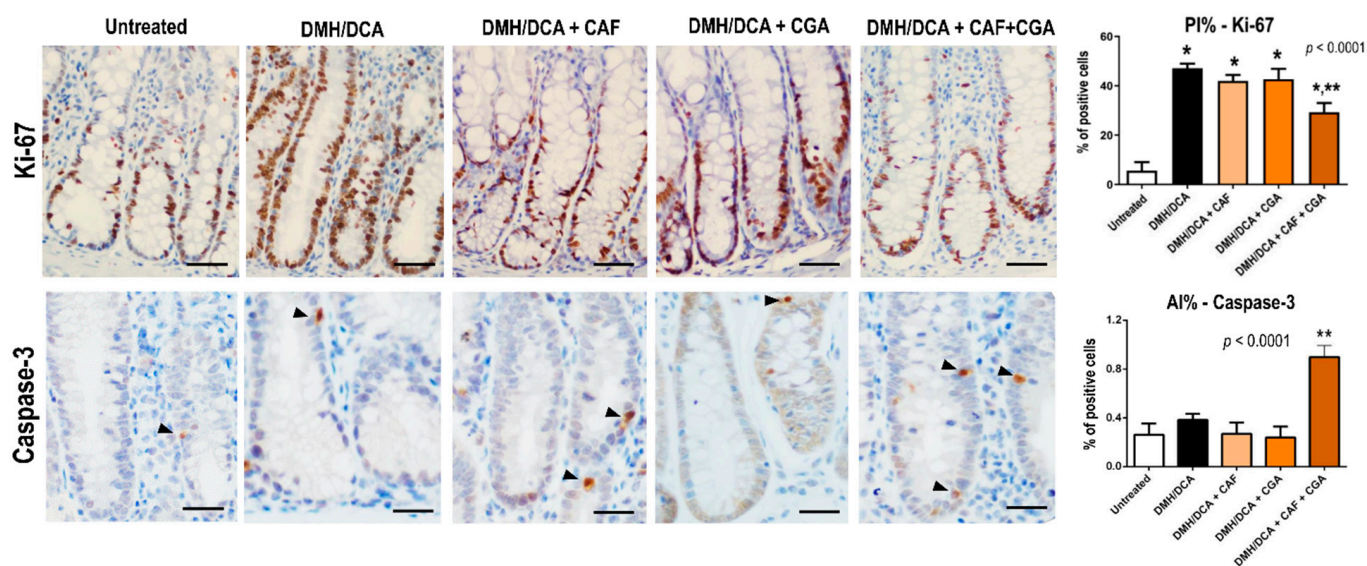


**Figure 1.** Representative methylene blue-stained colonic epithelium, showing (A) normal colon epithelium (scale bar: 100  $\mu\text{m}$ , untreated group), (B) aberrant crypt foci with three crypts (scale bar: 50  $\mu\text{m}$ , dotted line) and (C) aberrant crypt foci with >20 aberrant crypts (scale bar: 100  $\mu\text{m}$ , dotted line). Effects of coffee compounds on the development of (D) AC or (E) ACF during DMH/DCA-induced colon carcinogenesis.  $n = 10$  animals/group. Data are expressed as mean  $\pm$  S.D. Untreated: 2 $\times$ EDTA vehicle (i.p.)/balanced diet. DMH/DCA = 1,2-dimethylhydrazine (2  $\times$  40 mg/kg b.wt., i.p.)/deoxycholic acid supplemented diet (0.02% *w/w*, 10 weeks). CAF = caffeine (50 mg/kg b.wt. intragastrical), CGA = chlorogenic acid (25 mg/kg b.wt. intragastrical) and CAF+CGA = caffeine + chlorogenic acid (50 and 25 mg/kg b.wt. intragastrical) for 10 weeks. \* Statistical differences compared to the untreated group using ANOVA and Tukey's test ( $p < 0.05$ ).

### 2.3. Proliferation and Apoptosis Indexes in Colonic Crypts

After a colonic epithelium analysis, all groups submitted to the DMH/DCA-induced mouse model demonstrated an increase in cell proliferation in colonocytes compared with the untreated counterpart ( $p < 0.0001$ ) measured by immunoreactivity for Ki-67. CAF or CGA interventions individually did not change this DMH/DCA-mediated effect on colonocyte proliferation. However, only the CAF+CGA intervention significantly reduced colonocyte proliferation in normal-appearing crypts compared to the DMH/DCA counterpart ( $p < 0.0001$ ) (Figure 2). Moreover, only the CAF+CGA intervention significantly increased ( $p < 0.0001$ ) the percentage of apoptotic colonocytes in the crypts, measured by immunoreactivity for cleaved-caspase 3 (Figure 2).





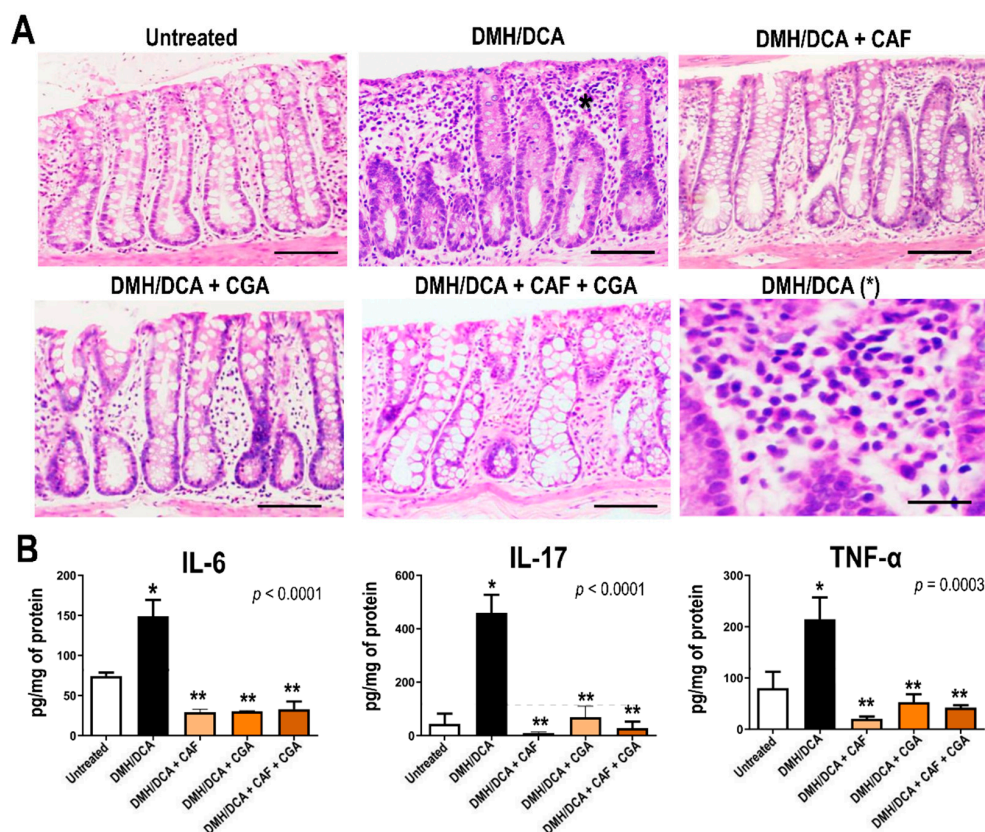
**Figure 2.** Effects of coffee compounds on colonic proliferation (PI%) and apoptosis indexes (AI%) during DMH/DCA-induced colon carcinogenesis.  $n = 10$  animals/group. Data are expressed as mean  $\pm$  S.D. Representative photomicrographs of Ki-67-positive colonocytes (scale bar: 50  $\mu$ m) and cleaved caspase-3-positive apoptotic bodies (scale bar: 25  $\mu$ m, arrowheads) are also displayed. Untreated: 2  $\times$  EDTA vehicle (i.p.)/balanced diet. DMH/DCA = 2  $\times$  1,2-dimethylhydrazine (40 mg/kg b.wt., i.p.)/deoxycholic acid supplemented diet (0.02% *w/w*, 10 weeks). CAF = caffeine (50 mg/kg b.wt. intragastrical), CGA = chlorogenic acid (25 mg/kg b.wt. intragastrical) and CAF+CGA = caffeine + chlorogenic acid (50 and 25 mg/kg b.wt. intragastrical) for 10 weeks. Asterisks correspond to statistical differences compared to the untreated (\*) or DMH/DCA (\*\*) counterparts using ANOVA and Tukey test ( $p < 0.05$ ).

#### 2.4. Proinflammatory Cytokines Analysis

The histological analysis showed that the DMH/DCA group presented more inflammatory infiltrate of lymphocytes, plasma cells and neutrophils in the lamina propria compared to the untreated counterpart. In addition, this colonic low-grade inflammation induced by DCA treatment was reduced by treatments with isolated or combined bioactive coffee compounds in comparison with the DMH/DCA counterpart (Figure 3). In concordance with histological findings, the colonic cytokines analysis demonstrated that the DMH/DCA group notably increased colonic levels of IL-6 ( $p < 0.0001$ ), IL-17 ( $p < 0.0001$ ) and TNF- $\alpha$  ( $p = 0.0003$ ) compared to the untreated counterpart, showing the activation of pro-inflammatory axis (Figure 3). In contrast, treatments with isolated or combined bioactive coffee compounds similarly reduced the expression of IL-6, IL-17 and TNF- $\alpha$  in comparison with the DMH/DCA counterpart (Figure 3).

#### 2.5. Global miRNA Expression

The DMH/DCA model showed the upregulation of six miRNAs and the downregulation of four miRNAs in the colon (Table 2, Figure 4A), including the upregulation of the oncomiR miR-21a-5p, that featured the highest FC compared to the untreated counterparts. As CAF+CGA intervention demonstrated the most pronounced effects on reducing ACF development and colonic cytokine levels (as observed similarly in CAF and CGA treatments), while increasing crypt apoptosis, and decreasing crypt proliferation (exclusive to this group); it was evaluated whether this treatment modulated DMH/DCA-induced effect on colonic miRNA expression. CAF+CGA intervention significantly increased the expression of two miRNAs, while it downregulated four miRNAs compared to the DMH/DCA group (Table 2, Figure 4A). Of those miRNAs differentially expressed in our model, CAF+CGA decreased the expression of the oncomiR miR-21a-5p, as depicted in the Venn diagram (Figure 4A).

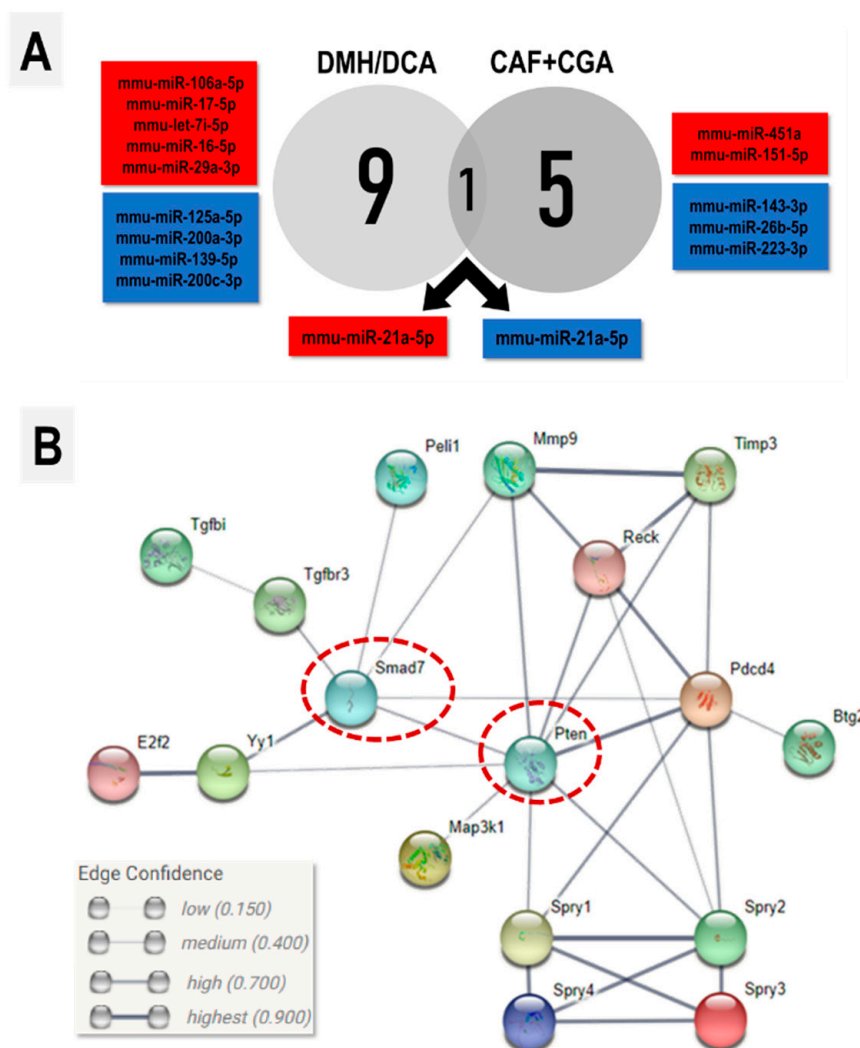


**Figure 3.** (A) Representative photomicrographs of HE-stained sections of colonic crypts (scale bar: 100  $\mu$ m). \* Detail on the inflammatory infiltrate present in the lamina propria of DMH/DCA group (scale bar: 20  $\mu$ m). (B) Effects of coffee compounds on colonic levels of interleukins 6 (IL-6), 17 (IL-17) and the tumor necrosis factor alpha (TNF- $\alpha$ ) during DMH/DCA-induced colon carcinogenesis.  $n = 7$  animals/group. Data are expressed as mean  $\pm$  S.D. Untreated: 2  $\times$  EDTA vehicle (i.p.)/balanced diet. DMH/DCA = 2  $\times$  1,2-dimethylhydrazine (40 mg/kg b.wt., i.p.)/deoxycholic acid supplemented diet (0.02%  $w/w$ , 10 weeks). CAF = caffeine (50 mg/kg b.wt. intragastrical), CGA = chlorogenic acid (25 mg/kg b.wt. intragastrical) and CAF+CGA = caffeine + chlorogenic acid (50 and 25 mg/kg b.wt. intragastrical) for 10 weeks. Asterisks correspond to statistical differences compared to the untreated (\*) or DMH/DCA (\*\*) counterparts using ANOVA and Tukey's test ( $p < 0.05$ ).

**Table 2.** miRNAs modulated in the DMH/DCA model and in CAF+CGA intervention group.

DMH/DCA vs. Untreated			DMH/DCA+CAF+CGA vs. DMH/DCA		
miRNA	Log2 (FC)	$p$ Value	miRNA	Log2 (FC)	$p$ Value
mmu-miR-21a-5p	2.32	0.03	mmu-miR-451a	2.09	0.001
mmu-miR-106a-5p	1.73	0.001	mmu-miR-151-5p	1.17	0.03
mmu-miR-17-5p	1.73	0.001	mmu-miR-21a-5p	-2.06	0.03
mmu-let-7i-5p	1.53	0.02	mmu-miR-143-3p	-1.58	0.04
mmu-miR-16-5p	1.42	0.009	mmu-miR-26b-5p	-1.51	0.04
mmu-miR-29a-3p	1.34	0.04	mmu-miR-223-3p	-1.45	0.02
mmu-miR-125a-5p	-1.65	0.01			
mmu-miR-200a-3p	-1.39	0.01			
mmu-miR-139-5p	-1.36	0.02			
mmu-miR-200c-3p	-1.29	0.01			

Considering Fold Change (FC) ( $>1.5$ ) and  $p \leq 0.05$ ; Untreated: 2  $\times$  EDTA vehicle (i.p.)/balanced diet. DMH/DCA = 2  $\times$  1,2-dimethylhydrazine (40 mg/kg b.wt., i.p.)/deoxycholic acid supplemented diet (0.02%  $w/w$ , 10 weeks). CAF = caffeine (50 mg/kg b.wt. intragastrical), CGA = chlorogenic acid (25 mg/kg b.wt. intragastrical) and CAF+CGA = caffeine + chlorogenic acid (50 and 25 mg/kg b.wt. intragastrical) for 10 weeks.



**Figure 4.** (A) The Venn diagram depicting the differentially expressed miRNAs (red: upregulated; blue: downregulated) in DMH/DCA (vs. untreated group) and CAF+CGA (vs. DMH/DCA). (B) STRING confidence network analysis of miR-21a-5p validated targets. Nodes in the correlated proteins are shown (with 3D structure inside). Edges correspond to the confidence of functional correlation (caption). DMH/DCA and CAF+CGA shared the differential expression of oncomiR miR-21a-5p, which was upregulated in the DMH/DCA group and downregulated in CAF+CGA intervention. DMH/DCA = 2 × 1,2-dimethylhydrazine (40 mg/kg b.wt., i.p.)/deoxycholic acid supplemented diet (0.02% w/w, 10 weeks). CAF = caffeine (50 mg/kg b.wt. intragastrical), CGA = chlorogenic acid (25 mg/kg b.wt. intragastrical) and CAF+CGA = caffeine + chlorogenic acid (50 and 25 mg/kg b.wt. intragastrical) for 10 weeks.

#### 2.6. Analysis miR-21a-5p Target Genes and Network/Functional Correlation

Considering that miR-21a-5p was downregulated by CAF+CGA treatment, target analysis of this miRNA revealed 35 experimentally validated proteins (Table S1). Pathway analysis showed that most of these targets are involved with the “negative regulation of ERK1 and ERK2 cascade”, “negative regulation of TGF- $\beta$  receptor signaling pathway”, and “positive regulation of apoptotic process” (Table 3). In keeping with these findings, Phosphatase and tensin homolog (Pten) and mothers against decapentaplegic homolog 7 (Smad7) were as central nodes in the target network analysis (Figure 4B), as proteins directly involved with the modulated biological processes.



**Table 3.** Biological processes correlated to the validated targets of miR-21a-5p.

Biological Processes	Targets (% of Total)	Target Names	p Value
Negative regulation of ERK1 and ERK2 cascade	6 (18.8%)	Pten, Sprv1, Sprv2, Sprv3, Sprv4, Timp3	$1.8 \times 10^{-7}$
Negative regulation of epithelial to mesenchymal transition	4 (12.5%)	Pten, Sprv1, Sprv2, Tgfbr3	$2.0 \times 10^{-5}$
Regulation of signal transduction	4 (12.5%)	Sprv1, Sprv2, Sprv3, Sprv4	$7.5 \times 10^{-5}$
Negative regulation of TGF- $\beta$ receptor signaling pathway	4 (12.5%)	Smad7, Sprv1, Sprv2, Tgfbr3	$1.9 \times 10^{-4}$
Positive regulation of apoptotic process	6 (18.8%)	Fasl, Mmp9, Map3k1, Moap1, Pten, Sprv1	$2.6 \times 10^{-4}$

### 3. Discussion

This study aimed at evaluating the beneficial effects of the main coffee alkaloids and polyphenols, CAF and CGA, individually or in association, in a well-established chemically induced colon carcinogenesis bioassay [13,30]. The underlying importance of miRNA modulation was also assessed on the chemopreventive effect of coffee compounds. As elicited in a recent prospective study demonstrating that high coffee consumption ( $\geq 3$  cups a day) improved the OS of CRC patients [26], further mechanistic studies are needed in order to discriminate which bioactive compounds are involved in this protective effect, and whether these bioactive molecules interact with each other [29]. Our findings may contribute to this gap in the literature, as CAF+CGA intervention had the most pronounced effects on decreasing epithelial cell proliferation (Ki-67) and increasing apoptosis in colonic crypts. This treatment also decreased the levels of proinflammatory cytokines IL-6, IL-17 and TNF- $\alpha$ , and downregulated the oncomiR miR-21a-5p in the colon. Ultimately, CAF+CGA attenuated preneoplastic ACF development. Note that our coffee compound intervention followed a human equivalent dose (HED) translational approach, equivalent to the CAF and ACG contained in three cups of coffee (high coffee consumption).

Previous studies reported that direct contact of colonic mucosa with bioactive coffee compounds, mainly CGA, generate metabolites due to the microbiota metabolization, harboring, in situ, several microbial metabolites in amounts higher or similar to those utilized in the in vitro assays, also reaching extremely low peak plasma concentrations [31,32]. CAF is quickly and practically absorbed entirely in the gastrointestinal tract within 45 min, the smallest part in the upper ( $\sim 20\%$ ) and the largest part ( $\sim 80\%$ ) in the lower gastrointestinal tract, where it is sufficiently hydrophilic to cross biological membranes, reaching the liver, where a biotransformation occurs through the cytochrome P450 (CYP) enzymes, generating metabolites (paraxanthine, dimethylxanthine and theobromine). These metabolites are immediately bioavailable, reaching a plasma peak of  $\sim 33 \mu\text{M}$  within 60–80 min after the higher consumption, equivalent to the intake of three cups/day ( $\sim 350 \text{ mL}$ ) of common filtered coffee [33,34]. According to Christopher et al. (2021), the increase in coffee consumption ( $\geq 3$  cups/day) is inversely proportional to the progression of cancer in patients with advanced or metastatic CRC [35]. Interestingly, this same study observed that when caffeinated and decaffeinated coffee were considered separately, both improved the overall survival; however, the caffeinated coffee presented lower effectiveness on progression-free survival, reinforcing the need for further approaches to identify how these bioactive molecules interact [35].

In our chemically induced mouse model, DMH is a procarcinogen that is biotransformed in the liver into highly reactive ions that alkylate specific genomic DNA bases, resulting in specific DNA adducts, such as O<sup>6</sup>-methylguanine (O<sup>6</sup>-mG) and N<sup>7</sup>-methylguanine (N<sup>7</sup>-mG) in colonic epithelial cells. These DNA adducts can lead to genomic instabil-



ity and mutation in cancer, a hallmark that significantly contributes to the initiation of rodent colon carcinogenesis [13,36]. In addition to DMH administration, dietary DCA was used to promote the early-stage colon carcinogenesis. Secondary biliary acids are known to contribute to the inflammatory milieu that promotes (pre)neoplastic lesions by different mechanisms, including NLRP3 inflammasome activation that leads to cytokine production [37]. As such, a clear inflammatory colonic context was found in a DMH/DCA model, as IL-6, IL-17 and TNF- $\alpha$  were substantially increased in this group. Although the mechanisms are not fully understood, DCA is also proposed to induce colonic tumors in mice, as a 0.2% DCA in a diet for 8–10 months, without carcinogen initiation, and that led to development of colonic neoplasia [14]. These DMH/DCA-related mechanisms are proposed to induce (pre)neoplastic colon lesions, including ACF, considered putative pre-neoplastic lesions. The appearance of ACF in both humans and rodents are thought to be the earliest identifiable tumor precursor lesions [16–18,30]. The progression of conventional and dysplastic ACF into adenomas and, consequently, into CRC is associated with the accumulation of several genetic and epigenetic changes [15,16]. However, only a small fraction of ACF evolve into an adenoma–carcinoma sequence. Early screening of these lesions is well accepted in short/medium term rodent bioassays as an early marker for CRC prevention [13,15,30]. Indeed, it was found that coffee compounds individually or in combination similarly decreased ACF development. Our findings are in keeping previous bioassays demonstrating that caffeinated coffee [38], CAF [39] or CGA [40] individually attenuated the development of ACF or dysplastic crypts during the initial stages of different chemically induced colon carcinogenesis models in rodents. Nonetheless, the landscape of potential molecular mechanisms involved was not investigated, in detail, in these studies.

It was found that a CAF+CGA combination counteracted the DMH/DCA-induced upregulation of miR-21a-5p, reducing the expression of this oncomiR in the colon. In humans, miR-21-5p is also overexpressed in a colon tumor compared with normal adjacent tissue, and its expression is positively correlated to CRC staging [41,42]. Our DMH/DCA-induced model reflected this marked molecular hallmark of colon carcinogenesis. Increased expression of miR-21-5p in CRC is also associated to a poor prognosis, including poor differentiation, lymph node metastasis and advanced TNM [42]. This miRNA negatively regulates the target gene *Pcdc4*, resulting in increased invasion, migration and cell proliferation of different human CRC cell lines (HT-29, Colo206f, LIM 1863, SW480 and DLD1), contrasting with a knockdown of miR-21-5p cells [43,44]. In addition, it is recognized that tumor suppressor PTEN is inversely associated with miR-21-5p levels in CRC tissues and the HCT-116 colon cancer cell line. When these cells were transfected with miR-21-5p inhibitor, proliferation and migration were suppressed while PTEN protein levels were increased [39]. These findings elicit that miR-21-5p targets tumor suppressor PTEN at the post-transcriptional level, attenuating the PTEN/PI3K/Akt signaling pathway, which is involved in the negative regulation of proliferation and the positive regulation of apoptosis [45].

Our target analysis of this miRNA also revealed that *Pten* is a validated target in mice. Moreover, it was found that ~13–20% of miR-21a-5p targets are involved in the (A) negative regulation of ERK1 and ERK2 cascade—closely involved with cell proliferation—and (B) positive regulation of apoptosis. Note that both BP annotations included *Pten*, which was also a central node in the network analysis, demonstrating the importance of miR-21a-5p/*Pten* axis on the regulation of colon proliferation/apoptosis. In accordance with the downregulation of miR-21a-5p, CAF+CGA was the only treatment displaying a reduced Ki-67 labeling indexes on colonocytes and increased the percentage of colonocytes in apoptosis. Cell proliferation is closely related to (pre)neoplastic lesion development, as its increase may promote a clonal expansion of DMH-initiated epithelial cells, and ultimately promote ACF development [46,47]. Furthermore, the ability to induce apoptosis in DMH-initiated epithelial cells may also prevent the emergence of (pre)neoplastic lesions [42]. As such, the modulation of crypt proliferation/apoptosis by coffee compounds may be involved with miR-21a-5p decrease, resulting in a decreased ACF burden.

DCA is a naturally occurring secondary bile acid that presents potential pro-carcinogenic and pro-inflammatory actions [14,48]. Some animal studies have demonstrated that mice receiving a DCA-supplemented diet developed gut dysbiosis and intestinal inflammation [48,49]. Our findings indicate that CAF+CGA intervention reduced the expression of pro-inflammatory cytokines IL-6, IL-17 and TNF- $\alpha$  in the colon. Note that Smad7, a negative regulator of pro-inflammatory TGF- $\beta$  signaling, is a target of miR-21a-5p. When active, TGF- $\beta$  signaling drives the pro-inflammatory shift of many stromal cells involved in the (pre)neoplastic lesion microenvironment [50]. The connection between inflammation and colon carcinogenesis is well established. The infiltration of CD8+ and CD3+ cells and other immune cell subsets in CRC have been associated with clinical prognoses and outcomes [51,52]. IL-6 is overexpressed in CRC patients and is correlated with a larger tumor size, the occurrence of liver metastasis and reduced survival rates, as this interleukin is also a potent stimulator of colon cancer cell proliferation [53–55]. The TNF- $\alpha$  is expressed initially in the first steps of inflammation, this cytokine is responsible for triggering many reactions, including the production of other cytokines, chemokines and endothelial adhesion molecules, besides increasing vascular permeability and recruiting immune cells to the site of infection [56–59]. Finally, the IL-17 is also expressed significantly higher in CRC tissues, and its upregulation begins in the adenoma stage and is at a higher level in the malignant stage. IL-17 promotes tumorigenesis through the production of myeloid-derived suppressor cells (MDSCs) and stimulates IL-6 secretion from stromal tumor cells activating the STAT3 pathway [59]. TNF- $\alpha$  and IL-17 presented a synergistic effect on the proliferation of HT-29 cells through stimulating the extracellular receptors of Kinase (ERK1/2) and increasing IL-17 downstream genes, such as MMP-9, MMP-7 and MMP-2 [60]. As such, it was suggested that the negative regulation of colonic mucosa inflammation by coffee compounds may be involved with a decrease in miR-21a-5p, also contributing to the decreased ACF burden.

#### 4. Conclusions

The findings from our preclinical study indicate that the association of the most common bioactive compounds found in coffee beverages (CAF+CGA) attenuate early-stage colon carcinogenesis in a chemically induced model. These beneficial effects are probably mediated by the downregulation of an important oncomiR, thus modulating proliferation, apoptosis and inflammation. Our findings provide insights into which coffee compounds are involved on the recent reported protective effects of coffee intake on CRC outcomes in humans [26,29], and may inspire future clinical studies.

#### 5. Materials and Methods

##### 5.1. Experimental Design

Seven-week-old male Swiss Webster mice were randomly distributed into five experimental groups ( $n = 10$ /group) and submitted to a colon carcinogenesis model. In brief, mice were initiated for colon carcinogenesis by receiving one intraperitoneal (i.p.) injection of DMH per week [40 mg/kg body weight (b.wt.) in EDTA 0.0001 M; Merck KGaA, Darmstadt, Germany] for two weeks (weeks 1 and 2) [61]. To promote colon carcinogenesis after DMH initiation, the animals received a balanced diet supplemented with deoxycholic acid (DCA) at 0.02% (Merck KGaA, Darmstadt, Germany) for 10 weeks (weeks 3 to 13). Control mice received a DMH vehicle and non-supplemented balanced diet. Concomitantly to DCA intervention, mice received CAF (50 mg/kg b.wt./day), CGA (25 mg/kg b.wt./day), CAF+CGA (50 and 25 mg/kg b.wt./day, respectively) or just distilled water as a vehicle (intragastrically, five times a week) (8–10 am) for 10 weeks (Figure 5). The bioactive coffee compounds were diluted daily in distilled water. All mice were euthanized by exsanguination under ketamine/xylazine anesthesia (100/16 mg/kg b.wt. i.p.) at week 13. At necropsy, the liver was removed, weighted in order to evaluate absolute (g) relative (%) liver weights. The large intestine was removed and opened longitudinally and after a rapid macroscopic analysis, proximal, medial and distal parts were fixed in 10% formalin

solution during 24 h for posterior histological and immunohistochemistry assays. A sample of the distal part (2 cm) was aseptically processed for molecular analysis, snapped frozen in liquid nitrogen, and stored at  $-80^{\circ}\text{C}$ .

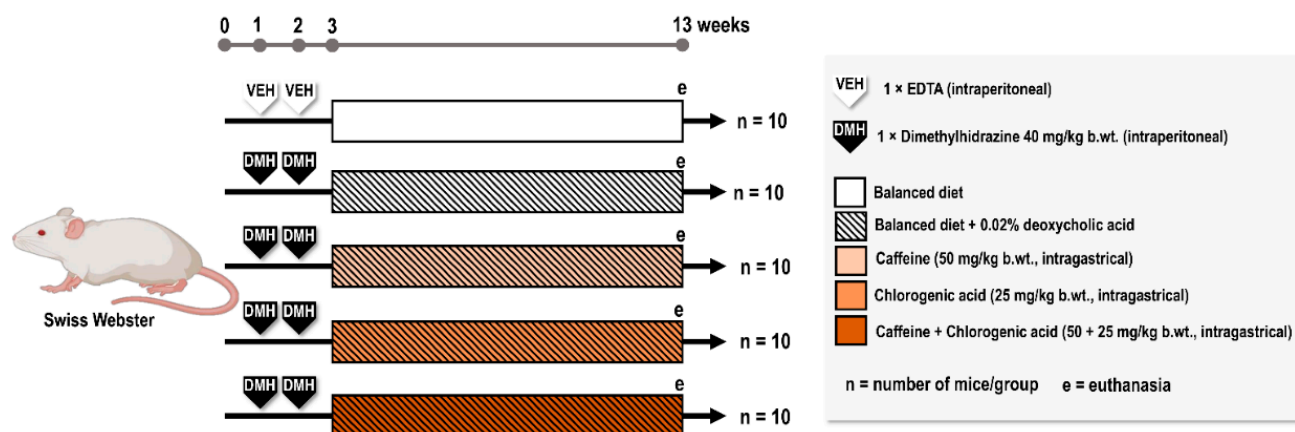


Figure 5. Experimental design.

All animals were obtained from ANILAB—Laboratory of Animals, Paulínia, São Paulo State, Brazil. Mice were kept in a room with continuous ventilation (16–18 air changes/h), relative humidity (45–65%), controlled temperature (20–24 °C) and a light/dark cycle of 12:12 h and were given water and a balanced diet (Nuvital, Quimtia, Colombo, Brazil) ad libitum. Body weight and food consumption were recorded once a week during the whole experiment. These protocols were approved by the Botucatu Medical School/UNESP Ethics Committee on the Use of Animals (CEUA) (Protocol number 1254/2017) and all animals received human care according to the criteria outlined in the “Guide for the Care and Use of Laboratory Animals” [62].

### 5.2. Dose Determination of Bioactive Coffee Compounds

High coffee consumption (~3 cups/day) leads to a ~13% to 37% lower risk of gastrointestinal cancer in humans [63,64]. Three cups/day is equivalent to a CAF intake of 200–300 mg/day (~2.8–4.0 mg/kg b.wt./day, considering a 70 kg person). The CAF (50 mg/kg b.wt./day) dose was calculated based on the allometric translation of the Human Equivalent Dose (HED) [65]. CGA dose (25 mg/kg b.wt.) was based in the CAF+CGA proportion in filtered coffee beverages (1:2). The intragastric administration (i.g.) of coffee compounds in mice, from seven weeks old (sexual maturity), simulates the human exposure to the coffee/CAF, where consumption begins from puberty through to the adult age [66]. The selected doses did not show toxic effects in rodents [22].

### 5.3. ACF Topographic Identification and Quantification

For ACF screening development (n = 10 animals/group), a classical preneoplastic colonic lesion [30] was made, the colon was removed, opened longitudinally, washed with distilled water, and measured (length, in cm). Samples of colon were fixed flat in 10% phosphate-buffered formalin solution for 24 h, then stored in ethanol 70%. Each colon sample was stained with 2% of methylene blue for 2 min, placed onto histological slides and then observed under conventional bright-field microscopy (Axiostar Plus, Zeiss, Oberkochen, Germany) at 20× magnification. For an ACF analysis, samples of proximal, medial and distal colonic mucosa were evaluated using well-established criteria [30]. Total number of ACF (mean per mice/group) and aberrant crypt (AC) (mean per mice/group) were calculated for each group. Moreover, considering those ACF that were  $\geq 2$  AC, the mean number of ACF or AC per colon length analyzed was calculated.

### 5.4. Colonic Proliferation and Apoptosis Indexes

After ACF screening, colon samples were swiss-rolled and embedded in paraffin, sections were obtained and stained with haematoxylin-eosin (HE).

Immunostaining for Ki-67 (ab16667, 1:100, Abcam, UK) and cleaved caspase-3 (ab179817, 1:200, Abcam, Cambridge, UK) were conducted using specific primary antibodies. Five-micrometer sections of colon samples were deparaffinized and hydrated through xylene-alcohol-water graded series. Slides were submitted to antigen retrieval in 0.1 M citrate buffer in a pressure chamber (Dako Cytomation, Glostrup, Denmark), incubated with 3% hydrogen peroxide solution (10 min), and treated with skimmed milk (1 h). Slides were incubated with primary antibodies 4 °C overnight. The sections were washed with phosphate buffer saline (PBS) solution and incubated with biotinylated universal polymer (Erviagas, Indaiatuba, SP, Brazil) for 20 min. In order to stain the immunocomplexes, slides were incubated with 3',3'-diaminobenzidine (DAB) chromogen solution (Sigma-Aldrich, St. Louis, MO, USA). Finally, the sections were counterstained with Harris' hematoxylin. Immunostained sections were evaluated in conventional light microscopy (Olympus BX53, Tokyo, Japan). The proliferation and apoptosis indexes (PI% and AI%) were calculated in 20 randomly selected colonic crypts by dividing the number of Ki-67 or caspase-3 positive cells per total number of cells analyzed ( $n = 10$  animals/group) [67].

#### 5.4. Enzyme-Linked Immunosorbent Assay (ELISA)

Around 100 mg of colon samples ( $n = 7$  animals/group) was homogenized in RIPA buffer (Cell Signaling, Danvers, MA, USA) containing 1% protease inhibitor cocktail (Sigma-Aldrich, USA), the proportion was 100  $\mu$ L buffer for each 30 mg tissue, then maintained at 4 °C for 2 h. The homogenate content (tissue/buffer) was centrifuged (10,000 $\times g$ , 4 °C, 30 min) and the supernatant was collected for the protein quantification using the Bradford method. Levels of tumor necrosis alpha (TNF- $\alpha$ ), interleukin-17 (IL-17) and -6 (IL-6) were obtained by the Luminex multiple analyte profiling (xMAP) methodology using a 96-well plate with specific magnetic beads for each cytokine, based on the manufacturer's instructions (MCYTOMAG-70 K, Millipore, Burlington, MA, USA).

#### 5.5. RNA Isolation and miRNA Profiling

About 30 mg of colon samples ( $n = 5$  animals/selected groups) were homogenized in 1 mL of QIAzol (Qiagen, Manchester, UK). Total RNA was isolated in each one using a QIAGEN RNeasy column-based system according to the manufacturer's instructions (Qiagen, Hilden, Germany). The RNA quantification was assessed in a Qubit 2.0 fluorometer and its integrity was observed in Agilent 2100 Bioanalyzer platform (Agilent Technologies, Santa Clara, USA). Only samples with RNA integrity number (RIN)  $\geq 7.0$  were considered for the miRNA expression. The RNA samples were stored until the analysis at  $-80$  °C.

A total of 100 ng of whole RNA was utilized for nCounter Mouse v1.5 miRNA global expression assay (efficient in detection of 600 murine and murine-related viral miRNAs, Supplementary Data S1) in an automated system (NanoString Technologies, Seattle, WA, USA). These analyses were carried out at the Molecular Oncology Research Center in the Barretos Cancer Hospital (Barretos, Brazil). The NanoString methodology consists in the incubation of total RNA samples with specific probes that bind 3' ends of each mature miRNA normalizing the miRNA melting temperature. The tag excess was removed, the complexes that formed RNA-tags were incubated with 10  $\mu$ L and 5  $\mu$ L of reporter and capture probes, at 64 °C during 18 h. There were specific fluorescent signals for each complex in miRNA at the 5' end, and capture probes are biotinylated at the 3' end. Post purification, the mixture was pipetted in a streptavidin-covered cartridge by nCounter Prep Station. Finally, cartridges were analyzed in nCounter Digital Analyzer, acquiring 280 fields of view per sample and the miRNA-reporter probe complexes were counted. miRNA expression was analyzed by raw counting the miRNA-reporter probe complexes that had been normalized using the median of the top 100 miRNAs and that presented the lowest coefficient of variation (low CV values) using the NanoString package. A pair of



comparisons were made considering  $p \leq 0.05$ , a fold change (FC)  $> 1.5$  and presented as log<sub>2</sub> (FC). Commonly/differentially expressed miRNAs were evaluated using a Venn Diagram.

### 5.6. In Silico Analysis of miRNA Targets and Pathways

After the analysis of differentially modulated miRNAs, each miRNA was identified and classified on microT-CDS (v5.0), DIANA tools and mirPath v.3 (<http://snf-515788.vmi.okeanos.grnet.gr/>; (accessed on 10 July 2019)). The output list of validated targets was submitted to the analysis of the functional enrichment of biological processes (BP) in the DAVID Bioinformatics Resource 6.8 online Platform (<https://david.ncifcrf.gov/>; (accessed on 10 July 2019)) [68]. Principal BP observations were organized by the high significance and lowest adjusted  $p$  values, considering  $p < 0.05$ . A network confidence analysis of the miRNA targets was carried out using the STRING database (<https://string-db.org/>; (accessed on 10 July 2019)).

### 5.7. Statistical Analysis

Data were analyzed using one-way ANOVA or Kruskal–Wallis and *post hoc* Tukey's test and presented as mean  $\pm$  standard deviation (SD). The number of samples per group for each analysis is represented by  $n$ . Statistical analysis was performed using GraphPad Prism Software 8.0 (GraphPad, San Diego, CA, USA), and differences were considered significant when  $p \leq 0.05$ .

**Supplementary Materials:** The following supporting information can be downloaded at: <https://www.mdpi.com/article/10.3390/ijms23116292/s1>.

**Author Contributions:** L.F.B., G.R.R. and A.R.B., conceptualization, methodology, writing—reviewing and editing; M.Á.G.C., C.G.L., Z.M.B. and J.A.M.C., analysis and interpretation, writing—reviewing and editing. All authors have read and agreed to the published version of the manuscript.

**Funding:** Ariane Rocha Bartolomeu received fellowships from the CAPES- Finance code 001 and São Paulo Research Foundation (FAPESP, #2017/26217-7). Guilherme R. Romualdo was the recipient of the fellowship FAPESP (#2016/12015-0). Luis Fernando Barbisan was the recipient of a grant from FAPESP (grant #2016/14420-0). The funders had no influence on the writing and interpretation of the data. Carmen G. Lison. was funded by Junta de Andalucía, Consejería de Salud y Familias (RH-0139-2020).

**Institutional Review Board Statement:** This animal study was approved by the institution's Ethics Review Board (CEUA-1254/2017).

**Informed Consent Statement:** Not applicable.

**Data Availability Statement:** Data are available in this manuscript or from authors upon reasonable request.

**Acknowledgments:** The authors would like to thank the Fundação de Amparo à Pesquisa do Estado de São Paulo (FAPESP) for the financial support.

**Conflicts of Interest:** The authors report no conflict of interest.

## References

1. Sung, H.; Ferlay, J.; Siegel, R.L.; Laversanne, M.; Soerjomataram, I.; Jemal, A.; Bray, F. Global Cancer Statistics 2020: GLOBOCAN Estimates of incidence and mortality worldwide for 36 cancers in 185 countries. *CA Cancer J. Clin.* **2021**, *71*, 209–249. [[CrossRef](#)] [[PubMed](#)]
2. Siegel, R.L.; Miller, K.D.; Goding Sauer, A.; Fedewa, S.A.; Butterly, L.F.; Anderson, J.C.; Cercek, A.; Smith, R.A.; Jemal, A. Colorectal cancer statistics, 2020. *CA A Cancer J. Clin.* **2020**, *70*, 145–164. [[CrossRef](#)] [[PubMed](#)]
3. Kuipers, E.J.; Rösch, T.; Bretthauer, M. Colorectal cancer screening—optimizing current strategies and new directions. *Nat. Rev. Clin. Oncol.* **2013**, *10*, 130–142. [[CrossRef](#)] [[PubMed](#)]
4. Sawicki, T.; Ruskowska, M.; Danielewicz, A.; Niedźwiedzka, E.; Arłukowicz, T.; Przybyłowicz, K.E. A review of colorectal cancer in terms of epidemiology, risk factors, development, symptoms and diagnosis. *Cancers* **2021**, *13*, 2025. [[CrossRef](#)]
5. Rawla, P.; Sunkara, T.; Barsouk, A. Epidemiology of colorectal cancer: Incidence, mortality, survival, and risk factors. *Prz. Gastroenterol.* **2019**, *14*, 89–103. [[CrossRef](#)]

6. Kuipers, E.J.; Grady, W.M.; Lieberman, D.; Seufferlein, T.; Sung, J.J.; Boelens, P.G.; van de Velde, C.J.; Watanabe, T. Colorectal cancer. *Nat. Rev. Dis. Primers* **2015**, *1*, 15065. [[CrossRef](#)]
7. Nguyen, L.H.; Goel, A.; Chung, D.C. Pathways of Colorectal Carcinogenesis. *Gastroenterology* **2020**, *158*, 291–302. [[CrossRef](#)]
8. O'Brien, J.; Hayder, H.; Zayed, Y.; Peng, C. Overview of microRNA biogenesis, mechanisms of actions, and circulation. *Front. Endocrinol.* **2018**, *9*, 402. [[CrossRef](#)]
9. Volinia, S.; Calin, G.A.; Liu, C.G.; Ambs, S.; Cimmino, A.; Petrocca, F.; Visone, R.; Iorio, M.; Roldo, C.; Ferracin, M.; et al. A microRNA expression signature of human solid tumors defines cancer gene targets. *Proc. Natl. Acad. Sci. USA* **2006**, *103*, 2257–2261. [[CrossRef](#)]
10. Asangani, I.; Rasheed, S.; Nikolova, D.; Leupold, J.H.; Colburn, N.H.; Post, S.; Allgayer, H. MicroRNA-21 (miR-21) post-transcriptionally downregulates tumor suppressor Pcd4 and stimulates invasion, intravasation and metastasis in colorectal cancer. *Oncogene* **2008**, *27*, 2128–2136. [[CrossRef](#)]
11. Mudduluru, G.; Medved, F.; Grobholz, R.; Jost, C.; Gruber, A.; Leupold, J.H.; Post, S.; Jansen, A.; Colburn, N.H.; Allgayer, H. Loss of programmed cell death 4 expression marks adenoma-carcinoma transition, correlates inversely with phosphorylated protein kinase B, and is an independent prognostic factor in resected colorectal cancer. *Cancer* **2007**, *110*, 1697–1707. [[CrossRef](#)] [[PubMed](#)]
12. Si, M.L.; Zhu, S.; Wu, H.; Lu, Z.; Wu, F.; Mo, Y.Y. miR-21-mediated tumor growth. *Oncogene* **2007**, *26*, 2799–2803. [[CrossRef](#)]
13. Rosenberg, D.W.; Giardina, C.; Tanaka, T. Mouse models for the study of colon carcinogenesis. *Carcinogenesis* **2009**, *30*, 183–196. [[CrossRef](#)] [[PubMed](#)]
14. Bernstein, C.; Holubec, H.; Bhattacharyya, A.K.; Nguyen, H.; Payne, C.M.; Zaitlin, B.; Bernstein, H. Carcinogenicity of deoxycholate, a secondary bile acid. *Arch. Toxicol.* **2011**, *85*, 863–871. [[CrossRef](#)] [[PubMed](#)]
15. Venkatachalam, K.; Vinayagam, R.; Arokia, V.A.M.; Isa, N.M.; Ponnaiyan, R. Biochemical and molecular aspects of 1,2-dimethylhydrazine (DMH)-induced colon carcinogenesis: A review. *Toxicol. Res.* **2020**, *9*, 2–18. [[CrossRef](#)]
16. Orlando, F.A.; Tan, D.; Baltodano, J.D.; Khoury, T.; Gibbs, J.F.; Hassid, V.J.; Ahmed, B.H.; Alrawi, S.J. Aberrant crypt foci as precursors in colorectal cancer progression. *J. Surg. Oncol.* **2008**, *98*, 207–213. [[CrossRef](#)]
17. Kristt, D.; Bryan, K.; Gal, R. Colonic aberrant crypts may originate from impaired fissioning: Relevance to increased risk of neoplasia. *Hum. Pathol.* **1999**, *30*, 1449–1458. [[CrossRef](#)]
18. Nucci, M.R.; Robinson, C.R.; Longo, P.; Campbell, P.; Hamilton, S.R. Phenotypic and genotypic characteristics of aberrant crypt foci in human colorectal mucosa. *Hum. Pathol.* **1997**, *28*, 1396–1407. [[CrossRef](#)]
19. Veettil, S.K.; Wong, T.Y.; Loo, Y.S.; Playdon, M.C.; Lai, N.M.; Giovannucci, E.L.; Chaiyakunapruk, N. Role of diet in colorectal cancer incidence: Umbrella review of meta-analyses of prospective observational studies. *JAMA Netw. Open.* **2021**, *4*, e2037341. [[CrossRef](#)]
20. International Coffee Organization. Country Data on the Global Coffee Trade. 2016. Available online: [http://www.ico.org/profiles\\_e.asp](http://www.ico.org/profiles_e.asp) (accessed on 17 November 2021).
21. International Coffee Organization. Historical Data on the Global Coffee Trade. 2018. Available online: [http://www.ico.org/new\\_historical.asp?section=Statistics](http://www.ico.org/new_historical.asp?section=Statistics) (accessed on 17 November 2021).
22. Romualdo, G.R.; Rocha, A.B.; Vinken, M.; Cogliati, B.; Moreno, F.S.; Chaves, M.A.G.; Barbisan, L.F. Drinking for protection? Epidemiological and experimental evidence on the beneficial effects of coffee or major coffee compounds against gastrointestinal and liver carcinogenesis. *Food Res. Int.* **2019**, *123*, 567–589. [[CrossRef](#)]
23. Akter, S.; Kashino, I.; Mizoue, T.; Matsuo, K.; Ito, H.; Wakai, K.; Nishino, Y. Coffee drinking and colorectal cancer risk: An evaluation based on a systematic re-view and meta-analysis among the Japanese population. *Jpn. J. Clin. Oncol.* **2016**, *46*, 781–787. [[CrossRef](#)] [[PubMed](#)]
24. Gan, Y.; Wu, J.; Zhang, S.; Li, L.; Cao, S.; Mkandawire, N.; Ji, K.; Herath, C.; Gao, C.; Xu, H.; et al. Association of coffee consumption with risk of colorectal cancer: A meta-analysis of prospective cohort studies. *Oncotarget.* **2017**, *8*, 18699–18711. [[CrossRef](#)] [[PubMed](#)]
25. Guercio, B.J.; Sato, K.; Niedzwiecki, D.; Ye, X.; Saltz, L.B.; Mayer, R.J.; Mowat, R.B.; Whittom, R.; Hantel, A.; Benson, A.; et al. Coffee intake, recurrence, and mortality in stage III colon cancer: Results from CALGB 89803 (Alliance). *J. Clin. Oncol.* **2015**, *33*, 3598–3607. [[CrossRef](#)] [[PubMed](#)]
26. Mackintosh, C.; Yuan, C.; Ou, F.S.; Zhang, S.; Niedzwiecki, D.; Chang, I.W.; O'Neil, B.H.; Mullen, B.C.; Lenz, H.J.; Blanke, C.D.; et al. Association of coffee intake with survival in patients with advanced or metastatic colorectal cancer. *JAMA Oncol.* **2020**, *6*, 1713–1721. [[CrossRef](#)]
27. Gaascht, F.; Dicato, M.; Diederich, M. Coffee provides a natural multitarget pharmacopeia against the hallmarks of cancer. *Genes Nutr.* **2015**, *10*, 51. [[CrossRef](#)]
28. Jeon, J.S.; Kim, H.T.; Jeong, I.H.; Hong, S.R.; Oh, M.S.; Park, K.H.; Shim, J.H.; Abd El-Aty, A.M. Determination of chlorogenic acids and caffeine in homemade brewed coffee prepared under various conditions. *J. Chromatogr. B Analyt. Technol. Biomed. Life Sci.* **2017**, *1064*, 115–123. [[CrossRef](#)]
29. Romualdo, G.R.; Prata, G.B.; da Silva, T.C.; Evangelista, A.F.; Reis, R.M.; Vinken, M.; Moreno, F.S.; Cogliati, B.; Barbisan, L.F. The combination of coffee compounds attenuates early fibrosis-associated hepatocarcinogenesis in mice: Involvement of miRNA profile modulation. *J. Nutr. Biochem.* **2020**, *85*, 108479. [[CrossRef](#)]
30. Bird, R.P. Observation and quantification of aberrant crypts in the murine colon treated with a colon carcinogen: Preliminary findings. *Cancer Lett.* **1987**, *37*, 147–151. [[CrossRef](#)]

31. Stalmach, A.; Steiling, H.; Williamson, G.; Crozier, A. Bioavailability of chlorogenic acids following acute ingestion of coffee by humans with an ileostomy. *Arch. Biochem. Biophys.* **2010**, *501*, 98–105. [[CrossRef](#)]
32. Stalmach, A.; Mullen, W.; Barron, D.; Uchida, K.; Yokota, T.; Cavin, C.; Steiling, H.; Williamson, G.; Crozier, A. Metabolite profiling of hydroxycinnamate derivatives in plasma and urine after the ingestion of coffee by humans: Identification of biomarkers of coffee consumption. *Drug Metab. Dispos.* **2009**, *37*, 1749–1758. [[CrossRef](#)]
33. Lang, R.; Dieminger, N.; Beusch, A.; Lee, Y.M.; Dunkel, A.; Suess, B.; Skurk, T.; Wahl, A.; Hauner, H.; Hofmann, T. Bioappearance and pharmacokinetics of bioactives upon coffee consumption. *Anal. Bioanal. Chem.* **2013**, *405*, 8487–8503. [[CrossRef](#)] [[PubMed](#)]
34. Kot, M.; Daniel, W.A. Caffeine as a marker substrate for testing cytochrome P450 activity in human and rat. *Pharmacol. Rep.* **2008**, *60*, 789–797. [[PubMed](#)]
35. Christopher, M.; Yuan, C.; Ou, F.-S.; Zhang, S.; Niedzwiecki, D.; Chang, I.-W.; O’Neil, B.H.; Mullen, B.C.; Lenz, H.-J.; Blanke, C.D.; et al. Association of Coffee intake with survival in patients with advanced or metastatic colorectal cancer. *JAMA Oncol.* **2021**, *7*, 779–780. [[CrossRef](#)]
36. Megaraj, V.; Ding, X.; Fang, C.; Kovalchuk, N.; Zhu, Y.; Zhang, Q.-Y. Role of hepatic and intestinal P450 enzymes in the metabolic activation of the colon carcinogen azoxymethane in mice. *Chem. Res. Toxicol.* **2014**, *27*, 656–662. [[CrossRef](#)]
37. Zhao, S.; Gong, Z.; Zhou, J.; Tian, C.; Gao, Y.; Xu, C.; Chen, Y.; Cai, W.; Wu, J. Deoxycholic acid triggers NLRP3 Inflammasome activation and aggravates DSS-induced colitis in mice. *Front. Immunol.* **2016**, *7*, 536. [[CrossRef](#)]
38. Soares, P.V.; Kannen, V.; Jordão Junior, A.A.; Garcia, S.B. Coffee, but neither decaffeinated coffee nor caffeine, elicits chemoprotection against a direct carcinogen in the colon of Wistar rats. *Nutr. Cancer* **2018**, *71*, 615–626. [[CrossRef](#)]
39. Carter, O.; Wang, R.; Dashwood, W.M.; Orner, G.A.; Fischer, K.A.; Löhr, C.V.; Dashwood, R.H. Comparison of white tea, green tea, epigallocatechin-3-gallate, and caffeine as inhibitors of PhIP-induced colonic aberrant crypts. *Nutr. Cancer* **2007**, *58*, 60–65. [[CrossRef](#)]
40. Morishita, Y.; Yoshimi, N.; Kawabata, K.; Matsunaga, K.; Sugie, S.; Tanaka, T.; Mori, H. Regressive effects of various chemopreventive agents on azoxymethane-induced aberrant crypt foci in the rat colon. *Jpn. J. Cancer Res.* **1997**, *88*, 815–820. [[CrossRef](#)]
41. Kanaan, Z.; Rai, S.N.; Eichenberger, M.R.; Roberts, H.; Keskey, B.; Pan, J.; Galandiuk, S. Plasma miR-21: A potential diagnostic marker of colorectal cancer. *Ann. Surg.* **2012**, *256*, 544–551. [[CrossRef](#)]
42. Schee, K.; Boye, K.; Abrahamsen, T.W.; Fodstad, Ø.; Flatmark, K. Clinical relevance of microRNA miR-21, miR-31, miR-92a, miR-101, miR-106a and miR-145 in colorectal cancer. *BMC Cancer* **2012**, *12*, 505. [[CrossRef](#)]
43. Cottonham, C.L.; Kaneko, S.; Xu, L. miR-21 and miR-31 converge on TIAM1 to regulate migration and invasion of colon carcinoma cells. *J. Biol. Chem.* **2010**, *285*, 35293–35302. [[CrossRef](#)] [[PubMed](#)]
44. Deng, J.; Lei, W.; Fu, J.C.; Zhang, L.; Li, J.H.; Xiong, J.P. Targeting miR-21 enhances the sensitivity of human colon cancer HT-29 cells to chemoradiotherapy in vitro. *Biochem. Biophys. Res. Commun.* **2014**, *443*, 789–795. [[CrossRef](#)] [[PubMed](#)]
45. Xiong, B.; Cheng, Y.; Ma, L.; Zhang, C. MiR-21 regulates biological behavior through the PTEN/PI-3 K/Akt signaling pathway in human colorectal cancer cells. *Int. J. Oncol.* **2013**, *42*, 219–228. [[CrossRef](#)] [[PubMed](#)]
46. Ma, Q.Y.; Williamson, K.E.; Rowlands, B.J. Variability of cell proliferation in the proximal and distal colon of normal rats and rats with dimethylhydrazine induced carcinogenesis. *World J. Gastroenterol.* **2002**, *8*, 847–852. [[CrossRef](#)]
47. Roncucci, L.; Pedroni, M.; Vaccina, F.; Benatti, P.; Marzona, L.; De Pol, A. Aberrant crypt foci in colorectal carcinogenesis. Cell and crypt dynamics. *Cell Prolif.* **2000**, *33*, 1–18. [[CrossRef](#)] [[PubMed](#)]
48. Liu, L.; Dong, W.; Wang, S.; Zhang, Y.; Liu, T.; Xie, R.; Wang, B.; Cao, H. Deoxycholic acid disrupts the intestinal mucosal barrier and promotes intestinal tumorigenesis. *Food Funct.* **2018**, *9*, 5588–5597. [[CrossRef](#)]
49. Xu, M.; Cen, M.; Shen, Y.; Zhu, Y.; Cheng, F.; Tang, L.; Hu, W.; Dai, N. Deoxycholic acid-induced gut dysbiosis disrupts bile acid enterohepatic circulation and promotes intestinal inflammation. *Dig. Dis. Sci.* **2021**, *66*, 568–576. [[CrossRef](#)]
50. Itatani, Y.; Kawada, K.; Sakai, Y. Transforming growth factor- $\beta$  signaling pathway in colorectal cancer and its tumor microenvironment. *Int. J. Mol. Sci.* **2019**, *20*, 5822. [[CrossRef](#)]
51. Terzić, J.; Grivennikov, S.; Karin, E.; Karin, M. Inflammation and colon cancer. *Gastroenterology* **2010**, *138*, 2101–2114.e5. [[CrossRef](#)]
52. Mezheyeuski, A.; Micke, P.; Martín-Bernabé, A.; Backman, M.; Hrynchyk, I.; Hammarström, K.; Ström, S.; Ekström, J.; Edqvist, P.-H.; Sundström, M. The immune landscape of colorectal cancer. *Cancers* **2021**, *13*, 5545. [[CrossRef](#)]
53. Yu, H.; Pardoll, D.; Jove, R. STATs in cancer inflammation and immunity: A leading role for STAT3. *Nat. Rev. Cancer* **2009**, *9*, 798–809. [[CrossRef](#)] [[PubMed](#)]
54. Waldner, M.J.; Foersch, S.; Neurath, M.F. Interleukin-6—A key regulator of colorectal cancer development. *Int. J. Biol. Sci.* **2012**, *8*, 1248–1253. [[CrossRef](#)] [[PubMed](#)]
55. Heichler, C.; Scheibe, K.; Schmied, A.; Geppert, C.I.; Schmid, B.; Wirtz, S.; Thoma, O.-M.; Kramer, V.; Waldner, M.J.; Büttner, C.; et al. STAT3 activation through IL-6/IL-11 in cancer-associated fibroblasts promotes colorectal tumour development and correlates with poor prognosis. *Gut* **2020**, *69*, 1269–1282. [[CrossRef](#)] [[PubMed](#)]
56. Mager, L.F.; Wasmer, M.H.; Rau, T.T.; Krebs, P. Cytokine-induced modulation of colorectal cancer. *Front. Oncol.* **2016**, *6*, 96. [[CrossRef](#)]
57. Popivanova, B.K.; Kitamura, K.; Wu, Y.; Kondo, T.; Kagaya, T.; Kaneko, S.; Oshima, M.; Fujii, C.; Mukaida, N. Blocking TNF-alpha in mice reduces colorectal carcinogenesis associated with chronic colitis. *J. Clin. Investig.* **2008**, *118*, 560–570. [[CrossRef](#)]

58. Kruglov, A.A.; Kuchmiy, A.; Grivennikov, S.I.; Tumanov, A.V.; Kuprash, D.V.; Nedospasov, S.A. Physiological functions of tumor necrosis factor and the consequences of its pathologic overexpression or blockade: Mouse models. *Cytokine Growth Factor Rev.* **2008**, *19*, 231–244. [[CrossRef](#)]
59. Parker, K.H.; Beury, D.W.; Ostrand-Rosenberg, S. Chapter Three—Myeloid-Derived Suppressor Cells: Critical Cells Driving Immune Suppression in the Tumor Microenvironment. In *Advances in Cancer Research*; Wang, X.-Y., Fisher, P.B., Eds.; Academic Press: Cambridge, MA, USA, 2015; pp. 95–139. [[CrossRef](#)]
60. Xie, Z.; Qu, Y.; Leng, Y.; Sun, W.; Ma, S.; Wei, J.; Hu, J.; Zhang, X. Human colon carcinogenesis is associated with increased interleukin-17-driven inflammatory responses. *Drug Des. Dev. Ther.* **2015**, *9*, 1679–1689. [[CrossRef](#)]
61. Gurley, K.E.; Moser, R.D.; Kemp, C.J. Induction of colon cancer in mice with 1,2-dimethylhydrazine. *Cold Spring Harb Protoc.* **2015**, 2015, pdb.prot077453. [[CrossRef](#)]
62. National Research Council (US) Committee for the Update of the Guide for the Care and Use of Laboratory Animals. *Guide for the Care and Use of Laboratory Animal*, 8th ed.; National Academies Press (US): Washington, DC, USA, 2011.
63. Je, Y.; Liu, W.; Giovannucci, E. Coffee consumption and risk of colorectal cancer: A systematic review and meta-analysis of prospective cohort studies. *Int. J. Cancer* **2009**, *124*, 1662–1668. [[CrossRef](#)]
64. Xie, Y.; Huang, S.; He, T.; Su, Y. Coffee consumption and risk of gastric cancer: An updated meta-analysis. *Asia Pac. J. Clin. Nutr.* **2016**, *25*, 578–588. [[CrossRef](#)]
65. Reagan-Shaw, S.; Nihal, M.; Ahmad, N. Dose translation from animal to human studies revisited. *FASEB J.* **2008**, *22*, 659–661. [[CrossRef](#)] [[PubMed](#)]
66. European Food Safety Authority. Scientific opinion on the safety of caffeine. *EFSA J.* **2015**, *13*, 4102–4222. [[CrossRef](#)]
67. Caetano, B.F.R.; Tablas, M.B.; Romualdo, G.R.; Rodrigues, M.A.M.; Barbisan, L.F. Early molecular events associated with liver and colon sub-acute responses to 1,2-dimethylhydrazine: Potential implications on preneoplastic and neoplastic lesion development. *Toxicol Lett.* **2020**, *329*, 67–79. [[CrossRef](#)] [[PubMed](#)]
68. Huang, D.W.; Sherman, B.T.; Lempicki, R.A. Systematic and integrative analysis of large gene lists using DAVID bioinformatics resources. *Nat. Protoc.* **2009**, *4*, 44–57. [[CrossRef](#)]