

****FULL TITLE****
*ASP Conference Series, Vol. **VOLUME**, **YEAR OF PUBLICATION***
****NAMES OF EDITORS****

Setting the normalcy level of HI properties in isolated galaxies

D. Espada^{1,2}, L. Verdes-Montenegro¹, E. Athanassoula³, A. Bosma³, W. K. Huchtmeier⁴, S. Leon⁵, U. Lisenfeld⁶, J. Sabater¹, J. Sulentic¹, S. Verley⁶ and M. Yun⁷

¹ *Instituto de Astrofísica de Andalucía (IAA-CSIC) (daniel@iaa.es);* ² *Harvard-Smithsonian Center for Astrophysics (CfA);* ³ *Laboratoire d'Astrophysique de Marseille;* ⁴ *Max-Planck-Institut fuer Radioastronomie (MPIfR);* ⁵ *Instituto de Radioastronomía Milimétrica (IRAM);* ⁶ *Universidad de Granada;* ⁷ *UMass-Amherst*

Abstract. Studying the atomic gas (HI) properties of the most isolated galaxies is essential to quantify the effect that the environment exerts on this sensitive component of the interstellar medium. We observed and compiled HI data for a well defined sample of ~ 800 galaxies in the Catalog of Isolated Galaxies, as part of the AMIGA project (Analysis of the ISM in Isolated GALaxies, <http://amiga.iaa.es>), which enlarges considerably previous samples used to quantify the HI deficiency in galaxies located in denser environments. By studying the shape of 182 HI profiles, we revisited the usually accepted result that, independently of the environment, more than half of the galaxies present a perturbed HI disk. In isolated galaxies this would certainly be a striking result if these are supposed to be the most relaxed systems, and has implications in the relaxation time scales of HI disks and the nature of the most frequent perturbing mechanisms in galaxies. Our sample likely exhibits the lowest HI asymmetry level in the local Universe. We found that field samples present an excess of $\sim 20\%$ more asymmetric HI profiles than that in CIG. Still a small percentage of galaxies in our sample present large asymmetries. Follow-up high resolution VLA maps give insight into the origin of such asymmetries.

1. Introduction

Atomic gas (HI) is presumably the most extended cold component of the interstellar medium (ISM) and is very sensitive to any kind of perturbation. For instance, the HI component in spiral galaxies has long been known to show both geometric and kinematic asymmetries (e.g. Beale & Davies 1969; Baldwin et al. 1980), and the HI content is found to be deficient in galaxies in denser environments (e.g. Davies & Lewis 1973). Although asymmetries have also been seen in stellar disks (e.g. Zaritsky & Rix 1997), the fact that HI is usually twice more extended than the optical component makes it arguably a better tracer of interaction. The study of HI global velocity profiles of galaxies has proven to be very useful for both the quantification of the HI content as well as the asymmetry level. In the context of the AMIGA project, we use HI global velocity profiles of a large sample of strictly isolated galaxies in order to: *i*) revise the reference to study the HI content normalcy level in galaxies, *ii*) quantify the rate of HI asymmetries, and *iii*) study the relevance of different mechanisms producing asymmetries in galaxies, with the additional help of aperture synthesis maps.

2. HI content

We present HI data for $N = 834$ CIG galaxies (Catalog of Isolated Galaxies, Karachentseva 1973) and study the correlations between the HI content and different parameters associated with the stellar component: optical luminosities (see Figure 1, left), diameters and morphological type. We calculated HI fluxes, mean velocities, line-widths and HI masses for galaxies we observed at the Arecibo, Effelsberg, Nançay and Green Bank (GBT) radio-telescopes, or compiled from different sources in the literature (Espada et al. 2009). Survival analysis was applied in order to use the information given by upper limits. This sample is about 3 times larger than that of Haynes & Giovanelli (1984), the prevalent reference of HI data for isolated galaxies to date, increasing considerably the population per morphological bin. This is important especially for the less populated bins, such as E and Sd/Irr, where our sample has a factor 5–10 more galaxies. Our improved sample is thus essential as a control sample for studies involving galaxies in denser environments. We note that to compare the HI content of two different samples, one needs to homogeneously adopt the same constants and corrections, since otherwise the differences may be comparable to the observed levels of deficiency.

3. Global measure of HI asymmetry

The frequency and amplitude of gaseous disk asymmetries have been studied by several authors, with the main conclusion that at least half of the galaxies are asymmetric even in the field (e.g. Richter & Sancisi 1994). We restricted our study to a subsample of $N = 182$ galaxies for which we have global HI velocity profiles with $S/N > 10$ and minimized undesired artificial lopsidedness. We calculated a flux ratio asymmetry parameter to quantify the asymmetry of the profiles, defined as $A_{flux\ ratio} = A_{l/h}$, if $A_{l/h} > 1$, and $1/A_{l/h}$ otherwise, where $A_{l/h}$ is the ratio of the areas under the profile at velocities lower and higher than the central velocity (e.g. Haynes et al. 1998). We minimized artificial asymmetries by avoiding large pointing offsets and poor determinations of the central velocity which resulted in possible errors of $A_{flux\ ratio}$ larger than 10%.

The resulting $A_{flux\ ratio}$ distribution was characterized by a half-Gaussian profile with a FWHM/2 of 0.13 (Figure 1, right). This width is very likely smaller than 0.13, since remaining systematic errors were estimated to be $\sim 7\%$, mostly produced by pointing offsets and an inaccurate determination of the mean velocity. For large values of the parameters, $A_{flux\ ratio} > 1.3$, we found a total of 16 galaxies. This corresponds to an excess of 12 more than what would correspond to the fitted half-Gaussian profile, or a 6% of the subsample. This is very likely a residual of interacting systems.

Among our sample of isolated galaxies we find a weak trend for larger HI asymmetries to be related to less isolated systems. We plot in Figure 2 (left) the comparison of the distribution of the tidal strength (Q_{Kar}) and galaxy surface number density (η_K) parameters (Verley et al. 2007a,b) for the most symmetric ($A_{flux\ ratio} < 1.13$) and the most asymmetric profiles ($A_{flux\ ratio} > 1.13$). Smaller η_K and Q_{Kar} are found for galaxies with symmetric HI profiles.

In Figure 2 (right) we show the $A_{flux\ ratio}$ cumulative probability distribution of previous samples of field/isolated galaxies and compare it with that in

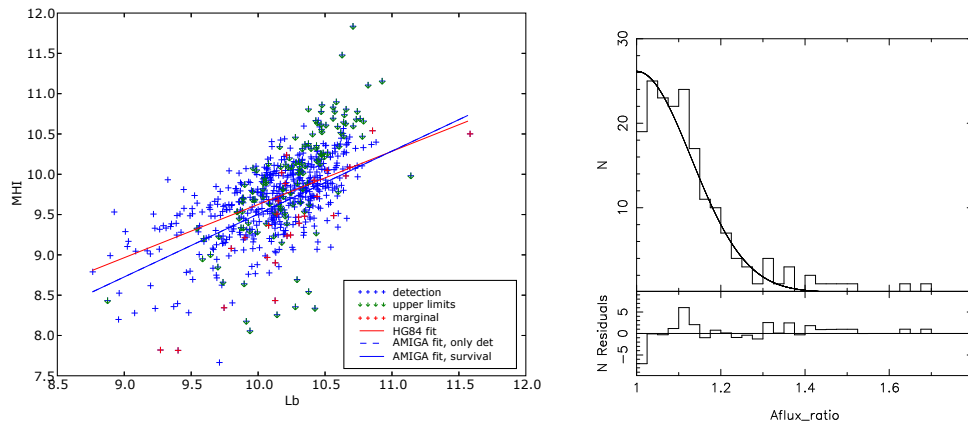


Figure 1. (*Left*): M_{HI} vs L_B plot for the whole sample of $N = 837$ galaxies. Detections (cross signs) as well as upper limits (arrow signs) are included. The fit presented by Haynes & Giovanelli (1984) is shown as a red line, and that of our sample in blue. (*Right*): $A_{flux\ ratio}$ distribution, half-Gaussian fit and the residuals.

our sample. We found a $\sim 20\%$ excess of asymmetric profiles in samples of field galaxies or not obviously interacting galaxies. The only similar distribution to ours is that of Haynes et al. (1998), whose sample comprises some isolated galaxies, although not members of CIG. The rate of asymmetric profiles is expected to be even higher in strongly interacting galaxies.

4. Origin of HI asymmetries

We carried out a follow-up study of the origin of the HI asymmetries for eight galaxies with the most asymmetric profiles as well as four galaxies with the most symmetric HI profiles for comparison, using VLA aperture synthesis HI observations. One of the isolated galaxies with an asymmetric profile in this subsample is CIG 96 (NGC 864), whose HI synthesis imaging from the VLA has been studied in detail in Espada et al. (2005). The asymmetry in its HI profile is associated with a strong kinematical perturbation in the gaseous envelope of the galaxy, where on one side the decay of the rotation curve is faster than Keplerian. Although a companion is detected, no tidal tail is found, and it is probably not massive enough to cause such a perturbation. Probably we are witnessing the capture of a gaseous companion. Aperture synthesis maps for the rest of the sources showed more symmetric structures, both in geometry and kinematics. Neither tidal tails nor relevant HI rich companions were found close to any of the galaxies. The asymmetry was usually found in the kinematics, in the sense that the rotation curve on one side of the galaxy was steeper. These results are similar to that in other galaxies (Swaters et al. 1999), not necessarily isolated. Given that in average galaxies in our sample did not likely undergo a major interaction since less than 3 Gyr ago (Verdes-Montenegro et al. 2005),

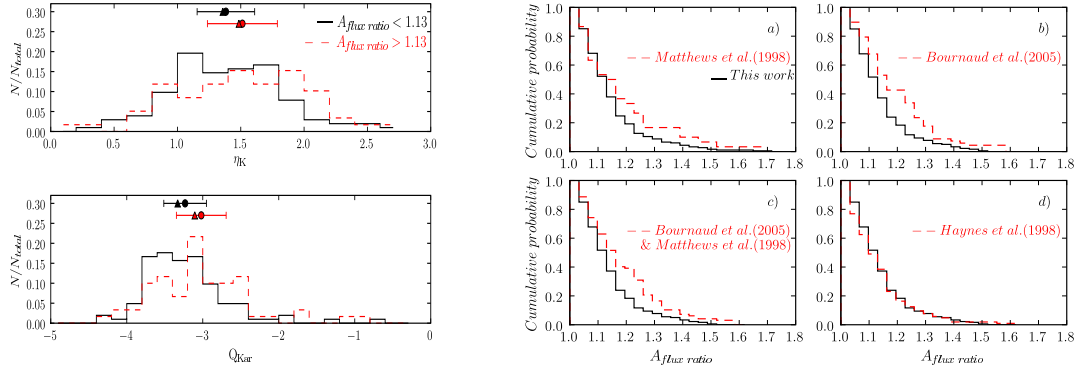


Figure 2. (*Left*): Isolation parameter distribution (Q_{Kar} and η_K) for symmetric ($A_{flux\ ratio} < 1.13$, solid-line histogram) and asymmetric ($A_{flux\ ratio} > 1.13$, dashed-line histogram) HI profiles. The mean, standard deviation and median are shown as circle, bar and triangle signs, respectively. (*Right*): Comparison of the cumulative $A_{flux\ ratio}$ distribution between our sample (solid line) and other samples (dashed line).

these asymmetries may either be the remnants of a major interaction longer ago, or of a more recent short-lived mechanism such as a minor merger.

Acknowledgments. This work has been partially supported by Spanish DGI grant AYA2008-06181-C02, as well as Junta de Andalucia (Spain) grants P08-FQM-4205-PEX and TIC-114 16-C02-01. DE is supported by the Marie Curie International fellowship MOIF-CT-2006-40298.

References

- Baldwin, J. E., Lynden-Bell, D., & Sancisi, R. 1980, MNRAS, 193, 313
 Beale, J. S., & Davies, R. D. 1969, Nat, 221, 531
 Zaritsky, D., & Rix, H.-W. 1997, ApJ, 477, 118
 Bournaud, F., Combes, F., Jog, C. J., & Puerari, I. 2005, A&A, 438, 507
 Davies, R. D., & Lewis, B. M. 1973, MNRAS, 165, 231
 Espada, D., Bosma, A., Verdes-Montenegro, L., Athanassoula, E., Leon, S., Sulentic, J., & Yun, M. S. 2005, A&A, 442, 455
 —. 2009, in prep.
 Haynes, M. P., & Giovanelli, R. 1984, AJ, 89, 758
 Haynes, M. P., van Zee, L., Hogg, D. E., Roberts, M. S., & Maddalena, R. J. 1998, AJ, 115, 62
 Karachentseva, V. E. 1973, Astrofizicheskie Issledovaniia Izvestiya Spetsial'noj Astrofizicheskoy Observatorii, 8, 3
 Matthews, L. D., van Driel, W., & Gallagher, III, J. S. 1998, AJ, 116, 1169
 Richter, O.-G., & Sancisi, R. 1994, A&A, 290, L9
 Swaters, R. A., Schoenmakers, R. H. M., Sancisi, R., & van Albada, T. S. 1999, MNRAS, 304, 330
 Verdes-Montenegro, L., Sulentic, J., Lisenfeld, U., Leon, S., Espada, D., Garcia, E., Sabater, J., & Verley, S. 2005, A&A, 436, 443
 Verley, S., et al. 2007a, A&A, 470, 505
 Verley, S., et al. 2007b, A&A, 472, 121