



Article

In-Season Internal Load and Wellness Variations in Professional Women Soccer Players: Comparisons between Playing Positions and Status

Renato Fernandes ^{1,2,3,*}, João Paulo Brito ^{1,2,4} , Luiz H. Palucci Vieira ⁵ , Alexandre Duarte Martins ^{1,2,6} ,
Filipe Manuel Clemente ^{7,8} , Hadi Nobari ^{9,10,11,12} , Victor Machado Reis ^{3,4} and Rafael Oliveira ^{1,2,4,*}

- ¹ Sports Science School of Rio Maior–Polytechnic Institute of Santarém, 2040-413 Rio Maior, Portugal; jbrito@esdrm.ipsantarem.pt (J.P.B.); alexandremartins@esdrm.ipsantarem.pt (A.D.M.)
- ² Life Quality Research Centre, 2040-413 Rio Maior, Portugal
- ³ University of Trás-os-Montes e Alto Douro, 5001-801 Vila Real, Portugal; victormachadoreis@gmail.com
- ⁴ Research Centre in Sport Sciences, Health Sciences and Human Development, 5001-801 Vila Real, Portugal
- ⁵ Graduate Program in Movement Sciences, MOVI-LAB Human Movement Research Laboratory, Physical Education Department, School of Sciences, UNESP São Paulo State University, Bauru 17033-360, Brazil; luiz.palucci@unesp.br
- ⁶ Comprehensive Health Research Centre (CHRC), Departamento de Desporto e Saúde, Escola de Saúde e Desenvolvimento Humano, Universidade de Évora, Largo dos Colegiais, 7004-516 Évora, Portugal
- ⁷ Escola Superior Desporto e Lazer, Instituto Politécnico de Viana do Castelo, Rua Escola Industrial e Comercial de Nun'Álvares, 4900-347 Viana do Castelo, Portugal; filipe.clemente5@gmail.com
- ⁸ Instituto de Telecomunicações, Delegação da Covilhã, 1049-001 Lisboa, Portugal
- ⁹ Department of Physical Education and Sports, University of Granada, 18010 Granada, Spain; hadi.nobari1@gmail.com
- ¹⁰ HEME Research Group, Faculty of Sport Sciences, University of Extremadura, 10003 Cáceres, Spain
- ¹¹ Department of Exercise Physiology, Faculty of Educational Sciences and Psychology, University of Mohaghegh Ardabili, Ardabil 56199-11367, Iran
- ¹² Sports Scientist, Sepahan Football Club, Isfahan 81887-78473, Iran
- * Correspondence: rfernandes@esdrm.ipsantarem.pt (R.F.); rafaeloliveira@esdrm.ipsantarem.pt (R.O.)



Citation: Fernandes, R.; Brito, J.P.; Vieira, L.H.P.; Martins, A.D.; Clemente, F.M.; Nobari, H.; Reis, V.M.; Oliveira, R. In-Season Internal Load and Wellness Variations in Professional Women Soccer Players: Comparisons between Playing Positions and Status. *Int. J. Environ. Res. Public Health* **2021**, *18*, 12817. <https://doi.org/10.3390/ijerph182312817>

Academic Editor: Paul B. Tchounwou

Received: 30 October 2021
Accepted: 2 December 2021
Published: 5 December 2021

Publisher's Note: MDPI stays neutral with regard to jurisdictional claims in published maps and institutional affiliations.



Copyright: © 2021 by the authors. Licensee MDPI, Basel, Switzerland. This article is an open access article distributed under the terms and conditions of the Creative Commons Attribution (CC BY) license (<https://creativecommons.org/licenses/by/4.0/>).

Abstract: The internal intensity monitoring in soccer has been used more in recent years in men's football; however, in women's soccer, the existing literature is still scarce. The aims of this study were threefold: (a) to describe the weekly variations of training monotony, training strain and acute: chronic workload ratio through session Rated Perceived Exertion (s-RPE); (b) to describe weekly variations of Hooper Index [stress, fatigue, Delayed Onset Muscle Soreness (DOMS) and sleep]; and (c) to compare those variations between playing positions and player status. Nineteen players (24.1 ± 2.7 years) from a Portuguese BPI League professional team participated in this study. All variables were collected in a 10-week in-season period with three training sessions and one match per week during the 2019/20 season. Considering the overall team, the results showed that there were some associations between Hooper Index categories and s-RPE like stress or fatigue ($0.693, p < 0.01$), stress or DOMS ($0.593, p < 0.01$), stress or s-RPE ($-0.516, p < 0.05$) and fatigue or DOMS ($0.688, p < 0.01$). There were no differences between all parameters in playing positions or player status. In conclusion, the study revealed that higher levels of fatigue and DOMS occur concurrently with better nights of sleep. Moreover, any in-season variations concerning internal load and perceived wellness seems independent of position or status in outfield players. The data also showed that the higher the players' reported stress, the lower the observed s-RPE, thus possibly indicating a mutual interference of experienced stress levels on the assimilation of training intensity by elite women soccer players.

Keywords: muscle soreness; female; stress; fatigue; sleep; perceived exertion; training monotony; training strain

1. Introduction

Load/intensity monitoring is a well-implemented practice in team sports that guides the coach's interventions through a better understanding of the impact of training stimulus on players [1,2]. Monitoring consists of using a given instrument or technique that allows us to track the intensity of exercise in each player. Thus, a wide vision of how the player is coping with the training process is implementing a strategy in which training intensity monitoring is complemented by wellness and readiness monitoring [3]. This integrated approach, also known as athlete's monitoring allows understanding of the mechanisms related to training stimulus and recovery, thus providing some information about how the training periodization is actually done while helping coaches to quickly identify the individual responses of players to stressful situations while monitoring their wellness [4].

Due to the evident variations of a competitive schedule and as a part of the training methodology, it is expected to have in seasonal variations of training intensity (relative or absolute) in players [5]. Training demands are closely related to the training goals and structure of exercise; namely organization, quality, and quantity [2]. Thus, training intensity can be understood as an input variable constrained by the organization of training activities to elicit a given training response in accordance with the coach's expectations [2]. Training intensity monitoring can be organized in two main dimensions: external and internal. The contextualization of these two dimensions is important, since internal responses (i.e., psychophysiological responses) are closely related with the physical demands imposed by a given training drill.

The external demands represent the immediate player's physical responses to the organization, quality, and quantity of exercise (training plan) [2]. In the case of team sports, such physical responses are commonly analyzed using microelectromechanical systems or optical systems that provide estimated values related to distance-based, accelerometry-based, and combined variables [1]. These devices have been used not only in soccer, but in different women's team sports (e.g., rugby, volleyball, handball) in which distance-based and accelerometry-based measures are important to understand the dynamics of training in an heterogeneous groups [6,7]. Currently, the use of microelectromechanical systems (e.g., global positioning systems, local positioning systems or inertial measurement units) allows us to individualize the understanding of intensity demands in women sports such as rugby [8] or soccer [9]. While the external intensity is the acute physical response to the session training plan, the internal demands can be understood as the psychophysiological response to the external demands [10]. This means that, although there are possible similarities in external load, the internal load can be considerably different between two players. Internal responses can be constrained by the individual characteristics of the players, training status, psychological status, health, nutrition, environment, or genetics [2]. Thus, it is reasonable to predict that the same training plan, with possible similar external loads, can provide different internal loads in players. While internal demands represent the acute psychophysiological responses to the exercise, it is expectable that the consistency of the internal training demands across time leads to adaptations in the physiological levels of players with natural variations in the training outcomes [11–13].

Internal intensity is a crucial part of the training monitoring processes. Among different possibilities for monitoring the internal measures (e.g., heart rate monitors, respiratory gas analyzer, and blood lactate), the Rated Perceived Exertion (RPE) is the easiest instrument to apply, since it ensures a valid, reliable, and sensitive approach to quantify and qualify the internal load while using a simple questionnaire [14,15]. Moreover, the final score obtained by the RPE questionnaire can provide useful information to estimate the internal intensity (namely, multiplying the RPE score by the time of training in minutes) [16], or even using this RPE-based training load to estimate the organization of the training, calculating the variability of the load applied in the week (e.g., using an equation to estimate the Training Monotony [TM]) [17], the progression of load across the weeks (e.g., using the Acute: Chronic Workload Ratio [ACWR] to identify a measure of increase or decrease of a load of a week in comparison to the previous one) [18] or identify the Training Strain [TS]

of loads during a week (e.g., multiplying the training monotony by the acute load of the week) [17].

Although some research claims cause–effect consequences of specific intensity measures and injury occurrence [19], this has been dismissed since the absence of quality data and proper methodological approaches to prove that [20–22]. However, these intensity measures are still valuable for guiding coaches to understand the dynamics of stimulus and the impact of the training plans on the actual responses of the players as recently shown in women soccer players [23]. The main evidence about internal intensity variations across the season, while using RPE-based measures, suggests that pre-season is the period in which the internal intensity accumulated in the week and the intensity measures of monotony and strain are typically greater than in the in-season periods [24]. This can be related with the higher external demands occurring in such a period [25], as a consequence of the typical strategy of increasing the volume and frequency of training sessions to provide a higher stress on the player’s organism before starting competition.

Although no strong relationships between training intensity and wellness are identified [26], wellness can be related to different variables, thus we can assist with variations across the season. In the context of soccer monitoring, wellness is quantified and qualified by the Delayed Onset Muscle Soreness (DOMS), sleep quality, fatigue, stress and mood, partially justifying these outcomes by the proposal of Hooper [27] which were updated by MacLean in 2010 [28]. Wellness is currently analyzed using questionnaires and those seem to be sensitive to variations within and between weeks (or periods). As an example, comparisons between pre-season and in-season revealed that pre-season was more strenuous and exhausting for players than the in-season period regarding the wellness variables that were inspected [29].

The main evidence on training monitoring and wellness in soccer has been related to men. However, women soccer players and training monitoring is still growing and due to the natural biological differences, more research to understand the mechanisms of how they cope with training process is needed. Thus, descriptive studies, namely cohorts, are still valuable for characterizing the reality of the training process in women’s soccer. Based on that reason, the purposes of this study were threefold: (a) to describe the weekly variations of TM, TS and ACWR through s-RPE; (b) to describe weekly variations of stress, fatigue, DOMS and sleep; and (c) to compare those variations between playing positions and player status.

2. Materials and Methods

2.1. Subjects

Considering several studies conducted with small sample sizes [5,11–13,23,25,29–36], 19 professional female soccer players participated in this study (24.1 ± 2.7 years, 164.3 ± 4.2 cm, 58.5 ± 8.2 kg). The players belong to a team that participated in the Portuguese BPI League in the 2019/20 season. Based on player status, they were divided into two groups: starters ($n = 11$) and non-starters ($n = 8$). Additionally, the playing positions were divided into five defenders, five central midfielders, four wide midfielders and five strikers. The inclusion criteria included regular participation in most of the training sessions (80% of weekly training sessions), while the exclusion criteria included lack of player information, illness and/or injury for two consecutive weeks. Goalkeepers were excluded from the study. The criteria to define starters and non-starters were assessed week by week against a player’s attendance time at the match and training sessions, and to be considered a starter, a player had to complete at least 60 min in three consecutive matches; players who did not achieve this duration were considered non-starters [34]. All participants were familiarized with the training protocols and signed informed consent prior to the investigation. This study was conducted according to the requirements of the Declaration of Helsinki and was approved by the Ethics Committee of Polytechnic Institute of Santarém (252020 Desporto).

2.2. Design

Training and match data were collected over a 10-week in-season period (between October and December) with three training sessions and one match per week. For the purposes of the present study, all the sessions carried out as the main team sessions were considered. This refers to training sessions in which both the starting and non-starting players trained together. Data from rehabilitation or additional training sessions of recuperation were excluded. This means that sessions after the match day were included whenever both starters and non-starters trained together, but other kinds of recovery training were excluded. This study did not influence or alter the training sessions in any way. Training data collection for this study was carried out at the soccer club's outdoor training pitches. Accumulated total minutes of all training sessions per week are presented in Table 1. Each training session included the warm-up, main phase and slow-down phase plus stretching.

Table 1. Training sessions during the 10-week period.

Weeks (w)	w1	w2	w3	w4	w5	w6	w7	w8	w9	w10
Session duration (total minutes)	385	250	294	285	317	280	274	316	331	270

2.3. Internal Training Load/Intensity Quantification

During training sessions, the CR10-point scale, adapted by Foster et al., was applied [16]. Specifically, thirty minutes after the end of each training session, players rated their RPE value using an app on a tablet. The scores provided by the players were then multiplied by the training duration to obtain the s-RPE [16,37]. The players were previously familiarized with the scale, and all answers were provided individually to avoid non-valid scores.

2.4. Wellness Quantification

Approximately 30 min before each training session, each player was asked to provide the Hooper Index (HI) scores using an app on a tablet. This index includes four categories: fatigue, stress, muscle soreness (scale of 1–7, in which 1 is very, very low and 7 is very, very high), and the quality of sleep of the night that preceded the evaluation (scale of 1–7, in which 1 is very, very bad and 7 is very, very good) [27].

2.5. Calculations of Training Indexes

Through stress, fatigue, DOMS and sleep quality, accumulated data by week were calculated, which includes the summation of each value provided by each training session. Through s-RPE, the following variables were calculated: (i) TM (mean of training load during the seven days of the week divided by the standard deviation of the training load of the seven days) [25,35];

$$TM = \frac{\text{mean of training load during the seven days of the week}}{\text{standard of training load during the seven days of the week}};$$

(ii) TS (sum of the training loads for all training sessions during a week multiplied by training monotony) [25,35];

$$TS = \text{sum of the training loads for all training sessions during a week} * TM;$$

Finally, (iii) ACWR (dividing the acute workload, i.e., the 1-week rolling workload data, by the chronic workload, i.e., the rolling 4-week average workload data) [38–40].

$$ACWR = \frac{\text{acute workload (most recent week)}}{\text{chronic workload (last 4 weeks)}}.$$

2.6. Statistical Analysis

Data were analyzed using SPSS version 22.0 (SPSS Inc., Chicago, IL, USA) for Windows. Initially, descriptive statistics were used to describe and characterize the sample. The Shapiro–Wilk and Levene tests were used to test the assumption of normality and homoscedasticity, respectively. Then, One Way ANOVA was used with the Bonferroni post hoc test to compare player positions and independent *t*-test was used to compare player status [41]. Pearson product–moment correlation coefficient was calculated between s-RPE and HI scores with the following thresholds: ≤ 0.1 , trivial; >0.1 – 0.3 , small; >0.3 – 0.5 , moderate; >0.5 – 0.7 , large; >0.7 – 0.9 , very large; >0.9 – 1.0 , almost perfect. Results were considered significant with $p \leq 0.05$.

3. Results

The weekly changes in DOMS, stress, sleep and fatigue over the 10 week period are presented in Figure 1. Overall, DOMS presented the highest value in week 8 (13.6 arbitrary units (AU)) and the lowest in week 2 (6.8 AU); stress presented the highest value in week 6 (12.0 AU) and the lowest in week 10 (7.3 AU); sleep presented the highest value in week 8 (14.9 AU) and the lowest in week 2 (10.4 AU); and fatigue presented the highest value in week 8 (14.7 AU) and the lowest in week 2 (8.7 AU).

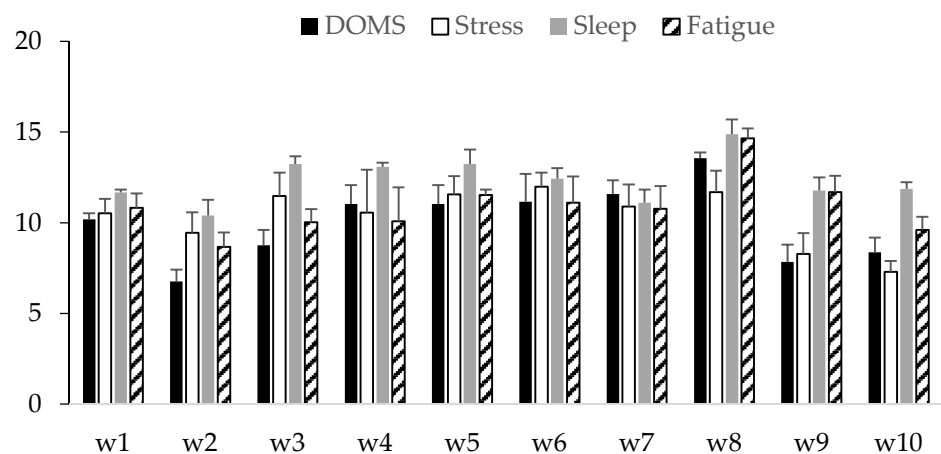


Figure 1. Description of weekly DOMS, stress, sleep and fatigue during the 10 weeks in AU (arbitrary units).

Training monotony and strain over the 10 week period are presented in Figure 2. Overall, training monotony presented the highest value in week 1 (6.3 AU) and the lowest in week 7 (2.7 AU); training strain presented the highest value in week 2 (9665.1 AU) and the lowest in week 7 (3957.6 AU).

ACWR over the 10 week period is presented in Figure 3. Overall, ACWR presented the highest value in week 5 (1.11 AU) and the lowest in week 10 (0.86 AU).

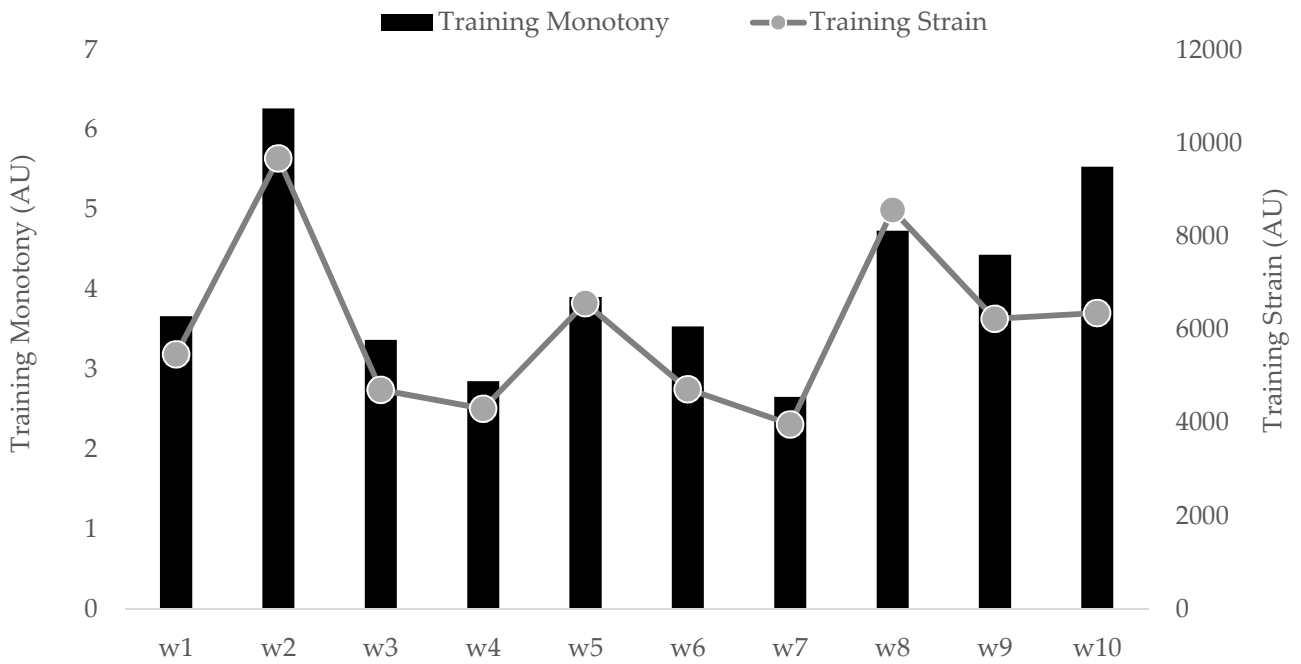


Figure 2. Description of training monotony and training strain during the 10 weeks.

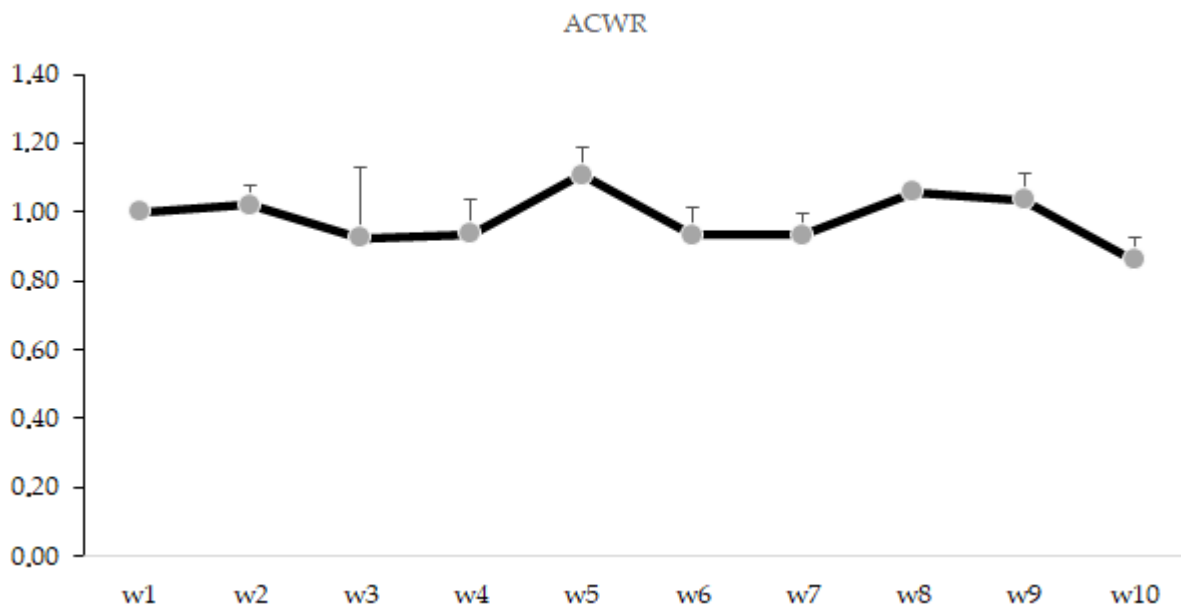


Figure 3. Description of ACWR during the 10 weeks in AU (arbitrary units).

Table 2 presents comparisons for all measures between player positions, while Table 3 presents comparisons between player status. There were no significant differences between player positions nor status.

Table 2. Descriptive statistics (mean \pm SD) of weekly stress, fatigue, DOMS, sleep, training monotony, training strain and ACWR between playing positions.

Measures (AU)	Defenders	Central Midfielders	Wide Midfielders	Strikers	F	P
Stress	12.1 \pm 2.8	8.9 \pm 1.1	10.7 \pm 1.2	9.8 \pm 2.8	1.830	0.185
Fatigue	11.5 \pm 2.2	9.9 \pm 0.6	11.4 \pm 1.8	10.7 \pm 2.4	0.744	0.542
DOMS	9.7 \pm 2.2	9.2 \pm 2.2	11.2 \pm 2.4	9.7 \pm 2.7	0.513	0.680
Sleep	12.9 \pm 1.5	12.6 \pm 0.9	11.9 \pm 1.1	12.2 \pm 1.3	0.589	0.632
TM	4.3 \pm 0.6	4.6 \pm 1.0	4.9 \pm 0.3	4.4 \pm 0.9	0.394	0.759
TS	82.3 \pm 9.3	176.4 \pm 167.2	125.9 \pm 66.4	199.2 \pm 258.3	0.518	0.676
ACWR	0.97 \pm 0.02	0.97 \pm 0.03	0.96 \pm 0.01	0.98 \pm 0.03	0.240	0.867

Abbreviations: AU, arbitrary units; DOMS, delayed onset muscle soreness; TM, training monotony; TS, training strain; ACWR, acute: chronic workload ratio.

Table 3. Descriptive statistics (mean \pm SD) of weekly stress, fatigue, DOMS, sleep, training monotony, training strain and ACWR between playing status.

Measures (AU)	Starters	Non-Starters	T	P
Stress	10.7 \pm 2.8	9.8 \pm 1.6	0.808	0.430
Fatigue	10.9 \pm 2.0	10.8 \pm 1.9	0.157	0.877
DOMS	10.5 \pm 2.7	9.1 \pm 1.2	1.339	0.198
Sleep	12.5 \pm 1.4	12.2 \pm 0.9	0.482	0.636
TM	4.3 \pm 0.7	4.8 \pm 0.8	−1.404	0.178
TS	137.5 \pm 173.9	160.1 \pm 135.2	−0.306	0.763
ACWR	0.96 \pm 0.02	0.98 \pm 0.03	−1.263	0.224

Abbreviations: AU, arbitrary units; DOMS, delayed onset muscle soreness; TM, training monotony; TS, training strain; ACWR, acute: chronic workload ratio.

Considering the overall team, there were some associations between Hooper Index categories and s-RPE indexes. Specifically, the following correlations were found: stress and fatigue (0.693, $p < 0.01$); stress and DOMS (0.593, $p < 0.01$); stress and TS (−0.516, $p < 0.05$); fatigue and DOMS (0.688, $p < 0.01$). Table 4 presents all correlations.

Table 4. Correlation analysis between measures for overall team.

Measures	β_0	β_1	β_2	β_3	β_4	β_5	β_6
Stress (β_0)	1.00						
Fatigue (β_1)	0.693	1.00					
DOMS (β_2)	0.593	0.688	1.00				
Sleep (β_3)	0.412	−0.037	−0.001	1.00			
TM (β_4)	−0.155	0.165	−0.996	−0.248	1.00		
TS (β_5)	− 0.516	−0.411	−0.329	−0.365	0.043	1.00	
ACWR (β_6)	−0.071	0.133	0.148	−0.057	0.012	0.300	1.00

Correlations are highlighted in bold ($p \leq 0.05$). Abbreviations: DOMS, delayed onset muscle soreness; TM, training monotony; TS, training strain; ACWR, acute: chronic workload ratio.

4. Discussion

The aims of this study were: (a) to describe the weekly responses regarding internal training load parameters (TM, TS and ACWR) derived from perceived exertion; (b) to describe weekly variations of wellness markers [stress, fatigue, DOMS and sleep quality]; (c) to identify whether the (unknown) seasonal variations in both load and wellness

measures are dependent upon playing position and status; and (d) to analyze possible associations between the several training measures and wellness markers. The main results of the study were: the peak on stress occurred in the week immediately subsequent to when the highest ACWR values were observed, while the lowest values of either stress or ACWR were reported concomitantly in the same week period; best self-reported sleep quality was identified simultaneously in the week where peaks of fatigue/DOMS occurred whilst the inverse also holds true, that is, the smallest indices of DOMS, fatigue and sleep quality temporally coincided; dynamics of perceived load and wellness variations during a 10-week in-season period were similar for starters and reserve players; and playing position was also not a factor affecting load distribution and wellness sensation in women's soccer.

A slight spike in the ACWR of s-RPE (week 5) likely induced players into a greater perception of stress in the nearest next period (week 6). In the same response pattern, ACWR and stress indices reached the lowest magnitudes together in the end of the monitoring period (week 10). It is important to note that, despite ACWR derived from s-RPE not being a good predictor of injury [42], our outcomes observed across the in-season period did not reach the suggested "danger zone" ($ACWR \geq 1.5$) [43]. This result is in line with another study performed with 65 players from Division I in the United States, which reported this ratio was not associated with injury [44], although some studies reported associations between ACWR and non-contact injury occurrences [42,45–48]. In fact, ACWR score has also been related to perceived effort in women athletes [49]. In addition, TMs across the monitoring weeks were all superior to the traditional cut-point of 2 AU [17]. Although different in magnitude, apparently there were four "valleys" (e.g., week 3 to 4 and week 9 to 10) and three peaks in TM/TS behaviors and this includes week 5 (Figure 2). In this way, women players may be sensitive to simultaneous changes (i.e., some increase) in ACWR, TS and TM—in particular when the first factor notably raises—thus reflecting an ensuing exacerbated stress sensation. As some studies have shown differences in the types of training depending on the moment of the season (i.e., pre, early, mid or end season) [25,50], it is possible link these to the body's adaptations in attempting to accommodate a distinguished training intensity/duration (see Table 1) delivered in this mid-season moment. Owing to the existing relationship between stress symptoms and injury likelihood [51] as well as negative training-induced central adaptations [52], the close monitoring of women players is required at the time of which ACWR and stress spikes happen, aiming to avoid potential time-loss injuries and occasional performance declines.

The present work failed to identify significant relationships between players' sleep quality, wellness perceptions and training indexes, although the dynamics of between-week changes in sleep accompanied the minimum and maximum values of both perceived fatigue and DOMS. Many scientific investigations have confirmed the direct impact of training intensity [53–55] and well-being [46,56] upon sleep measures in soccer. Here, the absence of meaningful correlations of sleep and all other dependent variables may be attributed to a potential lack of sensitivity provided by discrete, self-reported sleep quality metrics. As, for example, sleep questionnaire (subjective) responses do not often match actigraphy-derived or polysomnography (objective) parameters [57]. Nevertheless, when sudden changes are observed in both fatigue and DOMS (especially from week 7 to 8 where TS and TM also increased) attention is required because exacerbated levels of both fatigue and DOMS markers, as obtained by the Hooper Index method, may lead to impaired technical performance [58]. Interestingly, Douchet et al. [59] showed that a week with more accelerations and decelerations induced increased fatigue as observed in the present study by the greater RPE and Hooper index. The authors reported that the objectives of each training session during the week (i.e., technical, tactical, or physical) can contribute to defining the fatigue levels, this being an excellent way to manage the athletes' training load [59].

On the other hand, this is the period in which women soccer players slept better, at least according to their reports. This could be associated with a necessity to restore the systemic homeostasis as illustrated by the elevated tiredness and pain sensations [60].

Therefore, according to the current results, encouraging sleep hygiene strategies could be of particular interest across an intensified training period. Otherwise, the women players choose to extend their sleep opportunities to improve the recovery process and prevent occasions of poor performance in training sessions and official matches due to the high levels of fatigue and muscle soreness. Of note, when the training duration was shortened (e.g., weeks 2 and 7), TM and TS were also impacted in the same direction of declines, thus suggesting that it could be a reasonable strategy when it is necessary to adequately recover players. Notwithstanding, TM and TS peaked respectively in weeks 1 and 2, which is similar to research into male soccer [24,36] and might illustrate the challenge of female athletes to deal with training demands imposed at the beginning of a season.

A key finding of the present investigation was that variations of selected internal load parameters and wellness responses were independent of playing status. Positional role also had a minimal influence on the in-season fluctuations discussed above. One possible explanation for these results could be associated with very small subsample sizes of four to five players, which was not enough to demonstrate significant differences, as demonstrated by previous studies [25,61]. Locomotor capacity and the recovery states of women soccer players are sensitive to the accumulated load demands [62] implying that players' rotation might be needed to counteract such worst-case conditions (e.g., when training was supposedly intensified and/or extended; weeks 5 and 8). In this sense and despite there being players who were selected as starters more often, there should be changes in the coaches' choices depending on these intensified periods. This approach will help to reduce the differences between the playing status in the squad. Therefore, and despite there being players who are the preferred starters, regular changes in the main squad may occur as a function of such intensified periods, which helps to justify the lack of differences according to statuses. While the absence of differences in the analysis of starters versus reserve players is in agreement with the current evidence [24,50], the playing position had a significant influence in an almost matched male sample considering Hooper's Index measures [30]. In this sense, it is necessary to point out the possibility that, in women's soccer, the traditional position-related outputs might be more limited or even non-existent. To be explicit, fitness testing data of past studies indicated that aerobic power was similar across outfield playing positions in Norwegian elite women players [63]. Furthermore, research on college players from Division I in the United States demonstrated that lower limb power, change-of-direction [64], agility, speed and acceleration qualities [65] did not differ according to positional role. Recently, it was confirmed that some of these tests may reflect the in-game running outputs in first Division league Portuguese women soccer players [31], thus suggesting that a systematic discrepancy in game demands depending on player position would not be so evident in females, which could be observed in the study of Vescovi et al. [32], as compared to substantial between-position differences generally found in male counterparts [66,67]. More specific to the present context, external training load in a first Division Spanish women's team revealed no significant differences as a function of playing position (central defenders, wide defenders, central midfielders, wide midfielders and strikers) [68]. Results from a meta-analysis confirm the internal-external training load associations in team sports [10], thereby again making our result concerning training outcomes being independent of playing position compatible with the literature. In sum, it seems that modern soccer demands cause adjustments by the coaching staff in order to deliver relatively equalized training stimuli to women players regardless of their positional role and whether beginning the matches in the starting line-up or on the bench.

Finally, an inverse relationship existed between stress and RPE in the monitored population of women elite soccer players. It was the only significant correlation identified between s-RPE and Hooper Index categories, which contradicts two previous studies in male professional soccer players reporting a number of direct associations amongst RPE and Hooper Index indices [33,69]. However, the large negative s-RPE-stress correlation found here is something that provides preliminary evidence of the possible harmful consequences of higher stress levels on the perception of degree of efforts expended in practice sessions.

This inverse relationship seems to be in line with a recent study that reported higher values of RPE and Hooper index categories with the exception of stress during a higher intensity week [59]. This is in accordance with the notion of Paul et al. [70], where it cannot be discarded that high stress levels may promote a suboptimal psychological interaction with the question being asked relating to perceived effort. As a result, when collecting s-RPE in the context of women's soccer, it is important to consider the prominent interference of stress values that could potentially underestimate athletes' perceived training load demands.

Our present study provides coaches and technical staff with recent knowledge about the weekly variations of TM, TS and ACWR through s-RPE, and the Hooper index categories, in order to have all players available for competition. In addition, this study allows coaches to understand that all these measures vary according to the intensity and duration of the sessions throughout the week. Therefore, planning the structure and periodization of the objectives (i.e., technical, tactical, or physical) and the use of measures of intensity (e.g., RPE) are essential to inducing good adaptations in female athletes.

Limitations of the current study should not be overlooked and includes the fact that: (i) data collections encompassed a single-club, suggesting caution in attempts of extrapolating results to a variety of other teams/leagues; (ii) there was a relatively small sample size when the women athletes were grouped into distinct outfield playing positions; (iii) fatigue levels were measured only via self-reported ratings but not gold standard measures; (iv) non-concomitant consideration for situational factors that can modulate internal load responses during a season; and (v) a lack of match load information when interpreting training outcomes.

5. Conclusions

To conclude, the in-season spike in ACWR calculated through s-RPE may induce women soccer players into experiencing a nearby subsequent peak of perceived stress. Additionally, higher levels of fatigue occur with levels of stress and higher levels of DOMS occur with high levels of stress and fatigue. Reducing training duration could diminish s-RPE-derived strain and monotony indices. Importantly, any in-season variations across a 10-week period concerning internal load and perceived wellness seems independent of position and status in outfield players, although some caution should be taken into consideration. Finally, the higher the players' reported stress, the lower the observed s-RPE, thus possibly indicating a mutual interference of experienced stress levels on the assimilation of training loads by women professional soccer players.

Author Contributions: Conceptualization, R.F. and R.O.; methodology, R.F., J.P.B., H.N., F.M.C. and R.O.; software, R.F., H.N. and R.O.; validation, V.M.R., R.O. and J.P.B.; formal analysis, R.F., R.O. and A.D.M.; investigation, R.O., R.F., A.D.M., J.P.B. and F.M.C.; resources, R.O., R.F., A.D.M., J.P.B., V.M.R. and F.M.C.; data curation, R.F., R.O. and H.N.; writing—original draft preparation, R.O., J.P.B., L.H.P.V., F.M.C. and R.F.; writing—review and editing, R.O., L.H.P.V., R.F., A.D.M., J.P.B. and F.M.C.; visualization, R.O., R.F., J.P.B. and F.M.C.; supervision, R.O. and F.M.C.; project administration, R.O., J.P.B. and R.F.; funding acquisition, R.O. and J.P.B. All authors have read and agreed to the published version of the manuscript.

Funding: This research was funded by the Portuguese Foundation for Science and Technology, I.P., Grant/Award Number UIDP/04748/2020. Victor Machado Reis was funded by FCT—Fundação para a Ciência e Tecnologia (UID04045/2020). This work was also funded by Fundação para a Ciência e Tecnologia/ Ministério da Ciência, Tecnologia e Ensino Superior through national funds and when applicable co-funded EU funds under the project UIDB/50008/2020.

Institutional Review Board Statement: The study was conducted according to the guidelines of the Declaration of Helsinki and approved by the Ethics Committee of Polytechnic Institute of Santarém (252020Desporto).

Informed Consent Statement: Written informed consent was obtained from the participants to publish this paper.

Data Availability Statement: The data presented in this study are available on request from the corresponding author.

Acknowledgments: The authors would like to thank the team’s coaches and players for their cooperation during all data collection procedures. Luiz H Palucci Vieira: ongoing PhD fellowship provided by São Paulo Research Foundation—FAPESP, under process number [#2018/02965-7]. “The opinions, hypotheses and conclusions or recommendations expressed in this material are the responsibility of the authors and do not necessarily reflect the views of FAPESP”.

Conflicts of Interest: The authors declare no conflict of interest. The funders had no role in the design of the study; in the collection, analyses, or interpretation of data; in the writing of the manuscript, or in the decision to publish the results.

References

1. Miguel, M.; Oliveira, R.; Loureiro, N.; García-Rubio, J.; Ibáñez, S.J. Load measures in training/match monitoring in soccer: A systematic review. *Int. J. Environ. Res. Public Health* **2021**, *18*, 2721. [[CrossRef](#)]
2. Impellizzeri, F.M.; Marcora, S.M.; Coutts, A.J. Internal and External Training Load: 15 Years On. *Int. J. Sports Physiol. Perform.* **2019**, *14*, 270–273. [[CrossRef](#)]
3. Gabbett, T.J.; Nassis, G.P.; Oetter, E.; Pretorius, J.; Johnston, N.; Medina, D.; Rodas, G.; Myslinski, T.; Howells, D.; Beard, A.; et al. The athlete monitoring cycle: A practical guide to interpreting and applying training monitoring data. *Br. J. Sports Med.* **2017**, *51*, 1451–1452. [[CrossRef](#)]
4. Weaving, D.; Beggs, C.; Dalton-Barron, N.; Jones, B.; Abt, G. Visualizing the complexity of the athlete-monitoring cycle through principal-component analysis. *Int. J. Sports Physiol. Perform.* **2019**, *14*, 1304–1310. [[CrossRef](#)]
5. Oliveira, R.; Brito, J.P.; Martins, A.; Mendes, B.; Marinho, D.A.; Ferraz, R.; Marques, M.C. In-season internal and external training load quantification of an elite European soccer team. *PLoS ONE* **2019**, *14*, e0209393. [[CrossRef](#)]
6. Ball, S.; Halaki, M.; Orr, R. Movement Demands of Rugby Sevens in Men and Women: A Systematic Review and Meta-Analysis. *J. Strength Cond. Res.* **2019**, *33*, 3475–3490. [[CrossRef](#)]
7. Sánchez-Sáez, J.A.; Sánchez-Sánchez, J.; Martínez-Rodríguez, A.; Felipe, J.L.; García-Unanue, J.; Lara-Cobos, D. Global Positioning System Analysis of Physical Demands in Elite Women’s Beach Handball Players in an Official Spanish Championship. *Sensors* **2021**, *21*, 850. [[CrossRef](#)]
8. Clarke, A.C.; Anson, J.; Pyne, D. Physiologically based GPS speed zones for evaluating running demands in Women’s Rugby Sevens. *J. Sports Sci.* **2015**, *33*, 1101–1108. [[CrossRef](#)]
9. Bradley, P.S.; Vescovi, J.D. Velocity Thresholds for Women’s Soccer Matches: Sex Specificity Dictates High-Speed-Running and Sprinting Thresholds—Female Athletes in Motion (FAiM). *Int. J. Sports Physiol. Perform.* **2015**, *10*, 112–116. [[CrossRef](#)]
10. McLaren, S.J.; Macpherson, T.W.; Coutts, A.J.; Hurst, C.; Spears, I.R.; Weston, M. The Relationships Between Internal and External Measures of Training Load and Intensity in Team Sports: A Meta-Analysis. *Sport. Med.* **2018**, *48*, 641–658. [[CrossRef](#)]
11. Nobari, H.; Alves, A.R.; Haghighi, H.; Clemente, F.M.; Carlos-Vivas, J.; Pérez-Gómez, J.; Ardigò, L.P. Association between training load and well-being measures in young soccer players during a season. *Int. J. Environ. Res. Public Health* **2021**, *18*, 4451. [[CrossRef](#)] [[PubMed](#)]
12. Clemente, F.M.; Clark, C.; Castillo, D.; Sarmiento, H.; Nikolaidis, P.T.; Rosemann, T.; Knechtle, B. Variations of training load, monotony, and strain and dose-response relationships with maximal aerobic speed, maximal oxygen uptake, and isokinetic strength in professional soccer players. *PLoS ONE* **2019**, *14*, e0225522. [[CrossRef](#)]
13. Rabbani, A.; Kargarfard, M.; Castagna, C.; Clemente, F.M.; Twist, C. Associations between Selected Training Stress Measures and Fitness Changes in Male Soccer Players. *Int. J. Sports Physiol. Perform.* **2019**, *14*, 1050–1057. [[CrossRef](#)]
14. Impellizzeri, F.M.; Rampinini, E.; Coutts, A.J.; Sassi, A.; Marcora, S.M. Use of RPE-based training load in soccer. *Med. Sci. Sports Exerc.* **2004**, *36*, 1042–1047. [[CrossRef](#)]
15. Fanchini, M.; Ferraresi, I.; Petruolo, A.; Azzalin, A.; Ghielmetti, R.; Schena, F.; Impellizzeri, F.M. Is a retrospective RPE appropriate in soccer? Response shift and recall bias. *Sci. Med. Footb.* **2017**, *1*, 53–59. [[CrossRef](#)]
16. Foster, C.; Florhaug, J.A.; Franklin, J.; Gottschall, L.; Hrovatin, L.A.; Parker, S.; Doleshal, P.; Dodge, C. A New Approach to Monitoring Exercise Training. *J. Strength Cond. Res.* **2001**, *15*, 109–115. [[CrossRef](#)]
17. Foster, C. Monitoring training in athletes with reference to overtraining syndrome. *Med. Sci. Sports Exerc.* **1998**, *30*, 1164–1168. [[CrossRef](#)] [[PubMed](#)]
18. Murray, N.B.; Gabbett, T.J.; Townshend, A.D.; Blanch, P. Calculating acute: Chronic workload ratios using exponentially weighted moving averages provides a more sensitive indicator of injury likelihood than rolling averages. *Br. J. Sports Med.* **2017**, *51*, 749–754. [[CrossRef](#)]
19. Maupin, D.; Schram, B.; Canetti, E.; Orr, R. The Relationship Between Acute: Chronic Workload Ratios and Injury Risk in Sports: A Systematic Review. *Open Access J. Sport. Med.* **2020**, *11*, 51–75. [[CrossRef](#)]
20. Impellizzeri, F.M.; Ward, P.; Coutts, A.J.; Bornn, L.; Mccall, A. Training load and injury: Part 1. The devil is in the detail—challenges to applying the current research in the training load and injury field. *J. Orthop. Sport. Phys. Ther.* **2020**, *50*, 574–576. [[CrossRef](#)] [[PubMed](#)]

21. Impellizzeri, F.M.; Ward, P.; Coutts, A.J.; McCall, A. Training load and injury part 2: Questionable research practices hijack the truth and mislead well-intentioned clinicians. *J. Orthop. Sport. Phys. Ther.* **2020**, *50*, 577–584. [[CrossRef](#)]
22. Impellizzeri, F.M.; Tenan, M.S.; Kempton, T.; Novak, A.; Coutts, A.J. Acute: Chronic workload ratio: Conceptual issues and fundamental pitfalls. *Int. J. Sports Physiol. Perform.* **2020**, *15*, 907–913. [[CrossRef](#)]
23. Fernandes, R.; Oliveira, R.; Martins, A.; Paulo Brito, J. Internal training and match load quantification of one-match week schedules in female first league Portugal soccer. *Cuad. Psicol. del Deport.* **2021**, *21*, 126–138. [[CrossRef](#)]
24. Oliveira, R.; Vieira, L.H.P.; Martins, A.; Brito, J.P.; Nalha, M.; Mendes, B.; Clemente, F.M. In-season internal and external workload variations between starters and non-starters—a case study of a top elite European soccer team. *Medicina* **2021**, *57*, 645. [[CrossRef](#)]
25. Clemente, F.M.; Silva, R.; Castillo, D.; Arcos, A.L.; Mendes, B.; Afonso, J. Weekly load variations of distance-based variables in professional soccer players: A full-season study. *Int. J. Environ. Res. Public Health* **2020**, *17*, 3300. [[CrossRef](#)]
26. Duignan, C.; Doherty, C.; Caulfield, B.; Blake, C. Single-item self-report measures of team-sport athlete wellbeing and their relationship with training load: A systematic review. *J. Athl. Train.* **2020**, *55*, 944–953. [[CrossRef](#)]
27. Hooper, S.L.; Mackinnon, L.T. Monitoring Overtraining in Athletes: Recommendations. *Sport. Med.* **1995**, *20*, 321–327. [[CrossRef](#)]
28. McLean, B.D.; Coutts, A.J.; Kelly, V.; McGuigan, M.R.; Cormack, S.J. Neuromuscular, endocrine, and perceptual fatigue responses during different length between-match microcycles in professional rugby league players. *Int. J. Sports Physiol. Perform.* **2010**, *5*, 367–383. [[CrossRef](#)]
29. Fessi, M.S.; Noura, S.; Dellal, A.; Owen, A.; Elloumi, M.; Moalla, W. Changes of the psychophysical state and feeling of wellness of professional soccer players during pre-season and in-season periods. *Res. Sport. Med.* **2016**, *24*, 375–386. [[CrossRef](#)]
30. Clemente, F.M.; Mendes, B.; Nikolaidis, P.T.; Calvete, F.; Carriço, S.; Owen, A.L. Internal training load and its longitudinal relationship with seasonal player wellness in elite professional soccer. *Physiol. Behav.* **2017**, *179*, 262–267. [[CrossRef](#)]
31. Gonçalves, L.; Clemente, F.M.; Barrera, J.I.; Sarmiento, H.; González-Fernández, F.T.; Palucci Vieira, L.H.; Figueiredo, A.J.; Clark, C.C.T.; Carral, J.M.C. Relationships between Fitness Status and Match Running Performance in Adult Women Soccer Players: A Cohort Study. *Medicina* **2021**, *57*, 617. [[CrossRef](#)]
32. Vescovi, J.D.; Favero, T.G. Motion characteristics of women’s college soccer matches: Female athletes in motion (faim) study. *Int. J. Sports Physiol. Perform.* **2014**, *9*, 405–414. [[CrossRef](#)]
33. Moalla, W.; Fessi, M.S.; Farhat, F.; Noura, S.; Wong, D.P.; Dupont, G. Relationship between daily training load and psychometric status of professional soccer players. *Res. Sport. Med.* **2016**, *24*, 387–394. [[CrossRef](#)]
34. Nobari, H.; Oliveira, R.; Clemente, F.M.; Adsuar, J.C.; Pérez-Gómez, J.; Carlos-Vivas, J.; Brito, J.P. Comparisons of accelerometer variables training monotony and strain of starters and non-starters: A full-season study in professional soccer players. *Int. J. Environ. Res. Public Health* **2020**, *17*, 6547. [[CrossRef](#)] [[PubMed](#)]
35. Nobari, H.; Praça, G.M.; Clemente, F.M.; Pérez-Gómez, J.; Carlos Vivas, J.; Ahmadi, M. Comparisons of new body load and metabolic power average workload indices between starters and non-starters: A full-season study in professional soccer players. *Proc. Inst. Mech. Eng. Part P J. Sport. Eng. Technol.* **2020**, *235*, 105–113. [[CrossRef](#)]
36. Oliveira, R.; Martins, A.; Nobari, H.; Nalha, M.; Mendes, B.; Clemente, F.M.; Brito, J.P. In—season monotony, strain and acute/chronic workload of perceived exertion, global positioning system running based variables between player positions of a top elite soccer team. *BMC Sports Sci. Med. Rehabil.* **2021**, *13*, 1–10. [[CrossRef](#)]
37. Foster, C.; Hector, L.L.; Welsh, R.; Schrager, M.; Green, M.A.; Snyder, A.C. Effects of specific versus cross-training on running performance. *Eur. J. Appl. Physiol. Occup. Physiol.* **1995**, *70*, 367–372. [[CrossRef](#)]
38. Dalen-Lorentsen, T.; Bjørneboe, J.; Clarsen, B.; Vagle, M.; Fagerland, M.W.; Andersen, T.E. Does load management using the acute:chronic workload ratio prevent health problems? A cluster randomised trial of 482 elite youth footballers of both sexes. *Br. J. Sports Med.* **2021**, *55*, 108–114. [[CrossRef](#)]
39. Myers, N.L.; Aguilar, K.V.; Mexicano, G.; Farnsworth, J.L.; Knudson, D.; Kibler, W.B.E.N. The Acute:Chronic Workload Ratio Is Associated with Injury in Junior Tennis Players. *Med. Sci. Sports Exerc.* **2020**, *52*, 1196–1200. [[CrossRef](#)]
40. Impellizzeri, F.; Woodcock, S.; Coutts, A.J.; Fanchini, M.; McCall, A.; Vigotsky, A.D. Acute to random chronic workload ratio is ‘as’ associated with injury as acute to actual chronic workload ratio: Time to dismiss ACWR and its components. *SportRxiv* **2020**. [[CrossRef](#)]
41. Buchheit, M.; Mendez-Villanueva, A. Changes in repeated-sprint performance in relation to change in locomotor profile in highly-trained young soccer players. *J. Sports Sci.* **2014**, *32*, 1309–1317. [[CrossRef](#)] [[PubMed](#)]
42. Fanchini, M.; Rampinini, E.; Riggio, M.; Coutts, A.J.; Pecci, C.; McCall, A. Despite association, the acute: Chronic work load ratio does not predict non-contact injury in elite footballers. *Sci. Med. Footb.* **2018**, *2*, 108–114. [[CrossRef](#)]
43. Gabbett, T.J. The training—injury prevention paradox: Should athletes be training smarter and harder? *Br. J. Sports Med.* **2016**, *50*, 273–280. [[CrossRef](#)]
44. Xiao, M.; Nguyen, J.N.; Hwang, C.E.; Abrams, G.D. Increased Lower Extremity Injury Risk Associated With Player Load and Distance in Collegiate Women’s Soccer. *Orthop. J. Sport. Med.* **2021**, *9*, 1–8. [[CrossRef](#)]
45. Bowen, L.; Gross, A.S.; Gimpel, M.; Bruce-Low, S.; Li, F.-X. Spikes in acute:chronic workload ratio (ACWR) associated with a 5–7 times greater injury rate in English Premier League football players: A comprehensive 3-year study. *Br. J. Sports Med.* **2020**, *54*, 731–738. [[CrossRef](#)]
46. Watson, A.; Brickson, S.; Brooks, A.; Dunn, W. Subjective well-being and training load predict in-season injury and illness risk in female youth soccer players. *Br. J. Sports Med.* **2017**, *51*, 194–199. [[CrossRef](#)] [[PubMed](#)]

47. Curtis, R.M.; Huggins, R.A.; Benjamin, C.L.; Sekiguchi, Y.; Lepley, L.K.; Huedo-Medina, T.B.; Casa, D.J. Factors Associated With Noncontact Injury in Collegiate Soccer: A 12-Team Prospective Study of NCAA Division I Men's and Women's Soccer. *Am. J. Sport. Med.* **2021**, *49*, 3076–3087. [[CrossRef](#)] [[PubMed](#)]
48. Ishida, A.; Beaumont, J.S. Difference in Internal and External Workloads between Non-Injured and Injured Groups in Collegiate Female Soccer Players. *Int. J. Kinesiol. Sport. Sci.* **2020**, *8*, 26–32. [[CrossRef](#)]
49. Foster, I.; Byrne, P.J.; Moody, J.A.; Fitzpatrick, P.A. Monitoring Training Load Using the Acute: Chronic Workload Ratio in Non-Elite Intercollegiate Female Athletes. *ARC J. Res. Sport. Med.* **2018**, *3*, 22–28.
50. Martins, A.D.; Oliveira, R.; Brito, J.P.; Loureiro, N.; Querido, S.M.; Nobari, H. Intra-season variations in workload parameters in europe's elite young soccer players: A comparative pilot study between starters and non-starters. *Healthcare* **2021**, *9*, 977. [[CrossRef](#)] [[PubMed](#)]
51. Clement, D.; Ivarsson, A.; Tranaeus, U.; Johnson, U.; Stenling, A. Investigating the influence of intra-individual changes in perceived stress symptoms on injury risk in soccer. *Scand. J. Med. Sci. Sport.* **2018**, *28*, 1461–1466. [[CrossRef](#)]
52. Nédélec, M.; Halson, S.; Abaidia, A.; Ahmaidi, S.; Ne, M.; Dupont, G. Stress, Sleep and Recovery in Elite Soccer: A Critical Review of the Literature. *Sport. Med.* **2015**, *45*, 1387–1400. [[CrossRef](#)]
53. Costa, J.A.; Figueiredo, P.; Nakamura, F.Y.; Rebelo, A.; Brito, J. Monitoring Individual Sleep and Nocturnal Heart Rate Variability Indices: The Impact of Training and Match Schedule and Load in High-Level Female Soccer Players. *Front. Physiol.* **2021**, *12*. [[CrossRef](#)] [[PubMed](#)]
54. Clemente, F.M.; Afonso, J.; Costa, J.; Oliveira, R.; Pino-Ortega, J.; Rico-González, M. Relationships between Sleep, Athletic and Match Performance, Training Load, and Injuries: A Systematic Review of Soccer Players. *Healthcare* **2021**, *9*, 808. [[CrossRef](#)] [[PubMed](#)]
55. Figueiredo, P.; Costa, J.; Lastella, M.; Morais, J.; Brito, J. Sleep Indices and Cardiac Autonomic Activity Responses during an International Tournament in a Youth National Soccer Team. *Int. J. Environ. Res. Public Health* **2021**, *18*, 2076. [[CrossRef](#)]
56. Watson, A.; Brickson, S. Impaired Sleep Mediates the Negative Effects of Training Load on Subjective Well-Being in Female Youth Athletes. *Sport. Health A Multidiscip. Approach* **2018**, *10*, 244–249. [[CrossRef](#)] [[PubMed](#)]
57. Matthews, K.A.; Patel, S.R.; Pantesco, E.J.; Buysse, D.J.; Kamarck, T.W.; Lee, L.; Hall, M.H. Similarities and Differences in Estimates of Sleep Duration by Polysomnography, Actigraphy, Diary, and Self-reported Habitual Sleep in a Community Sample. *Sleep Health* **2018**, *4*, 96–103. [[CrossRef](#)]
58. Selmi, O.; Gonçalves, B.; Ouergui, I.; Levitt, D.E.; Sampaio, J.; Bouassida, A. Influence of Well-Being Indices and Recovery State on the Technical and Physiological Aspects of Play During Small-Sided Games. *J. Strength Cond. Res.* **2021**, *35*, 2802–2809. [[CrossRef](#)]
59. Douchet, T.; Humbertclaude, A.; Cometti, C.; Paizis, C.; Babault, N. Quantifying accelerations and decelerations in elite women soccer players during regular in-season training as an index of training load. *Sports* **2021**, *9*, 109. [[CrossRef](#)] [[PubMed](#)]
60. Dupuy, O.; Douzi, W.; Theurot, D.; Bosquet, L.; Dugué, B. An evidence-based approach for choosing post-exercise recovery techniques to reduce markers of muscle damage, Soreness, fatigue, and inflammation: A systematic review with meta-analysis. *Front. Physiol.* **2018**, *9*, 403. [[CrossRef](#)] [[PubMed](#)]
61. Clemente, F.M.; Silva, R.; Ramirez-Campillo, R.; Afonso, J.; Mendes, B.; Chen, Y.S. Accelerometry-based variables in professional soccer players: Comparisons between periods of the season and playing positions. *Biol. Sport* **2020**, *37*, 389–403. [[CrossRef](#)] [[PubMed](#)]
62. Williams, J.H.; Jaskowak, D.J. The effects of match congestion on gait complexity in female collegiate soccer players. *Transl. Sports Med.* **2019**, *2*, 130–137. [[CrossRef](#)]
63. Haugen, T.A.; Tønnessen, E.; Hem, E.; Leirstein, S.; Seiler, S. VO₂max Characteristics of Elite Female Soccer Players, 1989–2007. *Int. J. Sports Physiol. Perform.* **2014**, *9*, 515–521. [[CrossRef](#)]
64. Lockie, R.G.; Moreno, M.R.; Lazar, A.; Orjalo, A.J.; Giuliano, D.V.; Risso, F.G.; Davis, D.L.; Crelling, J.B.; Lockwood, J.R.; Jalilvand, F. The Physical and Athletic Performance Characteristics of Division I Collegiate Female Soccer Players by Position. *J. Strength Cond. Res.* **2018**, *32*, 334–343. [[CrossRef](#)]
65. Vescovi, J.D.; Brown, T.D.; Murray, T.M. Positional characteristics of physical performance in Division I college female soccer players. *J. Sport. Med. Phys. Fit.* **2006**, *46*, 221–226.
66. Henrique, L.; Vieira, P.; Carling, C.; Augusto, F.; Rodrigo, B.; Roberto, P.; Santiago, P. Match Running Performance in Young Soccer Players: A Systematic Review. *Sport. Med.* **2019**, *49*, 289–318. [[CrossRef](#)]
67. Sarmiento, H.; Marcelino, R.; Anguera, M.T.; Campaniço, J.; Matos, N. Match analysis in football: A systematic review. *J. Sports Sci.* **2014**, *32*, 1831–1843. [[CrossRef](#)]
68. Romero-Moraleda, B.; Nedergaard, N.J.; Morencos, E.; Ramirez-campillo, R.; Vanrenterghem, J.; Nedergaard, N.J.; Morencos, E. External and internal loads during the competitive season in professional female soccer players according to their playing position: Differences between training and competition. *Res. Sport. Med.* **2021**, *29*, 1–13. [[CrossRef](#)] [[PubMed](#)]
69. Selmi, O.; Ouergui, I.; Castellano, J.; Levitt, D.; Bouassida, A. Effect of an intensified training period on well-being indices, recovery and psychological aspects in professional soccer players. *Rev. Eur. Psychol. Appl.* **2020**, *70*, 100603. [[CrossRef](#)]
70. Paul, D.; Read, P.; Farooq, A.; Jones, L. Factors Influencing the Association Between Coach and Athlete Rating of Exertion: A Systematic Review and Meta- analysis. *Sport. Med.* **2021**, *7*, 1–20. [[CrossRef](#)]