

A super-Earth and a sub-Neptune orbiting the bright, quiet M3 dwarf TOI-1266

B.-O. Demory¹, F. J. Pozuelos^{2,3}, Y. Gómez Maqueo Chew⁴, L. Sabin⁵, R. Petrucci^{4,6,7}, U. Schroffenegger¹, S. L. Grimm¹, M. Sestovic¹, M. Gillon³, J. McCormac^{8,9}, K. Barkaoui^{3,10}, W. Benz¹, A. Bieryla¹¹, F. Bouchy¹², A. Burdanov^{13,14}, K. A. Collins¹¹, J. de Wit¹³, C. D. Dressing¹⁵, L. J. Garcia³, S. Giacalone¹⁵, P. Guerra¹⁶, J. Haldemann¹, K. Heng^{1,8}, E. Jehin², E. Jofré^{4,6,7}, S. R. Kane¹⁷, J. Lillo-Box¹⁸, V. Maigné¹, C. Mordasini¹⁹, B. M. Morris¹, P. Niraula¹³, D. Queloz²⁰, B. V. Rackham^{13,21}, A. B. Savel^{15,22}, A. Soubkiou¹⁰, G. Srdoc²³, K. G. Stassun²⁴, A. H. M. J. Triaud²⁵, R. Zambelli²⁶, G. Ricker²¹, D. W. Latham¹¹, S. Seager^{13,21,27}, J. N. Winn²⁸, J. M. Jenkins²⁹, T. Calvario-Velásquez⁵, J. A. Franco Herrera⁵, E. Colorado⁵, E. O. Cadena Zepeda⁵, L. Figueroa⁵, A. M. Watson⁴, E. E. Lugo-Ibarra⁵, L. Carigi⁴, G. Guisa⁵, J. Herrera⁵, G. Sierra Díaz⁵, J. C. Suárez^{30,31}, D. Barrado¹⁸, N. M. Batalha³², Z. Benkhaldoun¹⁰, A. Chontos³³, F. Dai³⁴, Z. Essack^{13,21}, M. Ghachoui¹⁰, C. X. Huang²¹, D. Huber³³, H. Isaacson^{15,35}, J. J. Lissauer²⁹, M. Morales-Calderón¹⁸, P. Robertson³⁶, A. Roy³⁴, J. D. Twicken^{29,37}, A. Vanderburg³⁸, and L. M. Weiss³³

(Affiliations can be found after the references)

Received 9 June 2020 / Accepted 20 July 2020

ABSTRACT

We report the discovery and characterisation of a super-Earth and a sub-Neptune transiting the bright ($K = 8.8$), quiet, and nearby (37 pc) M3V dwarf TOI-1266. We validate the planetary nature of TOI-1266 b and c using four sectors of TESS photometry and data from the newly-commissioned 1-m SAINT-EX telescope located in San Pedro Mártir (México). We also include additional ground-based follow-up photometry as well as high-resolution spectroscopy and high-angular imaging observations. The inner, larger planet has a radius of $R = 2.37^{+0.16}_{-0.12} R_{\oplus}$ and an orbital period of 10.9 days. The outer, smaller planet has a radius of $R = 1.56^{+0.15}_{-0.13} R_{\oplus}$ on an 18.8-day orbit. The data are found to be consistent with circular, co-planar and stable orbits that are weakly influenced by the 2:1 mean motion resonance. Our TTV analysis of the combined dataset enables model-independent constraints on the masses and eccentricities of the planets. We find planetary masses of $M_p = 13.5^{+11.0}_{-9.0} M_{\oplus}$ ($<36.8 M_{\oplus}$ at $2-\sigma$) for TOI-1266 b and $2.2^{+2.0}_{-1.5} M_{\oplus}$ ($<5.7 M_{\oplus}$ at $2-\sigma$) for TOI-1266 c. We find small but non-zero orbital eccentricities of $0.09^{+0.06}_{-0.05}$ (<0.21 at $2-\sigma$) for TOI-1266 b and 0.04 ± 0.03 (<0.10 at $2-\sigma$) for TOI-1266 c. The equilibrium temperatures of both planets are of 413 ± 20 and 344 ± 16 K, respectively, assuming a null Bond albedo and uniform heat redistribution from the day-side to the night-side hemisphere. The host brightness and negligible activity combined with the planetary system architecture and favourable planet-to-star radii ratios makes TOI-1266 an exquisite system for a detailed characterisation.

Key words. instrumentation: detectors – planets and satellites: detection

1. Introduction

The science of exoplanets has been historically driven by dedicated astronomical observations. Currently, the Transiting Exoplanet Survey Satellite (TESS; Ricker et al. 2015) is leading the discovery of multi-planetary transiting systems with relatively small planets (i.e. sub-Neptune or smaller), orbiting around bright M-dwarf stars in the solar neighbourhood (e.g. Günther et al. 2019; Jenkins et al. 2019; Kostov et al. 2019; Cloutier et al. 2020). Their brightness allows for a detailed characterisation of small planets, and, in the near future, a glimpse into their atmospheric composition with the James Webb Space Telescope (JWST). Furthermore, when multiple transit-like signals are detected from a single star, the signals are likely to be genuine as opposed to false positives such as eclipsing binaries (Latham et al. 2011; Lissauer et al. 2012a; Morton et al. 2016). In some cases, in particular where the planets are near resonant orbits, time-series photometry alone not only allows for the measurement of the planet size, but also places dynamical constraints on the planet mass (Holman 2005; Agol et al. 2005). Measuring

the planet mass and radius allows for the derivation of the bulk density, thus constraining planetary structure models (e.g. Dorn et al. 2017).

There are more than 3000 transiting exoplanets known to date¹, including 499 planetary systems with more than one detected transiting planet. This large sample of transiting exoplanets allows for in-depth exploration of the distinct exoplanet populations. One such study by Fulton et al. (2017) identified a bi-modal distribution for the sizes of super-Earth and sub-Neptune *Kepler* exoplanets, with a peak at $\sim 1.3 R_{\oplus}$ and another at $\sim 2.4 R_{\oplus}$. The interval between the two peaks is called the radius valley and it is typically attributed to the stellar irradiation received by the planets, with more irradiated planets being smaller due to the loss of their gaseous envelopes. Studying more than one super-Earth or sub-Neptune planet in a single system allows for tighter constraints on formation models (e.g. Owen & Campos Estrada 2020; Kubyskhina et al. 2019) and thus the exploration of the effects of other physical

¹ <http://exoplanet.eu/> retrieved on 10 Aug 2020.

Table 1. Ground-based time-series photometric observations of TOI-1266.

Date (UT)	Filter	Facility	Exp. time [s]	Notes
25 Dec 2019	<i>Ic</i>	OAA-0.4m	160	b full
29 Jan 2020	<i>z'</i>	SAINT-EX-1m	12	c partial
29 Feb 2020	<i>z'</i>	SAINT-EX-1m	12	b full
21 Mar 2020	<i>z'</i>	TRAPPIST-N-0.6m	15	b full
21 Mar 2020	<i>r'</i>	Artemis-1m	10	b partial
01 Apr 2020	<i>V</i>	TRAPPIST-N-0.6m	60	b partial
23 Apr 2020	TESS	Kotizarovci-0.3m	50	b full
23 Apr 2020	clear	ZRO-0.4m	200	b full

processes such as the core and envelope mass distribution (e.g. [Modirrousta-Galian et al. 2020](#)).

Here we present the discovery and characterisation of the planetary system TOI-1266, which was first identified from the TESS photometry². We confirmed the planetary nature of the transits through ground-based follow-up observations, including time-series photometry, high-angular resolution images, spectroscopy, and archival imagery.

The paper is structured as follows. Section 2 describes all observations. The stellar characterisation of the planet host is described in Sect. 3. The validation of the transit signals in the light curves is presented in Sect. 4. The search for transit signals and the analysis of the light curves to derive physical properties are presented in Sect. 5. We also include a stability analysis and mass constraints from a dynamical analysis in Sect. 5.2. Finally, in Sect. 6, we discuss the implications for the formation and evolution of the TOI-1266 planetary system given the measured planet radii, orbital periods, and constraints on the masses, as well as prospects for atmospheric characterisation. A summary of our results and their implications is presented in Sect. 7.

2. Observations

In this section, we present all the observations of TOI-1266 obtained with TESS and ground-based facilities. A summary of all ground-based time-series photometric observations of TOI-1266 is shown in Table 1.

2.1. TESS photometry

TOI-1266 is a late-type star with a measured parallax that is part of the TESS Candidate Target List ([Stassun et al. 2018](#)). It was observed by TESS with 2-min-cadence in sectors 14–15 (18 July to 11 Sep 2019) and 21–22 (21 Jan to 18 Mar 2020). TOI-1266’s astrometric and photometric properties from the literature are reported in Table 2. The time-series observations of TOI-1266 were processed with the TESS Science Processing Operations Center (SPOC) pipeline ([Jenkins 2002](#); [Jenkins et al. 2016, 2017](#)), which resulted in the detection of two periodic transit signals: TOI-1266.01 and .02, the latter being at the detection limit using sectors 14-15 data alone, thus requiring additional data to strengthen that signal.

We retrieved the Presearch Data Conditioning Simple Aperture Photometry (PDC-SAP; [Stumpe et al. 2012, 2014](#); [Smith et al. 2012](#)) from the Mikulski Archive for Space Telescopes and removed all datapoints flagged as “bad quality”. We identified 819/19337 such datapoints for sector 14, 912/18757 for sector 15,

² During the review of this paper, we were made aware of a preprint by [Stefansson et al. \(2020\)](#) that also reports on the discovery of the TOI-1266 system.

Table 2. TOI-1266 stellar astrometric and photometric properties.

Parameter	Value	Source
<i>Target designations</i>		
TIC	467 179 528	1
2MASS	J13115955+6550017	2
UCAC 4	780-025091	3
<i>Gaia</i> DR2	1678074272650459008	4
<i>Photometry</i>		
TESS	11.040 ± 0.007	1
<i>B</i>	14.58 ± 0.05	3
<i>V</i>	12.94 ± 0.05	3
<i>Gaia</i>	12.1222 ± 0.0002	4
<i>u</i>	16.527 ± 0.007	5
<i>g</i>	14.950 ± 0.005	5
<i>r</i>	12.584 ± 0.002	5
<i>i</i>	11.600 ± 0.001	5
<i>z</i>	11.608 ± 0.005	5
<i>J</i>	9.71 ± 0.02	2
<i>H</i>	9.07 ± 0.03	2
<i>K</i>	8.84 ± 0.02	2
WISE 3.4 μm	8.72 ± 0.02	6
WISE 4.6 μm	8.61 ± 0.02	6
WISE 12 μm	8.50 ± 0.02	6
WISE 22 μm	8.23 ± 0.21	6
<i>Astrometry</i>		
RA (J2000)	13 11 59.56	4
Dec (J2000)	+65 50 01.70	4
RA PM (mas yr ⁻¹)	−150.652 ± 0.041	4
Dec PM (mas yr ⁻¹)	−25.368 ± 0.039	4
Parallax (mas)	27.7397 ± 0.0226	4

References. 1. [Stassun et al. \(2018\)](#), 2. [Cutri et al. \(2003\)](#), 3. [Zacharias et al. \(2013\)](#), 4. [Brown et al. \(2018\)](#), 5. [Alam et al. \(2015\)](#), 6. [Cutri & et al. \(2013\)](#).

1074/19694 for sector 21, and a larger count (5652/19579) for sector 22. Figure 1 shows the TESS fields of view and apertures used for TOI-1266 over each of the four sectors with the location of nearby *Gaia* DR2 sources superimposed.

2.2. SAINT-EX photometry

We obtained ground-based photometric time-series observations of TOI-1266 from the SAINT-EX Observatory² (Search And characterIsatioN of Transiting EXoplanets), which was

² https://www.saintex.unibe.ch/saint_ex_observatory/

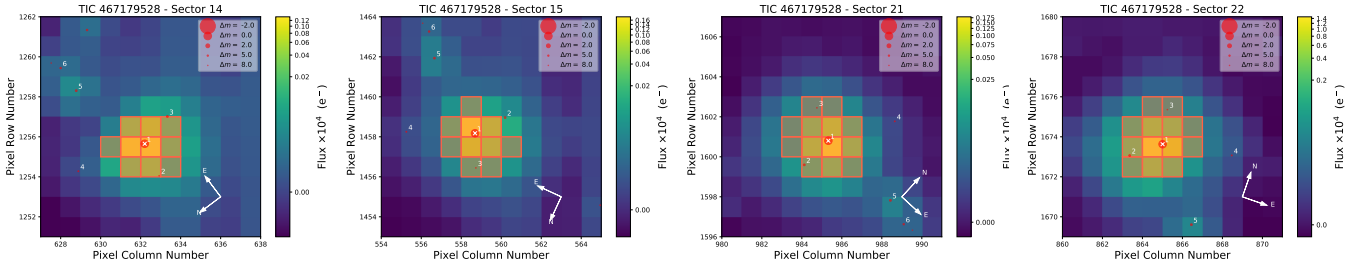


Fig. 1. TESS target pixel files (TPFs) of the four sectors that observed TOI-1266. The plots were created with `tpfplotter`⁴ (Aller et al. 2020). The apertures used to extract the photometry (Twicken et al. 2010; Morris et al. 2017) by the SPOC pipeline are shown as red shaded regions. The *Gaia* DR2 catalogue (Gaia Collaboration 2018) is overlaid, with all sources up to 8 magnitudes in contrast with TOI-1266 are shown as red circles. We note that the symbol size scales with the magnitude contrast.

commissioned in March 2019. SAINT-EX is a 1-m F/8 Ritchey-Chrétien telescope built by the ASTELCO company and uses a similar design to the telescopes of the SPECULOOS Southern Observatory (Delrez et al. 2018; Jehin et al. 2018). SAINT-EX is located at the Observatorio Astronómico Nacional, in the Sierra de San Pedro Mártir in Baja California, México (31.04342 N, 115.45476 W) at 2780 m altitude. The telescope is installed on an ASTELCO equatorial NTM-1000 mount equipped with direct-drive motors, which enables operations without meridian flip. The telescope is installed in a 6.25-m wide dome built by the Gambato company. In terms of mount performance, SAINT-EX typically achieves a RMS better than 3'' relative to the pointing model and a tracking accuracy – without autoguiding – better than 2'' over 15-min timescales. To improve this figure further, SAINT-EX uses the DONUTS autoguiding software (McCormac et al. 2013), which increases the guiding precision to 0.2'' RMS or better that is less than a pixel. SAINT-EX is equipped with an Andor iKon-L camera that integrates a deep-depletion e2v 2K × 2K CCD chip with a BEX2-DD coating that is optimised for the near infrared (NIR). The filter wheel includes the Sloan *ugriz'* broad-band filters, as well as special blue-blocking (transmittance >90% beyond 500 nm) and NIR (transmittance >95% beyond 705 nm) filters. The detector gives a field of view of 12' × 12' with 0.34'' per pixel.

SAINT-EX operations are robotic and the data reduction and analysis are automated by a custom pipeline PRINCE (Photometric Reduction and In-depth Nightly Curve Exploration) that ingests the raw science and calibration frames and produces light curves using differential photometry. The PRINCE pipeline performs standard image reduction steps, applying bias, dark, and flat-field corrections. Astrometric calibration is conducted using *Astrometry.net* (Lang et al. 2010) to derive correct world coordinate system (WCS) information for each exposure. *Photutils* star detection (Bradley et al. 2019) is run on a median image of the whole exposure stack to create a pool of candidate stars in the field of view. Stars whose peak value in the largest aperture is above the background by a certain threshold, defined by an empirical factor times the median background noise of the night, are kept as reference stars for the differential photometric analysis. From the WCS information and the detected stars' coordinates, the pipeline runs centroiding, aperture and annulus photometry on each detected star from the common pool, using *LMFit* (Newville et al. 2014) and *Astropy* (Astropy Collaboration 2013, 2018), and repeats this for each exposure to obtain the measured lightcurves for a list of apertures. The measured lightcurves for each aperture are corrected for systematics using either a PCA approach (Pedregosa et al.

2011) or a simple differential photometry approach that corrects a star's lightcurve by the median lightcurve of all stars in the pool except for the target star.

SAINT-EX observed one transit of each planet of the TOI-1266 system in early 2020. The observing strategy was to use the *z'* filter with a slightly-defocused 12-s exposure time to mitigate shutter noise and scintillation. A partial transit of TOI-1266.02 was observed on 29 January 2020 from 7:36 to 12:05 UT. A full transit of TOI-1266.01 was then observed on 29 February 2020 from 6:16 to 11:03 UT. We reduced both datasets with PRINCE using differential aperture photometry. We corrected our differential light curves for variations in both the airmass and the full width at half maximum (FWHM) along both horizontal and vertical axes on the detector. This correction is performed simultaneously to the transit fit in our MCMC framework detailed in Sect. 5.1.2.

2.3. TRAPPIST-North photometry

We used the 60-cm TRAPPIST-North telescope located at Oukaimeden Observatory in Morocco (Jehin et al. 2011; Gillon et al. 2013; Barkaoui et al. 2019) to observe one full and one partial transit of TOI-1266.01. TRAPPIST-North is equipped with a thermoelectrically cooled 2K × 2K Andor iKon-L BEX2-DD CCD camera with a pixel scale of 0.6'' and a field of view of 20' × 20'. We used the TESS Transit Finder tool, which is a customised version of the Tapir software package (Jensen 2013), to schedule the photometric time-series. Data reduction and photometric analysis were performed with the *TRAPPHOT* pipeline developed in IRAF as described in Gillon et al. (2013). The first transit was observed on 21 March 2020 in the Sloan-*z'* filter with an exposure time of 15 s. We took 476 raw images and performed aperture photometry in an uncontaminated aperture of 6.5 pixels (4.0'') and a FWHM of 2.6''. The second transit was observed on 01 April 2020 in the Johnson-*V* filter with an exposure time of 60 s. We took 338 raw images and we performed aperture photometry in an uncontaminated aperture of 8.1 pixels (5.0'') and a FWHM of 3.4''. During that second observation of TOI-1266, the telescope underwent a meridian flip at HJD 2 458 941.5431, and we noticed the presence of thin clouds during the ingress.

2.4. Artemis photometry

One partial transit of TOI-1266.01 was acquired on 21 March 2020 with the Artemis telescope, which constitutes the SPECULOOS-North facility located at the Teide Observatory (Canary Islands, Spain). The Artemis telescope is a twin of the SPECULOOS-South and SAINT-EX telescopes, which are all operated similarly and utilise Andor iKon-L cameras with

³ <https://github.com/jlillo/tpfplotter>

e2v 2K × 2K deep-depletion CCDs. We acquired 668 images in the Sloan-*r'* filter with an exposure time of 10 s. Data reduction consisted of standard calibration steps and subsequent aperture photometry with the *TRAPPHOT* pipeline. Best comparison stars and optimum aperture size were selected on the basis of the minimisation of the out-of-transit scatter of the light curve.

2.5. Observatori Astronòmic Albanyà

A full transit of TOI-1266 b was observed in I_C band on 25 Dec. 2019 from Observatori Astronòmic Albanyà (OAA) in Girona, Spain. The 0.4 m telescope is equipped with a 3056 × 3056 Moravian G4-9000 camera with an image scale of 1''.44 pixel⁻¹, resulting in a 36' × 36' field of view. The images were calibrated and the photometric data were extracted using the AstroImageJ (AIJ) software package (Collins et al. 2017).

2.6. Kotizarovci observatory

A full transit of TOI-1266 b was observed in Baader R long-pass 610 nm band on 23 Apr. 2020 from Kotizarovci Observatory near Viskovo, Croatia. The 0.3 m telescope is equipped with a 765 × 510 SBIG ST7XME camera with an image scale of 1''.2 pixel⁻¹ resulting in a 15.3' × 10.2' field of view. The images were calibrated and the photometric data were extracted using AIJ.

2.7. ZRO observatory

A full transit of TOI-1266 b was observed without filter on 23 Apr. 2020 from the Zambelli Roberto Observatory (ZRO) in Liguria, Italy. The 0.4-m telescope is equipped with a 3072 × 2048 SBIG STXL-6303E camera with an image scale of 1''.16 pixel⁻¹ resulting in a 49' × 33' field of view. The images were calibrated and the photometric data were extracted using AIJ.

2.8. TRES spectroscopy

We obtained two “reconnaissance” spectra with the Tillinghast Reflector Echelle Spectrograph (TRES; Furesz 2008) instrument mounted on the Fred Lawrence Whipple Observatory’s 1.5-m telescope on 25 January 2020 and 30 January 2020. The TRES wavelength coverage spans 385 to 910 nm and the resolving power is 44 000. The purpose of these spectra is to discard obvious false positive scenarios and provide basic constraints on the stellar host. The two TRES spectra were extracted using the procedures outlined in Buchhave et al. (2010). Radial velocities were determined using special procedures developed by Jonathan Irwin for the analysis of spectra of M dwarfs, rather than the standard pipeline analysis, which was optimised for Solar-type stars, and uses the wavelength region near the Mg b features at 519 nm and a library of calculated templates to yield absolute velocities. Irwin’s tools use an observed spectrum of Barnard’s star as the template, and the wavelength region near 715 nm that contains TiO features rich in radial-velocity information. For M dwarfs, the S/N per resolution element is significantly stronger at 715 nm, in this case 30, compared to 12 at 519 nm. The two TRES observations were obtained at phases 16.79 and 17.25 of the TESS ephemeris for the inner planet (i.e. at opposite quadratures for a circular orbit), and yielded absolute velocities of −41.511 and −41.662 km s⁻¹, thus ruling out a stellar companion or brown dwarf orbiting TOI-1266, as the source of the transits for the inner planet.

2.9. HIRES spectroscopy

We obtained a single spectrum with the HIRES (Vogt et al. 1994) instrument mounted on the Keck-I 10-m telescope on 15 December 2019. HIRES has a wavelength coverage of 390 to 900 nm and a resolving power of 50 000. The spectrum with which we conducted these analyses has a S/N per resolution element of 80.

2.10. High-angular resolution imaging

We used high-angular resolution imaging to rule out false-positive signals caused by unresolved blended stars in the time-series photometry. This is particularly important for the TESS light curves, given that the TESS pixels are ~21''.

2.10.1. AstraLux at Calar Alto

TOI-1266 was observed on 30 October 2019 with the AstraLux instrument (Hormuth et al. 2008), a high-spatial resolution camera installed at the 2.2-m telescope of the Calar Alto Observatory (Almería, Spain). This fast-readout camera uses the lucky-imaging technique (Fried 1978) by obtaining thousands of short-exposure frames to subsequently select a small percentage of them showing the best Strehl ratio (Strehl 1902), and combining them into a final image. We observed this target using the Sloan Digital Sky Survey *z* filter (SDSS*z*), which provides the best resolution and contrast capabilities for the instrument (Hormuth et al. 2008), and obtained 35 000 frames with 20 ms exposure time and a 6'' × 6'' field-of-view. The datacube was subsequently reduced using the observatory pipeline (Hormuth et al. 2008), and we used a 10% selection rate for the best frames to obtain a final high-resolution imaging with a total exposure time of 70 s. We then computed the sensitivity curve by using our own *astrasens* package⁴, following the procedure described in Lillo-Box et al. (2012, 2014). The image allows us to discard stellar companions with magnitude contrasts down to $\Delta m = 4$ at 0.2'' (corresponding to 7.2 au at the distance of this system), and hence, establish a maximum contamination in the planet transit better than 3%. The AstraLux contrast curve is shown in Fig. 2.

2.10.2. ShARCS

TOI-1266 was observed on 12 November 2019 with the adaptive-optics-assisted ShARCS camera (McGurk et al. 2014; Gavel et al. 2014) on the Shane 3-m telescope at Lick Observatory. We collected observations in both the K_s and J filters with exposure times of 6 and 12 s, respectively. Observations were performed with a four-point dither pattern, with the distance between subsequent exposures being 4.00'' on a side.

We reduced our data with SImMER (Savel, Hirsch et al., in prep.), an open-source, Python-based pipeline⁵. Prior to aligning images, the pipeline implements standard dark-subtraction and flat-fielding. To align our science images for each target, we adapted methods from Morzinski et al. (2015), performing rotations about points within a search radius and minimising the summed residuals from the original image. To determine our sensitivity to undetected stellar companions to TOI-1266, we calculated the minimum detectable companion brightness at increasing angular separations from the target. We performed this step by constructing concentric annuli centred on TOI-1266 and determining the mean and standard deviation of the flux within each annulus (e.g. Marois et al. 2006, Nielsen et al. 2008,

⁴ <https://github.com/jlillo/astrasens>

⁵ <https://github.com/arjunsavel/SImMER>

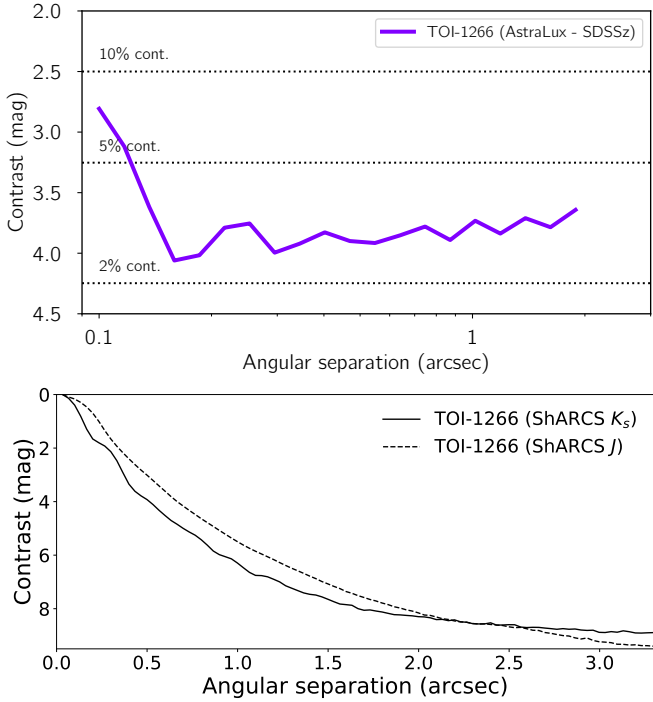


Fig. 2. Contrast curves for TOI-1266 resulting from high-angular resolution imaging. *Top:* 5σ contrast curve of the AstraLux image and contamination levels (horizontal dotted lines) obtained in SDSS z filter. *Bottom:* 5σ contrast curves computed from ShARCS images of TOI-1266 taken in the K_s (solid line) and J (dashed line) filters.

Janson et al. 2011, Wang et al. 2015). We subsequently took our contrast curve to be 5σ above the mean. Through this method, we find that we are sensitive in the K_s band to companions 4 magnitudes fainter than the host beyond a separation of $0.51''$ and companions 8 magnitudes fainter than the host beyond a separation of $1.67''$. The full contrast curves are shown in Fig. 2.

3. Stellar characterisation

3.1. Spectroscopic analysis

3.1.1. TRES spectroscopy

We used the TRES spectra to derive initial stellar parameters employing the method described in Maldonado et al. (2015). Briefly, the effective temperature, spectral type and iron abundance were computed from the measurements of pseudo-equivalent widths of several spectral features. This analysis yields $T_{\text{eff}} = 3570 \pm 100$ K, spectral type M3, and $[\text{Fe}/\text{H}] = -0.03 \pm 0.18$ dex. We also used the derived temperature and metallicity as inputs in the empirical relations by Maldonado et al. (2015) to derive the stellar mass ($M_{\star} = 0.48 \pm 0.10 M_{\odot}$), the radius ($R_{\star} = 0.47 \pm 0.10 R_{\odot}$), and the surface gravity ($\log g = 4.78 \pm 0.10$ dex).

3.1.2. HIRES spectroscopy

We analysed the HIRES spectrum with SpecMatch-Empirical (Yee et al. 2017), which classifies stars by comparing their optical spectra to a library of spectra of well-characterised stars. With this technique, we recovered $T_{\text{eff}} = 3548 \pm 70$ K, $[\text{Fe}/\text{H}] = -0.24 \pm 0.09$ dex, and $R_{\star} = 0.43 \pm 0.10 R_{\odot}$, confirming the dwarf nature of the host star. Using the spectrum, we also ruled out

double-lined spectroscopic binaries with contamination ratios down to 1% (Kolbl et al. 2014), greatly constraining the parameter space within which false positive scenarios can exist.

3.2. SED analysis

As an independent check on the derived stellar parameters, we performed an analysis of the broadband spectral energy distribution (SED) together with the *Gaia* DR2 parallax in order to determine an empirical measurement of the stellar radius, following the procedures described in Stassun & Torres (2016); Stassun et al. (2017, 2018). We obtained the $BVgri$ magnitudes from APASS, the JHK_s magnitudes from 2MASS, the W1–W4 magnitudes from WISE, and the $GG_{BP}GRP$ magnitudes from *Gaia* (see Table 2). In addition, we obtained the NUV flux from *GALEX* in order to assess the level of chromospheric activity, if any. Together, the available photometry spans the full stellar SED over the wavelength range $0.2\text{--}22 \mu\text{m}$ (see Fig. 3).

We performed a fit using NextGen stellar atmosphere models (Hauschildt et al. 1999), with the fitted parameters being the effective temperature (T_{eff}) and metallicity ($[\text{Fe}/\text{H}]$). We set the extinction (A_V) to zero due to the star being nearby. We used the T_{eff} from the TIC (Stassun et al. 2018) as an initial guess. The broadband SED is largely insensitive to the surface gravity ($\log g$), thus we simply adopted the value from the TIC. The resulting fit is satisfactory (Fig. 3) with a reduced χ^2 of 1.9. The best-fit parameters are $T_{\text{eff}} = 3600 \pm 150$ K and $[\text{Fe}/\text{H}] = -0.5 \pm 0.5$ dex. Integrating the (unreddened) model SED gives the bolometric flux at Earth of $F_{\text{bol}} = 6.72 \pm 0.16 \times 10^{-10}$ erg s $^{-1}$ cm $^{-2}$. Taking the F_{bol} and T_{eff} together with the *Gaia* DR2 parallax, adjusted by $+0.08$ mas to account for the systematic offset reported by Stassun & Torres (2018), gives the stellar radius as $R^* = 0.420 \pm 0.037 R_{\odot}$. Finally, estimating the stellar mass from the empirical relations of Mann et al. (2019) gives $M^* = 0.45 \pm 0.03 M_{\odot}$, which with the empirical radius measurement gives the mean stellar density as $\rho_{\star} = 8.7 \pm 2.3$ g cm $^{-3}$.

In a separate global fit, we used the EXOFASTv2⁶ analysis package (Eastman et al. 2019) to derive the stellar parameters. EXOFASTv2 simultaneously utilises the SED, MIST stellar models (Dotter 2016; Choi et al. 2016), *Gaia* DR2 parallax and enforces an upper limit on the extinction of $A_V = 0.04185$ from the Schlafly & Finkbeiner (2011) dust maps. In addition, we set Gaussian priors on T_{eff} and $[\text{Fe}/\text{H}]$ from the spectral analysis, presented in Sect. 3.1. The resulting EXOFASTv2 fit provides values for $T_{\text{eff}} = 3533 \pm 45$ K, $R^* = 0.428 \pm 0.012 R_{\odot}$, and $M^* = 0.447 \pm 0.023 M_{\odot}$.

In Table 3, we present a summary of the values of the stellar parameters obtained from the different instruments and methods previously described. We also added stellar properties derived in this work. We adopt the mass and metallicity values from the SED+Mann analysis as priors in our global analysis, because it assumes only a simple Gaussian prior on the *Gaia* parallax, and thus, is completely empirical.

Additionally, using the radial velocity determined from the HIRES data (-41.71 ± 0.10 km s $^{-1}$), and the proper motion and parallax from *Gaia* DR2, we derived Galactic space-velocity components (U, V, W) = ($3.99 \pm 0.03, -43.53 \pm 0.06, -32.36 \pm 0.08$) km s $^{-1}$, following the procedure detailed in Jofré et al. (2015). From the space-velocity components and the membership formulation by Reddy et al. (2006), we find that TOI-1266 has a probability of $\sim 96\%$ of belonging to the thin disc population.

⁶ <https://github.com/jdeast/EXOFASTv2>

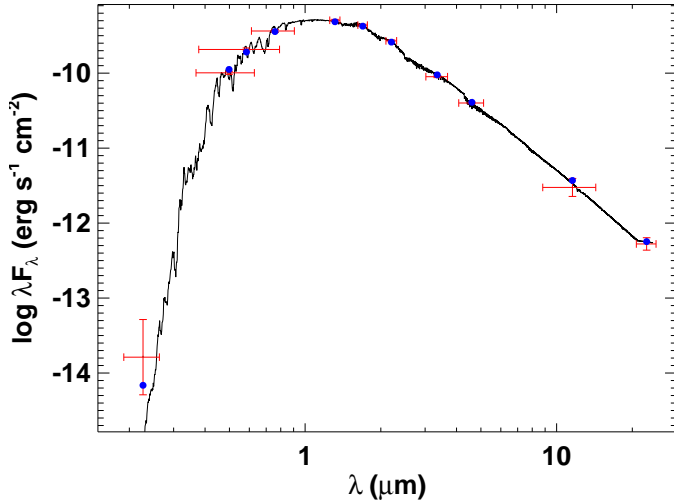


Fig. 3. Spectral energy distribution (SED) of TOI-1266. Red symbols represent the observed photometric measurements, where the horizontal bars represent the effective width of the passband. Blue symbols are the model fluxes from the best-fit NextGen atmosphere model (black).

Table 3. Stellar characterisation.

Parameter	Value	Source
T_{eff}/K	3548 ± 70	HIRES
	3600 ± 150	SED+Mann
	3533 ± 45	EXOFASV2
	3570 ± 100	TRES
[Fe/H]	-0.24 ± 0.09	HIRES
	-0.5 ± 0.5	SED+Mann
	-0.03 ± 0.18	TRES
M_*/M_{\odot}	0.45 ± 0.03	Mann
	0.447 ± 0.023	EXOFASV2
	0.48 ± 0.10	TRES
R_*/R_{\odot}	0.43 ± 0.02	HIRES
	0.420 ± 0.037	SED+Mann
	0.428 ± 0.012	EXOFASV2
	0.43 ± 0.10	TRES
	0.42 ± 0.02	This work
$\log g / \text{dex}$	4.85 ± 0.08	SED+Mann
	4.826 ± 0.024	EXOFASV2
	4.78 ± 0.10	TRES
	4.85 ± 0.05	This work
$\rho_*/g \text{ cm}^{-3}$	8.7 ± 2.3	SED+Mann
	$8.04^{+0.66}_{-0.55}$	EXOFASV2
	8.99 ± 1.25	This work
Spectral type	M3	TRES
$F_{\text{bol}} / \text{rm erg s}^{-1} \text{ cm}^{-2}$	$(6.72 \pm 0.16) \times 10^{-10}$	SED+Mann

Notes. SED+Mann use the empirical relations of Mann et al. (2019). Parameters in bold are the adopted stellar values. We use the SED+Mann mass and metallicity as priors in our global analysis presented in Sect. 5.1.2, where we also derive the other parameters that appear in bold.

3.3. Activity

We first searched for signs of stellar variability in the TESS PDC-SAP data from Sect. 2.1, as one might expect given the prevalence of activity in M dwarfs (e.g. Newton et al. 2016, 2018). We performed a visual inspection of the light curve and found no hints of rotational modulation nor evidence of flaring activity. We then used the tools provided by the Lightkurve Python package (Lightkurve Collaboration 2018) to compute the Lomb-Scargle periodogram (Scargle 1982) for all the photometric data and for the data of each sector, without detecting any significant peak that might indicate periodic variability. To check that the variability was not removed by the PDC pipeline, we also performed an independent data reduction from the TESS Target Pixel Files (TPFs). We used a circular aperture, tracking the star on each image, and we stitched the observations from sectors 14, 15, 21 and 22 together to produce a new lightcurve. We computed a Lomb-Scargle periodogram, and we additionally fit a Gaussian process model with a quasi-periodic kernel (see e.g. Aigrain et al. 2016). We did not find any periodic variation consistent with stellar variability, however. This could result from a rotation period much longer than the 120 day observation period, or a small spot coverage.

Within the total ~ 120 days of TESS observations across all four sectors, we did not observe any flares from the star, consistent with an inactive early M dwarf (Hawley et al. 2014). We note that the radius and inferred mass are compatible with an uninflated early M-dwarf, and the NUV photometry is consistent with an unspotted photosphere and negligible chromospheric activity. In summary, TOI-1266 appears to be an old, inactive, slightly metal-poor early M dwarf.

4. Target vetting tests

4.1. TESS pipeline data validation

As a first step in the false-positive vetting, we closely examined the data validation (DV) report (Twicken et al. 2018; Li et al. 2019) combining all four sectors (14, 15, 21, and 22) provided by the SPOC pipeline. Both of the TOI-1266 planet candidates successfully passed all the tests, which includes a search for discrepancies between odd and even transit depths, as well as, the search for a shallow secondary eclipse that could both identify a possible eclipsing binary scenario. DV also includes a difference image centroid test to ensure that the source of the transit occurs on the target star, as well as, a “ghost diagnostic test” to discard scattered light as a source for the observed signal. These conclusive tests encouraged us to conduct further analysis to validate both planet candidates.

4.2. SAINT-EX ground-based photometry

In the context of the TESS Follow-up Observing Program, we used SAINT-EX to perform observations of the transit of each planet to eliminate possible contamination from nearby stars included in the large TESS aperture. We identified five such sources located between 36 and 132'' from TOI-1266 within the Gaia DR2 catalogue (Brown et al. 2018), with measured delta magnitudes ranging between 4.6 and 7.1 in the z' band. Using AstroImageJ (Collins et al. 2017), we estimated that eclipse depths between 0.064 and 0.2 occurring on these stars would be necessary to create the 0.0015 deep transit observed on TOI-1266 for the c planet candidate. Visual inspection of the light curves

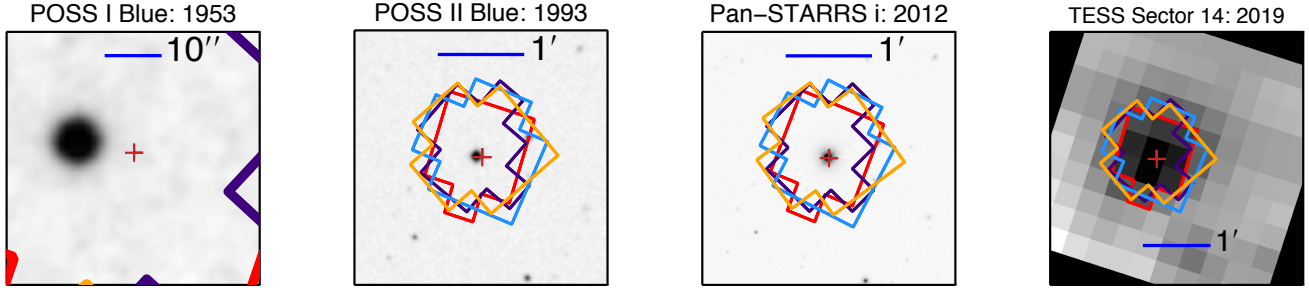


Fig. 4. Archival images of TOI-1266 to assess for current, unresolved blending. POSS I (1953), II (1993) and Pan-STARRS (2012) archival images around TOI-1266 with TESS field of view for sectors 14, 15, 21 and 22 superimposed. The red cross marks TOI-1266’s location at the 2020 epoch.

did not show transit signatures with the predicted depths on the nearby stars but revealed a 0.0015 deep transit on the target star as expected. We repeated the same analysis for the deeper transit of the b planet candidate, and confirmed both the lack of deep transits on the other stars and the detection of a ~ 0.003 transit on TOI-1266. This step of the analysis confirms that both transits occur on TOI-1266 without contamination from known *Gaia* DR2 sources. We also detected no wavelength dependence of the transit depths between the TESS, z' , r' , I_C , and V bandpasses (see Sect. 5.1.2).

4.3. Archival imagery

Archival images are useful for investigating the background contamination of stars with non-negligible proper motion (PM), such as TOI-1266. None of the blue and red POSS1 images from 1953 at the current target location show the presence of a source that would be blended with the target at the epoch of the TESS observations (Fig. 4). TOI-1266’s PM, combined with the moderate spatial resolution of ground-based all-sky surveys, does not allow us to constrain background sources from more recent optical imagery such as POSS2, Pan-STARRS and SDSS.

4.4. Statistical validation using high-resolution imaging with TRICERATOPS & VESPA

As an additional vetting step, we calculated the false positive probabilities of these TOIs using *triceratops* (Tool for Rating Interesting Candidate Exoplanets and Reliability Analysis of Transits Originating from Proximate Stars; Giacalone & Dressing 2020) and *vespa* (Validation of Exoplanet Signals using a Probabilistic Algorithm; Morton 2012, 2015). To tighten the constraints we obtain from these calculations, we incorporated the contrast curves obtained from our high-resolution AO imaging. With *triceratops*, we compute false positive probabilities of 0.00310 and 0.08287 for TOI-1266.01 and TOI-1266.02, respectively, and with *vespa*, we compute false positive probabilities of 0.00002 and 0.00993, respectively⁷. Because this is a multi-planet system, we were able to apply additional priors to these probabilities using the results of Lissauer et al. (2012a). This study uses data from the *Kepler* mission to estimate the fraction of planet candidates that are false positives when in

systems with multiple planet candidates. This is done by assuming that the expected number of targets with k false positives, $E(k)$, is given by the Poisson distribution

$$E(k) = \frac{\lambda^k e^{-\lambda}}{k!} N \approx \frac{\left(R_{\text{FP}} \frac{n}{N}\right)^k}{k!} N, \quad (1)$$

where R_{FP} is the false positive rate, n is the number of planet candidates, and N is the number of targets from which the sample is drawn. The sample used in Lissauer et al. (2012a) contained $n = 230$ planet candidates in candidate two-planet systems from $N = 160\,171$ total targets and assumed $R_{\text{FP}} = 0.5$. Thus, the expected number of candidate two-planet systems in which both planet candidates are false positives is $E(k=2) \approx 1$ and the expected number of candidate two-planet systems in which only one planet candidate is a false positive is $(1 - R_{\text{FP}}) \frac{n}{N} \times E(k=1) \approx 2$. Therefore, the prior probability that a planet candidate in a candidate two-planet system is a false positive is $(1 + 2)/230 \approx 0.01$ (see also Guerrero et al. 2020). Multiplying the probabilities above by this prior, we find a false positive probability < 0.01 for both TOIs using both *triceratops* and *vespa*.

These probabilities are sufficiently low to rule out astrophysical false positives originating from both resolved nearby stars, and unresolved stars blended within the photometric aperture. In conclusion, the combination of TESS photometry, high-resolution spectroscopy, high-precision ground-based photometry, and archival imagery enable us to rule out false-positive scenarios for the observed transit signals of TOI-1266 b and c.

4.5. Possible bound stellar companions

Thanks to our data, we can place some limited constraints on the presence of a binary companion. Our high-resolution imaging in Fig. 2 limits any object with a $\Delta m > 4$ in z -band at a distance $> 0.2''$ (corresponding to a semi-major axis of 7.2 au, and orbital period of 25 yr). Using the Baraffe et al. (2015) models, and assuming a system age of 5 Gyr, we can exclude any binary companion with a mass $> 0.10 M_{\odot}$. Using the K -band observations, we can exclude the presence of any Hydrogen-burning object beyond $1''$ ($> 0.07 M_{\odot}$).

Inside of 7.2 au, we have to rely on spectroscopy to place any constraints. A companion could in principle be detected as an extra set of lines, which requires two conditions: it is bright enough, and its orbital velocity is distinct enough from the TOI-1266 A, the primary star. Our HIRES spectrum reached a S/N of 80. Using models from Baraffe et al. (2015) once more, stellar companions with masses $> 0.15 M_{\odot}$ could be detectable with $S/N = 5$. The velocity resolution of HIRES is $\sim 6 \text{ km s}^{-1}$. All companions with orbital velocity $< 12 \text{ km s}^{-1}$ would see

⁷ Discrepancies in these false positive probabilities are due to differences in the calculations performed by the two tools. At the time of this writing, *triceratops* estimated probability using maximum likelihood estimation, while *vespa* determines probability by calculating marginal likelihoods. In addition, *triceratops* considers more false positive scenarios in its procedure. Regardless, both tools require a false positive probability < 0.05 to validate a planet candidate.

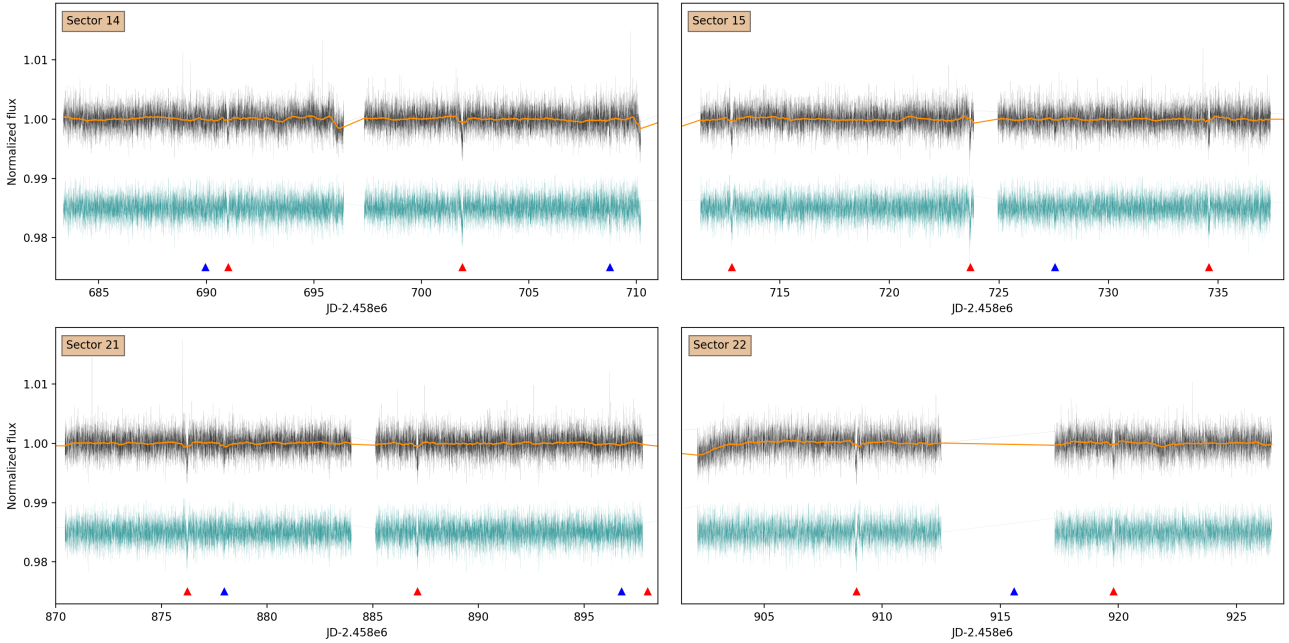


Fig. 5. TESS data of TOI-1266 from the four sectors in which it was observed. In all cases, the black line corresponds to the PDC-SAP fluxes obtained from SPOC pipeline, the solid-orange line corresponds to the best-detrended model, and the teal line is the final detrended lightcurve. The red triangles mark the 10.8 d period planetary candidate, while the blue triangles mark the 18.8 d candidate.

their absorption lines blending with the primary’s for the majority of their orbital motion, meaning they would likely remain unnoticed. An orbital velocity difference of $>12 \text{ km s}^{-1}$, corresponds to orbital separations of $<3.8 \text{ au}$ (period $\sim 10.7 \text{ yr}$), for a secondary mass of $0.15 M_{\odot}$, and $\sin i = 1$.

Using dynamical arguments, we can also exclude the presence of a secondary star at orbital separations $<0.3 \text{ au}$ (orbital periods around 0.2 yr) or TOI-1266 c would be unstable for any orbital inclination (Holman & Wiegert 1999). Similarly, a stable and circular inner planetary system implies that an external companion has not produced Lidov-Kozai cycles that would excite the eccentricities of the planetary orbits (Lidov 1962; Kozai 1962; Wu et al. 2007). Using the Lidov-Kozai timescale derived in Kiseleva et al. (1998), we find that companions with a mass of $>0.05 M_{\odot}$, eccentricities of 0.3, and orbital periods of 1000 yr ($\sim 82 \text{ au}$), would induce cycles in the eccentricity of TOI-1266 c, on timescales much shorter than the age of the system (21 Myr for the parameters we quote), but only if that companion has an orbital inclination between 40 and 140° .

In summary, we can exclude detecting the presence within the data of most stellar companions, except at orbital separations between 3.8 and 7.2 au . However, we cannot exclude any companion should that object be within the line of sight (i.e. high-angular resolution imaging does not detect it, and with a relative radial velocity near 0 km s^{-1}). Radial velocities would not detect face-on orbits, however those are ruled out using dynamical arguments.

5. Results

5.1. Photometric analysis

5.1.1. Planet search and detection limits from the TESS photometry

As mentioned previously, TOI-1266 was observed by TESS in sectors 14, 15, 21 and 22. The TESS Science Office

issued two alerts for this object based on SPOC DV reports; TOI 1266.01 and TOI 1266.02 correspond to planetary candidates with periods of 10.8 and 18.8 d respectively. We performed our own search for candidates using the SHERLOCK⁸ (Searching for Hints of Exoplanets fRom Lightcurves Of spaCe-based seeKers) pipeline presented in Pozuelos et al. (2020). This pipeline makes use of the Lightkurve package (Lightkurve Collaboration 2018), which downloads the PDC-SAP flux data from the NASA Mikulski Archive for Space Telescope (MAST), and removes outliers defined as data points $>3\sigma$ above the running mean. In order to remove stellar noise and instrumental drifts, our pipeline uses WOTAN (Hippke et al. 2019) with two different detrending methods: bi-weight and Gaussian process with a Matérn 3/2-kernel. In both cases, a number of detrending approaches were applied by varying the window and kernel sizes to maximise the signal detection efficiency (SDE) of the transit search, which was performed by means of the TRANSIT LEAST SQUARES package (Hippke & Heller 2019). The TRANSIT LEAST SQUARES uses an analytical transit model based on the stellar parameters, and is optimised for the detection of shallow periodic transits. We properly recovered the two aforementioned candidates, where the best systematics model corresponded to the bi-weight method with a window-size of 0.4149 d . In addition to these two signals, we found a threshold-crossing event with a period of 12.5 d . However, after an in-depth vetting process (Heller et al. 2019), we discarded this signal, which we attributed to systematics in the data set. We show in Fig. 5 the PDC-SAP flux, the best systematics model, and the final detrended lightcurve with the two planet candidates.

In order to assess the detectability of other planets in the data set available from TESS, we performed an injection-recovery test, where we injected synthetic planetary signals into the PDC-SAP fluxes corresponding to planets with different radii and

⁸ SHERLOCK code is available upon request.

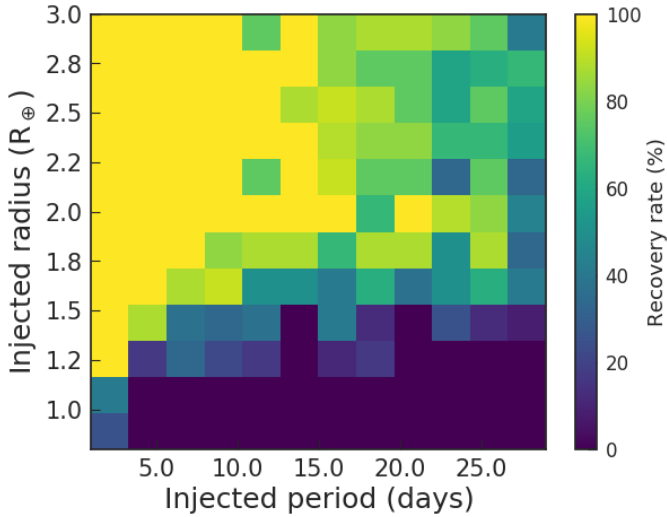


Fig. 6. Injection-and-recovery test performed to check the detectability of extra planets in the system. We explored a total of 1305 different scenarios. Larger recovery rates are presented in green and yellow colours, while lower recovery rates are shown in blue and darker hues. Planets smaller than $1.5 R_{\oplus}$ would remain undetected for almost the full set of periods explored.

periods. We then detrended the lightcurve using the best method found previously that is the bi-weight approach with a window size of 0.4149 d. Before searching for planets, we masked the two known candidate planets with periods of 10.8 and 18.8 d. We explored the $R_{\text{planet}}-P_{\text{planet}}$ parameter space in the ranges of $0.8-3.0 R_{\oplus}$ with steps of $0.05 R_{\oplus}$, and $1-30$ d with steps of 1 d, for a total of 1305 different scenarios. In this test, we defined an injected signal as being recovered when a detected epoch matched the injected epoch within one hour, and if a detected period matched any half-multiple of the injected period to better than 5%. It is important to note that since we injected the synthetic signals directly in the PDC-SAP lightcurve, they were not affected by the PDC-SAP systematic corrections. Therefore, the detection limits found correspond to the most optimistic scenario (see e.g. Pozuelos et al. 2020; Eisner et al. 2020). The results are shown in Fig. 6, and we reached several conclusions from this test: (1) we can rule out the presence of planets with sizes larger than $\sim 1.5 R_{\oplus}$ with orbits shorter than 10 d. However, such planets might reside in orbits with longer periods and, thus, remain undetected, as a longer period yields a lower detectability. In fact, for periods greater than 10 d, we obtained a recovery rate ranging from 30 to 70%. (2) For the full set of investigated periods, planets with sizes smaller than $1.5 R_{\oplus}$ would remain undetected, with recovery rates lower than 30%, and close to 0% for $1.0 R_{\oplus}$.

5.1.2. Global analysis

We used the full photometric dataset described in Sect. 2 along with the transit signals detected in the previous step as input parameters to a global analysis of the TOI-1266 system. We also included the stellar mass and effective temperature derived in Sect. 3 as Gaussian priors to convert the transit fitted parameters into physical values.

We used the MCMC algorithm implementation already presented in the literature (e.g. Gillon et al. 2012, 2014; Demory et al. 2012). The inputs to the MCMC are the photometric time-series obtained during the data reduction described above. For each light curve, we fit simultaneously for the instrument

baseline model and a transit model of two Keplerian orbits corresponding to TOI-1266 b and c. This approach ensures that instrumental systematic noise is properly propagated to the system parameters of interest. The photometric baseline model coefficients used for detrending for each instrument are determined at each step of the MCMC procedure using a singular value decomposition method (Press et al. 1992). The resulting coefficients are then used to correct the raw photometric lightcurves. Such an approach is necessary because the input data originate from multiple instruments with different sources of systematics. We show in Table 4 the baseline model used for each light curve. To derive accurate uncertainties on the system parameters, we computed two scaling factors, β_w and β_r , following Winn et al. (2008), to account for over- or under-estimated white noise and correlated noise (Pont et al. 2006) in each dataset (these values are computed over 10 to 240-min timescales).

We computed the quadratic limb-darkening (LD) coefficients u_1 and u_2 in the TESS, z' , r' , I_C , and Johnson V filters, using the PyLDTk code (Parviainen & Aigrain 2015) and a library of PHOENIX high-resolution synthetic spectra (Husser et al. 2013). We placed Gaussian priors on each of the quadratic LD parameters, with a 5-fold inflation of the uncertainties computed from model interpolation. All LD parameters used in this analysis are shown in Table 5. For each of the two planets, we fitted for (1) the transit depth (planet-to-star area ratio) $\frac{R_p^2}{R_*^2}$ for each instrument to assess transit depth chromaticity, (2) the transit duration T_{14} , (3) the orbital period P , (4) the transit centre T_0 , and (5) the impact parameter $b = \frac{a \cos i}{R_*}$, where a is the orbital semi-major axis and i the orbital inclination. For this MCMC fit, we assumed circular orbits, and fixed $\sqrt{e} \cos \omega$ and $\sqrt{e} \sin \omega$ values to 0. We ran two chains of 100 000 steps (including 20% burn-in) each, and checked their efficient mixing and convergence by visually inspecting the autocorrelation functions of each chain, and by using the Gelman & Rubin (1992) statistical test, ensuring that the test values for all fitted parameters were < 1.01 .

We show in Table 6 the median and 1σ credible intervals of the system parameter's posterior distribution functions. The corresponding light curves for both planets are shown in Fig. 7–10.

Our analysis shows a good agreement between the combined stellar density value of $\rho_* = 8.99 \pm 1.25 \text{ g cm}^{-3}$ derived from the photometry alone, and (1) the $\rho_* = 8.7 \pm 2.3 \text{ g cm}^{-3}$ derived from the SED+Mann analysis, as well as, (2) the $\rho_* = 8.04^{+0.66}_{-0.55} \text{ g cm}^{-3}$ derived from the EXOFASTv2 analysis described in Sect. 3. The transit depths measured in four different bandpasses (TESS, z' , r' , and V) for TOI-1266 b are all in agreement at the $\sim 2\text{-}\sigma$ level. We find a good agreement as well for the transit depth of TOI-1266 c albeit with only two bandpasses (TESS and z'). We also repeated the same MCMC analysis, this time allowing $\sqrt{e} \cos \omega$ and $\sqrt{e} \sin \omega$ to vary, but did not find evidence for eccentric orbits for any of TOI-1266 b and c, using transit photometry alone.

5.2. Dynamical analysis

5.2.1. Mass constraints from TTVs

As the system is within 6% of the second order 5:3 mean motion resonance (MMR) and within 14% of the stronger first order 2:1 MMR, we attempt to constrain planet masses from the transit timing variations (Agol et al. 2005; Holman 2005; Agol & Fabrycky 2017) measured in our combined photometric dataset. We have in total 13 transits of planet b and five

Table 4. Baseline model functional forms, residual RMS, and scaling factors of each transit light curve used in the photometric global analysis.

Planet	Facility	T0 [BJD _{TDB}]	Baseline model functional form	Residual RMS (exp. time)	β_w	β_r
b	TESS	8691.0063	Flux offset	0.00165 (120 s)	0.44	1.18
		8701.9011	Flux offset	0.00186 (120 s)	0.50	1.10
		8712.7959	Flux offset	0.00176 (120 s)	0.81	1.16
		8723.6907	Flux offset	0.00173 (120 s)	0.68	1.53
		8734.5855	Flux offset	0.00190 (120 s)	0.84	1.11
		8876.2179	Flux offset	0.00188 (120 s)	0.91	1.00
		8887.1127	Flux offset	0.00174 (120 s)	0.84	1.22
		8908.9023	Flux offset	0.00178 (120 s)	0.78	1.18
		8919.7971	Flux offset	0.00180 (120 s)	0.79	1.08
		OAA	8843.5335	Flux offset + airmass ²	0.00080 (160 s)	1.02
	SAINT-EX	8908.9023	Flux offset + airmass ² + $FWHM^2$	0.00352 (12 s)	0.51	1.98
	TRAPPIST-N	8930.6920	Flux offset + airmass ² + $FWHM^2$	0.00370 (15 s)	0.71	1.35
	Artemis	8930.6920	Flux offset + airmass ² + $FWHM^2$	0.00344 (10 s)	0.79	1.32
	TRAPPIST-N	8941.5868	Flux offset + airmass ² + $FWHM^2$	0.00287 (60 s)	0.78	1.15
	Kotizarovci	8963.3764	Flux offset + airmass ²	0.00435 (50 s)	0.70	1.58
ZRO	8963.3764	Time ² + airmass ²	0.00101 (200 s)	0.56	1.43	
c	TESS	8689.9612	Flux offset	0.00189 (120 s)	0.51	1.04
		8708.7625		0.00190 (120 s)	0.49	1.00
		8727.5638		0.00185 (120 s)	0.77	1.33
		8877.9741		0.00174 (120 s)	0.84	1.00
		8896.7754		0.00180 (120 s)	0.87	1.00
	SAINT-EX	8877.9741	Flux offset + airmass ² + $FWHM^2$	0.00488 (12 s)	1.04	1.10

Notes. For each baseline, a polynomial is used with the indicated variables as parameters.

Table 5. Quadratic limb-darkening coefficients used in the photometric global analysis for each instrument.

Filter	u_1	u_2	Notes
TESS	0.20 ± 0.09	0.41 ± 0.10	Used as well for Kotizarovci
z'	0.17 ± 0.08	0.27 ± 0.09	
r'	0.39 ± 0.10	0.31 ± 0.09	
V	0.38 ± 0.10	0.32 ± 0.09	
I_c	0.20 ± 0.09	0.29 ± 0.09	
Clear	0.33 ± 0.09	0.30 ± 0.09	ZRO, QE > 50% between 480 and 800 nm

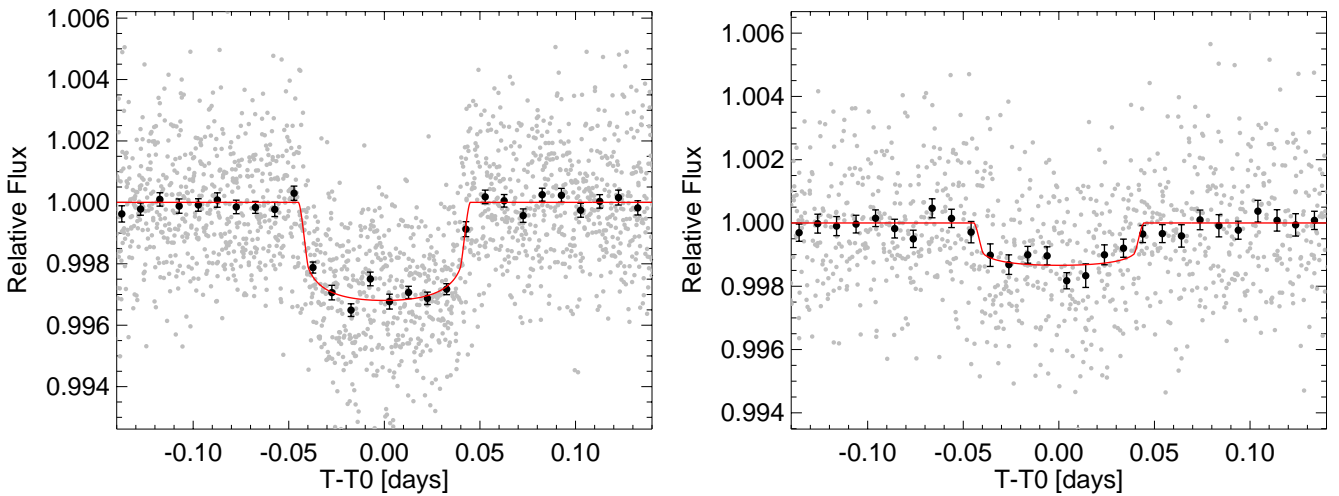


Fig. 7. TESS phase-folded transits of TOI-1266 b (*left*) and TOI-1266 c (*right*) from the global analysis. Grey circles are un-binned data points while 15-min bins are shown as black circles. The best-fit model is shown in red.

Table 6. Global model fitted results along with mass and eccentricity estimates from the TTV analysis (see Sect. 5.2.1).

Parameter	TOI-1266 b	TOI-1266 c
<i>Transit fitted parameters</i>		
Transit depth, $(R_p/R_\star)^2$	$0.00276^{+0.00010}_{-0.00011}$	0.00120 ± 0.00017
Transit duration, T_{14} (days)	$0.0887^{+0.0013}_{-0.0012}$	$0.0911^{+0.0055}_{-0.0056}$
Impact parameter, b	0.38 ± 0.12	$0.61^{+0.08}_{-0.09}$
Mid-transit time, T_0 (BJD _{TDB})	$2458821.74439^{+0.00054}_{-0.00055}$	$2458821.5706^{+0.0034}_{-0.0029}$
Orbital period, P (days)	$10.894843^{+0.00067}_{-0.00066}$	$18.80151^{+0.00067}_{-0.00069}$
Tr. depth diff., $\delta_{\text{TESS-SAINTEX},z'}$	$0.00106^{+0.00069}_{-0.00067}$	0.00089 ± 0.00063
Tr. depth diff., $\delta_{\text{TESS-TRAPPIST-N},z'}$	$0.00079^{+0.00071}_{-0.00075}$	
Tr. depth diff., $\delta_{\text{TESS-TRAPPIST-N},V}$	$0.00067^{+0.00045}_{-0.00046}$	
Tr. depth diff., $\delta_{\text{TESS-ARTEMIS},r'}$	0.00049 ± 0.00120	
Tr. depth diff., $\delta_{\text{TESS-OAA},lc}$	$-0.00039^{+0.0016}_{-0.0013}$	
Tr. depth diff., $\delta_{\text{TESS-ZRO},clear}$	$0.0035^{+0.0026}_{-0.0019}$	
Tr. depth diff., $\delta_{\text{TESS-Kotizarovci},\text{TESSband}}$	$0.00192^{+0.00094}_{-0.00098}$	
<i>Physical and orbital parameters</i>		
Planet radius, R_p (R_\oplus)	$2.37^{+0.16}_{-0.12}$	$1.56^{+0.15}_{-0.13}$
Semi-major axis, a_p (au)	$0.0736^{+0.0016}_{-0.0017}$	$0.1058^{+0.0023}_{-0.0024}$
Orbital inclination, i_p (deg)	$89.5^{+0.2}_{-0.2}$	$89.3^{+0.1}_{-0.1}$
Irradiation, S_p (S_\oplus)	$4.9^{+1.0}_{-0.8}$	$2.3^{+0.5}_{-0.4}$
Equilibrium temperature, T_{eq} (K)	413 ± 20	344 ± 16
Planet mass (TTV), M_p (M_\oplus)	$13.5^{+11.0}_{-9.0}$ (<36.8 at $2\text{-}\sigma$)	$2.2^{+2.0}_{-1.5}$ (<5.7 at $2\text{-}\sigma$)
Orbital eccentricity (TTV), e	$0.09^{+0.06}_{-0.05}$ (<0.21 at $2\text{-}\sigma$)	0.04 ± 0.03 (<0.10 at $2\text{-}\sigma$)

Notes. For each parameter, we indicate the median of the posterior distribution function, along with the $1\text{-}\sigma$ credible intervals. The equilibrium temperature corresponds to a case with null Bond albedo and no heat recirculation from the day side to the nightside hemispheres of the planet.

transits of planet c (Table 7). We computed TTVs using a similar MCMC setup as in Sect. 5.1.2, but allowing each transit timing to vary, using the same tests as the ones described in Sect. 5.1.2 to ensure that the chains have converged. We derived posterior distribution functions for each transit timing that we use for our TTV analysis described in this section. While our observations provide only a partial sampling of the TTV libration periods (Steffen 2006; Lithwick et al. 2012) of ~ 106 and 68 days for the 5:3 and 2:1 MMR respectively, we can still place upper limits on the masses computed from N -body simulations.

We used the integrator GENGA (Gravitational Encounters in N -body simulations with Graphics processing unit Acceleration; Grimm & Stadel 2014) together with a differential evolution Markov chain Monte Carlo (DEMCMC) method (Ter Braak 2006; Vrugt et al. 2009), as described in Grimm et al. (2018), to perform a TTV analysis of the transit timings reported in Table 7. The TTV signal is shown in Fig. 11 together with 1000 samples from the MCMC calculations. We find planetary masses of $M_p = 13.5^{+11.0}_{-9.0} M_\oplus$ ($<36.8 M_\oplus$ at $2\text{-}\sigma$) for TOI-1266 b, and $2.2^{+2.0}_{-1.5} M_\oplus$ ($<5.7 M_\oplus$ at $2\text{-}\sigma$) for TOI-1266 c. We constrain the orbital eccentricities to $0.09^{+0.06}_{-0.05}$ (<0.21 at $2\text{-}\sigma$) for TOI-1266 b, and 0.04 ± 0.03 (<0.10 at $2\text{-}\sigma$) for TOI-1266 c. The posterior distributions of the derived masses and eccentricities are shown in Fig. 12. We note that the arguments of periastron remain unconstrained. A visual inspection of Fig. 11 shows that the libration period favoured by the fit is ~ 70 days,

which suggests that the system dynamics are more influenced by the 2:1 MMR than the 5:3 MMR. The small number of TOI-1266 c transits combined with their shallow depth causes the derived mass for TOI-1266 b to be less constrained by the data. During our exploration of the parameter space, we found another, lower statistical significance solution, yielding a similar mass for c but higher mass and smaller eccentricity for b. Further high-precision transits are, thus, required to improve these preliminary mass and eccentricity constraints. It is also worth mentioning that the expected radial-velocity semi-amplitude of approximately 4 m s^{-1} would enable mass measurements of TOI-1266 b with Doppler spectroscopy, thus, complementing the TTV technique for the innermost planet.

5.2.2. Stability analysis

With the current set of data, we found as a likely planetary architecture a system composed by two eccentric planets: a more massive inner planet, TOI-1266 b, at 0.0736 au, and a lighter one, TOI-1266 c, at 0.1058 au. Unfortunately, due to the large uncertainties in their masses, the nature of these planets remains unknown (see Table 6). In this section, we seek to constrain the masses and eccentricities of the planets by exploring the global stability of the system. To achieve this, we made use of the Mean Exponential Growth factor of Nearby Orbits, $Y(t)$ (MEGNO; Cincotta & Simó 1999, 2000; Cincotta et al. 2003) parameter. This chaos index has been widely used to explore the

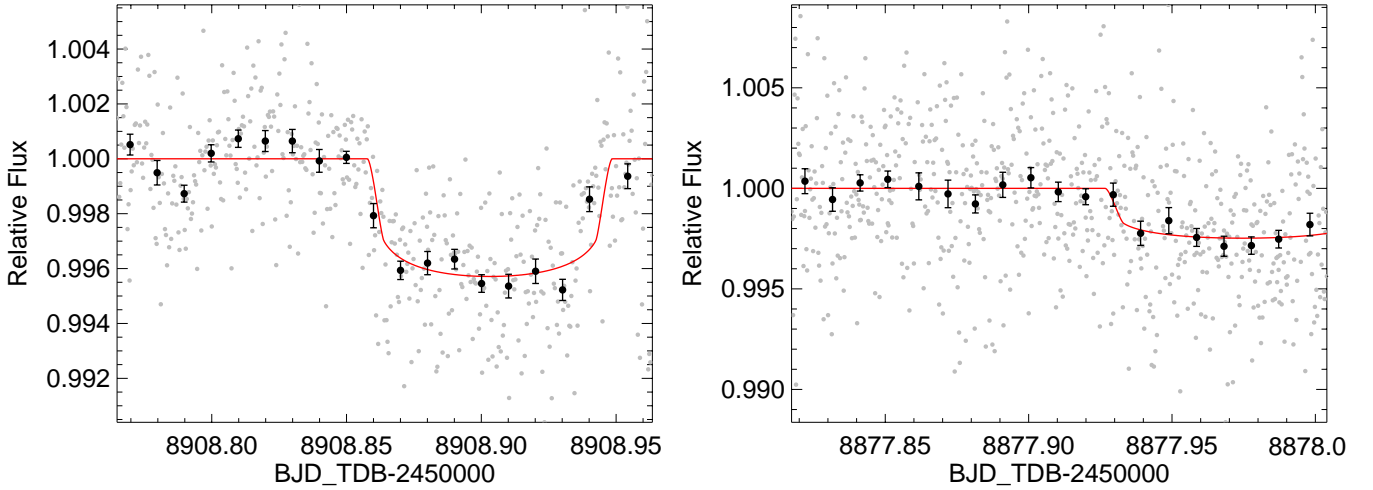


Fig. 8. SAINT-EX detrended transits of TOI-1266 b (*left*) and TOI-1266 c (*right*) from the global analysis, both observed in z' . Grey circles are un-binned data points while 15-min bins are shown as black circles. The best-fit model is shown in red.

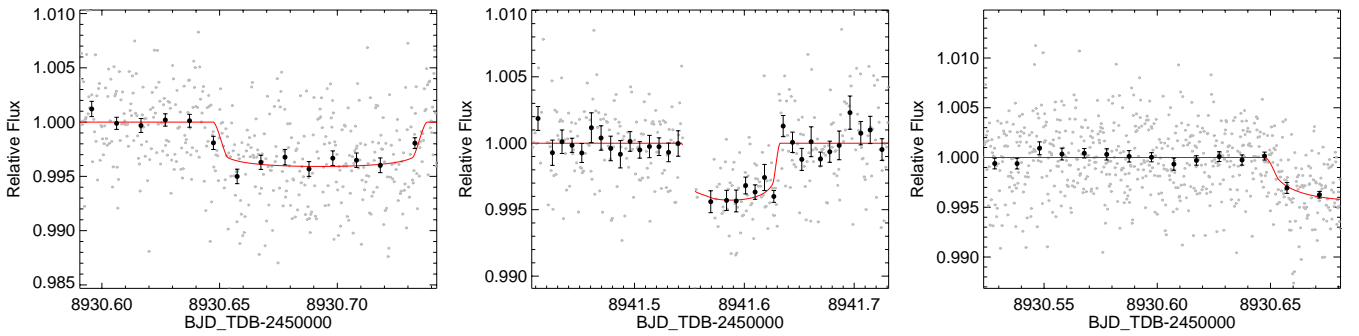


Fig. 9. Single, detrended transits of TOI-1266 b obtained with TRAPPIST-N in z' (*left*), V (*centre*), and with ARTEMIS in r' (*right*) from the global analysis. Grey circles are un-binned data points while 15-min bins are shown as black circles. The best-fit model is shown in red.

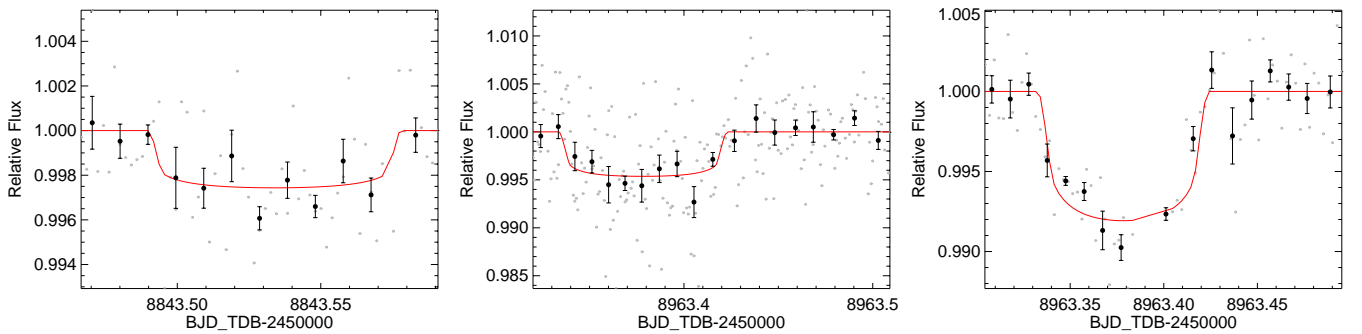


Fig. 10. Single, detrended transits of TOI-1266 b obtained with OAA (*left*), Kotizarovci (*centre*), and with ZRO (*right*) from the global analysis. Grey circles are un-binned data points while 15-min bins are shown as black circles. The best-fit model is shown in red.

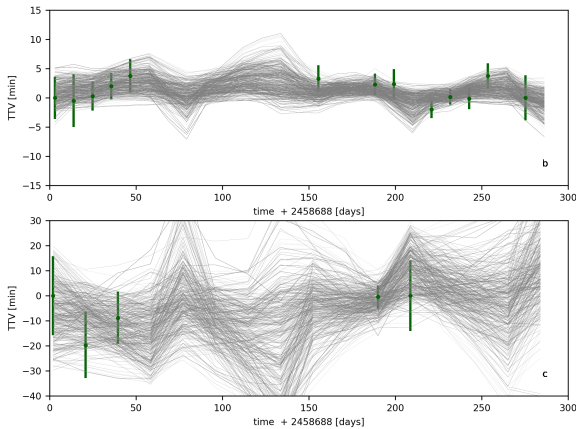
stability of both the Solar System, and extrasolar planetary systems (e.g. Jenkins et al. 2009; Hinse et al. 2015; Wood et al. 2017; Horner et al. 2019). In short, MEGNO evaluates the stability of a body's trajectory after a small perturbation of its initial conditions through its time-averaged mean value, $\langle Y(t) \rangle$, which amplifies any stochastic behaviour, thereby allowing one to distinguish between chaotic and quasi-periodic trajectories during the integration time: if $\langle Y(t) \rangle \rightarrow 2$ for $t \rightarrow \infty$, the motion is quasi-periodic; while if $\langle Y(t) \rangle \rightarrow \infty$ for $t \rightarrow \infty$, the system is chaotic. To investigate this, we used the MEGNO implementation with an N -body integrator REBOUND (Rein & Liu

2012), which employs the Wisdom-Holman WHfast code (Rein & Tamayo 2015).

We performed two suites of simulations to explore if the system could actually be fully stable in the range of the $2\text{-}\sigma$ uncertainties obtained for the masses and the eccentricities (see Sect. 5.2.1). To address this question, we constructed two-dimensional MEGNO-maps in the $M_b\text{-}M_c$ and $e_b\text{-}e_c$ parameter spaces following Jenkins et al. (2019). Hence, in the first case, we explored planet masses ranging from 1 to $37 M_\oplus$ for TOI-1266 b, and from 1 to $6 M_\oplus$ for TOI-1266 c. In the second case, we explored planet eccentricities in the ranges of 0.0–0.21 and

Table 7. Transit timings used in the TTV analysis.

Predicted timing BJD _{TDB} -2 450 000	Observed difference days	Source
<i>TOI-1266 b</i>		
8691.00632	-0.00138 ^{+0.00237} _{-0.00252}	TESS
8701.90112	-0.00164 ^{+0.00260} _{-0.00312}	TESS
8712.79593	-0.00101 ^{+0.00202} _{-0.00171}	TESS
8723.69073	0.00028 ^{+0.00159} _{-0.00158}	TESS
8734.58553	0.00160 ^{+0.00185} _{-0.00199}	TESS
8843.53357	0.00218 ^{+0.00158} _{-0.00142}	OAA
8876.21798	0.00178 ^{+0.00127} _{-0.00125}	TESS
8887.11278	0.00192 ^{+0.00178} _{-0.00144}	TESS
8908.90239	-0.00092 ^{+0.00086} _{-0.00103}	TESS + SAINT-EX
8919.79719	0.00066 ^{+0.00092} _{-0.00086}	TESS
8930.69199	0.00054 ^{+0.00106} _{-0.00127}	ARTEMIS + TRAPPIST-N
8941.58680	0.00334 ^{+0.00142} _{-0.00148}	TRAPPIST-N
8963.37640	0.00092 ^{+0.00210} _{-0.00267}	Kotizarovci + ZRO
<i>TOI-1266 c</i>		
8689.96122	0.01117 ^{+0.01095} _{-0.01084}	TESS
8708.76250	-0.00347 ^{+0.00883} _{-0.00913}	TESS
8727.56379	0.00313 ^{+0.00726} _{-0.00656}	TESS
8877.97410	0.00165 ^{+0.00293} _{-0.00321}	TESS + SAINT-EX
8896.77539	0.00105 ^{+0.00979} _{-0.00702}	TESS


Fig. 11. TTV signal of the two planets. In green are shown the observed transit times with the corresponding uncertainties, in black are shown the transit times from 1000 random MCMC samples.

0.0–0.1 for TOI-1266 b and TOI-1266 c, respectively. In both sets of simulations, we took 100 values from each range, meaning that the size of the obtained MEGNO-maps were 100×100 pixels. Thus, we explored the M_b – M_c and e_b – e_c parameter spaces up to 10 000 times in total. In each case, we fixed the other parameters to the nominal values given in Table 6. The integration time was set to 1 million orbits of the outermost planet, and the time-step was set to 5% of the orbital period of the innermost planet. We found that, concerning the masses, the system is fully

stable in the range of values studied here; hence we cannot set extra constraints on the planetary masses. On the other hand, we found that the full set of eccentricities explored is not permitted, and we identified regions with different behaviours where the system transitions from stable to unstable gradually towards the upper-right region of the e_b – e_c parameter space (see Fig. 13). This allowed us to clearly identify three different regions (A, B, and C). First, where the system is fully stable (A), and where the mutual eccentricities follow the relationship given by:

$$e_b + 0.992e_c < 0.098. \quad (2)$$

Then, the second is a transitional region where the system is still stable, but some instabilities appear (B). This region spans from the limit given by Eq. (2), and the upper limit given by:

$$\begin{cases} e_b < 0.140 & \text{if } e_c < 0.032, \\ e_b + 1.14e_c < 0.17 & \text{if } e_c > 0.032. \end{cases} \quad (3)$$

Finally, region C, where the aforementioned relationships are violated, and instability is more likely. We found that the nominal values are stable in the transition region of the parameter space (i.e. region B), which may hint that these values could be more appropriately considered as upper limits to stability, where larger values would rapidly turn into unstable scenarios. This encouraged us to favour the hypothesis of low eccentricities for both planets in terms of long-term stability, with the most restrictive condition given by Eq. (2). Hereafter, for our dynamical purposes, we have adopted the nominal planetary masses

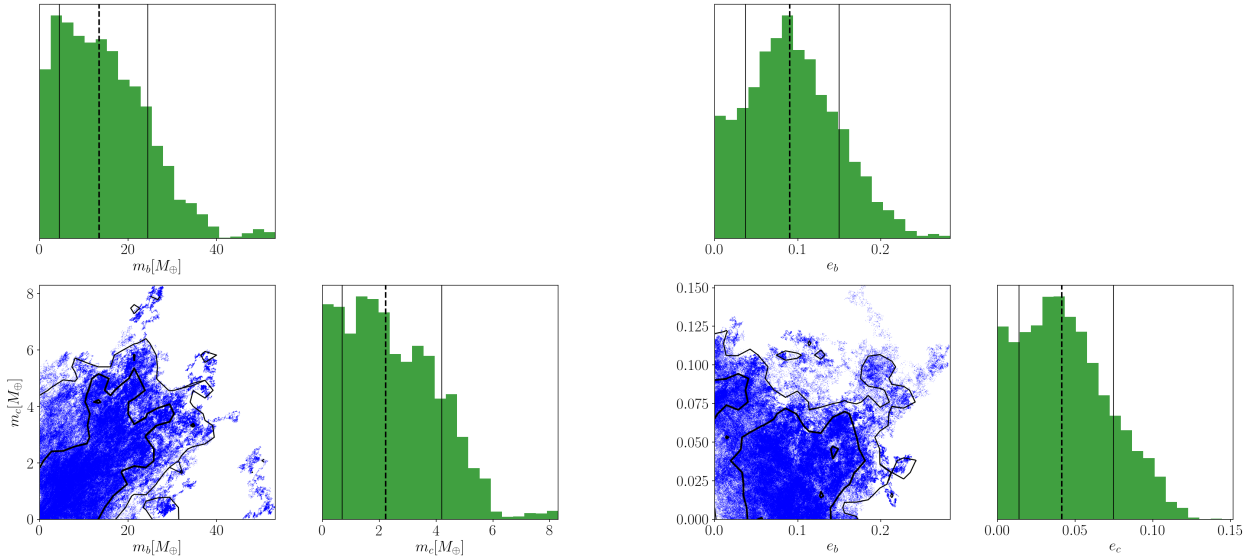


Fig. 12. Posterior distribution for TOI-1266 b and c masses (*left*), and eccentricities (*right*) from the TTV analysis. The histograms show the median (dashed lines) and the $1\text{-}\sigma$ credible intervals (solid lines). We show in blue the posterior distributions with the 1- and $2\text{-}\sigma$ contour lines.

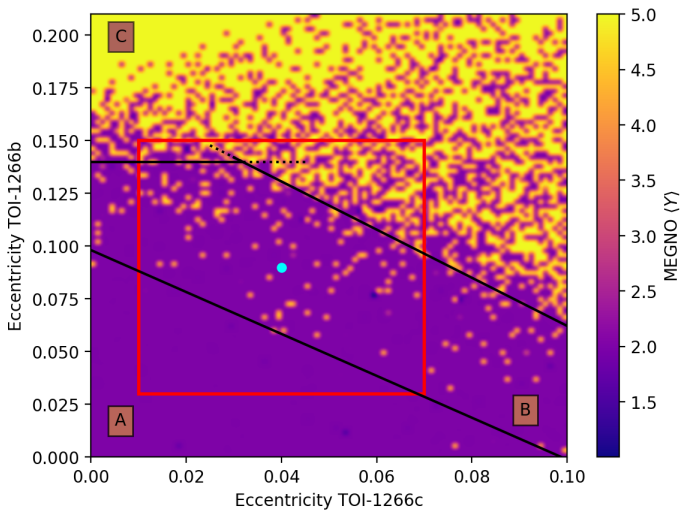


Fig. 13. Dynamical analysis of the TOI-1266 system based on a MEGNO-map. The size of the map is 100×100 pixels, which explores the $e_b\text{-}e_c$ parameter space at the $2\text{-}\sigma$ uncertainty level. When $\langle Y(t) \rangle \rightarrow 2$ (purple shaded regions), quasi-periodic orbits are found, while chaotic systems are found when $\langle Y(t) \rangle \rightarrow 5$ (yellow shaded regions). The configuration with the nominal values of e_b and e_c is shown by the blue marker, while the $1\text{-}\sigma$ uncertainty region is shown by the red box. The three areas, A (stable region), B (transition region), and C (unstable region) have been labelled, and are delimited by the solid black lines, which represent the conditions given by Eqs. (2) and (3).

and eccentricities given in Table 6, which, as we demonstrated, are stable and, in the case of the eccentricities, may represent a realistic upper limits of their real values.

Using the stellar parameters given in Table 2, the planetary parameters provided in Table 6, and the derived planetary masses described above, we conducted a dynamical analysis of the system with the goal of testing for the potential existence of additional planets, especially in the region where the TESS photometry is not accurate enough to detect them, as the case for planets smaller than $1.5 R_{\oplus}$ with periods longer than 4 days (see Fig. 6). For this purpose, we used the MERCURY Integrator

Package (Chambers 1999) to perform the N -body integrations. The adopted methodology is similar to that used by Kane (2015, 2019), where a grid of initial conditions is used to explore the valid parameter space for possible additional planets within the system. The innermost planet has an orbital period of ~ 10.8 d, and so we used a conservative time step of 0.2 days to ensure the perturbative reliability of the simulations. An initial simulation of the two known planets for 10^7 yr, equivalent to 2×10^8 orbits of the outer planet, demonstrated the intrinsic stability of the system described in Table 6. We then inserted an Earth-mass planet in a circular orbit at several hundred locations within the semi-major axis range of 0.05–0.20 au to test for possible locations of additional planets within the system. These simulations were executed for 10^6 yr each, and the results were evaluated based on the survival of all planets. Non-survival means that one or more of the planets were ejected from the system or lost to the potential well of the host star. The results of this simulation are shown in Fig. 14, where the semi-major axis (bottom) and orbital period (top) are shown on the x -axis, and the percentage of the simulation time during which all three planets survived is shown on the y -axis. These results show that the semi-major axis range of 0.058–0.138 au is a largely unstable region where, given an additional planet, it is highly unlikely that orbital integrity of the system may be retained. However, outside of this range, the viability of orbits is rapidly regained and so there is potential for numerous other locations where additional transiting or non-transiting planets may contribute to the overall system architecture.

5.2.3. Tidal evolution

TOI-1266 b and TOI-1266 c are close-in exoplanets, which, due to their proximity to their host star, may be affected by tides. While the size and maximum mass face values of TOI-1266 c point to a terrestrial composition, the large uncertainty in the mass of TOI-1266 b prevents us from making any definitive assertions regarding its nature. Therefore, in this section we only focus on the tidal evolution of TOI-1266 c. To quantify the influence of tides on this planet, we made use of the constant time-lag model (CTL), where a planet is considered as a

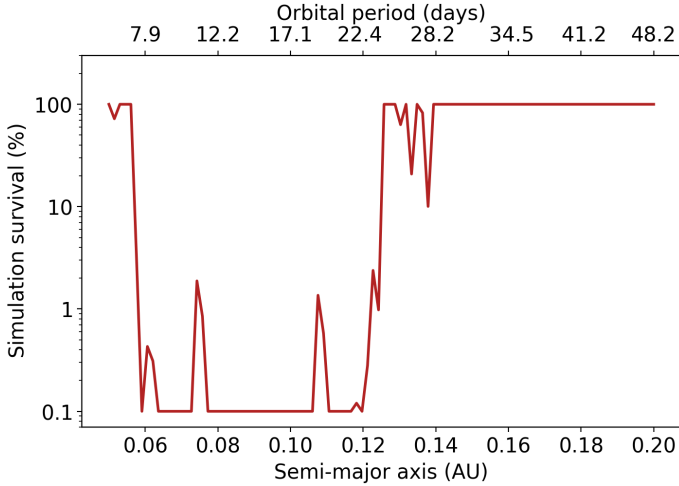


Fig. 14. Survival rate of an additional Earth-mass planet in the TOI-1266 system. The results of a dynamical stability analysis that placed an Earth-mass within the system in the semi-major axis range of 0.05–0.20 au and evaluated the overall system stability for a period of 10^6 yr (see description in Sect. 5.2.2). These results demonstrate that there are few viable orbits allowed in the range 0.064–0.131 au, but that additional terrestrial planets may exist in the system outside of that range.

weakly viscous fluid that is deformed due to gravitational effects (see e.g. Mignard 1979; Hut 1981; Eggleton et al. 1998; Leconte et al. 2010). Tides affect each orbital parameter over a different time-scale: the obliquity and rotational period are the first to be altered, while the eccentricity and the semi-major axis are affected over longer periods of time (see e.g. Bolmont et al. 2014; Barnes 2017). To study the effects of tides, we made use of POSIDONIUS (Blanco-Cuaresma & Bolmont 2017). The main free parameters that define the tidal dissipation of a given planet are the degree-2 potential Love number k_2 and its constant time lag $\Delta\tau$, where k_2 can have values between 0 and 1.5, and $\Delta\tau$ can span orders of magnitudes (Barnes 2017). Observations have revealed that the Earth’s dissipation is completely dominated by the friction induced by its topography on tidal gravito-inertial waves that propagate in the oceans (Mathis 2018). Therefore, when exploring terrestrial exoplanets under the influence of tides, the Earth’s reference value $k_{2,\oplus}\Delta\tau_{\oplus} = 213$ s (Neron de Surgy & Laskar 1997) is commonly adopted. Typically, $0.1 \times k_{2,\oplus}\Delta\tau_{\oplus}$ is used for planets without oceans, and $10 \times k_{2,\oplus}\Delta\tau_{\oplus}$ for volatile-rich planets (see e.g. Bolmont et al. 2014, 2015). This strategy allowed us to identify a range of possible tidal behaviours.

For a close-in exoplanet, it is expected that tidal torques fix the rotation rate to a specific frequency, in a process called tidal locking. A tidally-locked planet in a circular orbit will rotate synchronously, and the same side of the planet will always face the star. On the other hand, for a fluid planet, the rotation is pseudosynchronous, which means that its rotation tends to be as fast as the angular velocity at periape (hence, the same side does not always face the star). Planets that are solid, like Mercury, can be locked because of a permanent deformation into a specific resonance⁹ (see e.g. Bolmont et al. 2015; Hut 1981; Barnes 2017).

To ascertain which of these scenarios applies to TOI-1266 c, we followed the aforementioned strategy: we studied the evolution of the obliquity (ϵ) and rotational period (P_{rot}) by

⁹ In Mercury’s case, it’s the 3:2, and because of Mercury’s large e , that is near pseudosynchronous, but if Mercury had a smaller e , it could have gotten trapped into synchronous orbit.

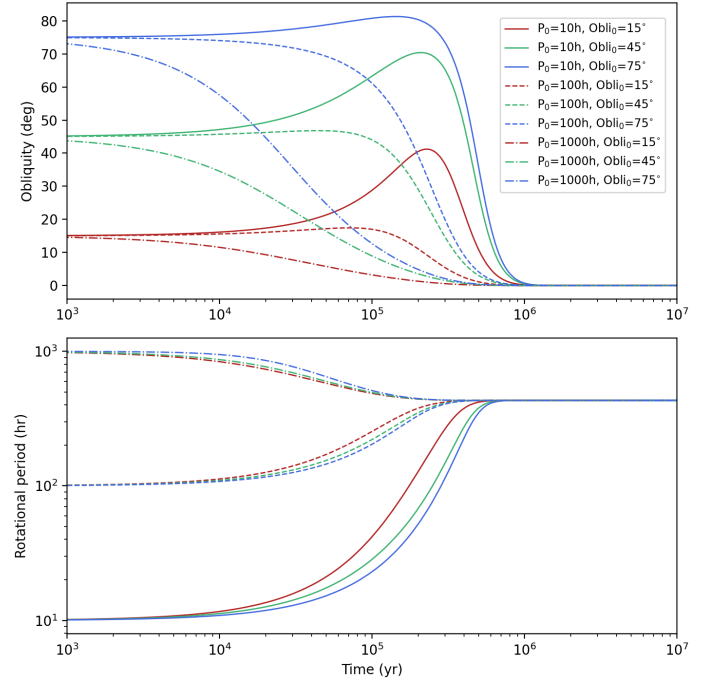


Fig. 15. Obliquity and rotational period evolution due to the effects of tides for planet TOI-1266 c for the case of $1 \times k_{2,\oplus}\Delta\tau_{\oplus}$. Each set of line-style curves represents a different initial spin-rate, and each set of coloured curves represents a different initial obliquity. It seems that for any possible combination of the initial conditions, within only a short time scale (compared with the age of the star), the planet is tidally locked.

considering a number of cases with: different initial planetary rotational periods of 10, 100, and 1000 h, combined with obliquities of 15° , 45° , and 75° , for the three cases concerning tidal dissipation: $(0.1, 1, \text{ and } 10) \times k_{2,\oplus}\Delta\tau_{\oplus}$.

We found that in all cases, the planet is tidally locked rapidly: 10^7 yr for $0.1 \times k_{2,\oplus}\Delta\tau_{\oplus}$, 10^6 yr for $1 \times k_{2,\oplus}\Delta\tau_{\oplus}$, and 10^5 yr for $10 \times k_{2,\oplus}\Delta\tau_{\oplus}$. The results for the particular case of $1 \times k_{2,\oplus}\Delta\tau_{\oplus}$ are displayed in Fig. 15. We note that the presence of a relatively large moon orbiting the planet may provoke chaotic fluctuations of its obliquity, or even impart it with another value (see e.g. Laskar & Robutel 1993; Lissauer et al. 2012b). However, it has been found that compact planetary systems are unlikely to have moons (Lissauer & Cuzzi 1985; Kane 2017), which encourages us to tentatively consider that TOI-1266 c is tidally locked and fairly well aligned with the host star.

Circularisation of the orbits due to the effects of tides is a slow process, which may last from hundreds to billion years (see e.g. Bolmont et al. 2015; Barnes 2017; Pozuelos et al. 2020). From our results of the global model, we found that the planet TOI-1266 c may have a certain level of eccentricity with a median value of 0.04. This may be provoked by the lack of time to circularise the orbit by tides (which is not explored in this study) or due to the architecture of the system, where the planets are close to the 5:3 and 2:1 MMRs, which can excite the orbits and consequently induce a marginal level of eccentricity. Hence, both planets might be experiencing some level of tidal heating. In this context, we computed for TOI-1266 c the tidal heating for the nominal eccentricity of 0.04 for $(0.1, 1, \text{ and } 10) \times k_{2,\oplus}\Delta\tau_{\oplus}$ configurations. We found that the planet is heated by 0.5 W m^{-2} for $10 \times k_{2,\oplus}\Delta\tau_{\oplus}$, 0.05 W m^{-2} for $1 \times k_{2,\oplus}\Delta\tau_{\oplus}$, and 0.005 W m^{-2} for $0.1 \times k_{2,\oplus}\Delta\tau_{\oplus}$.

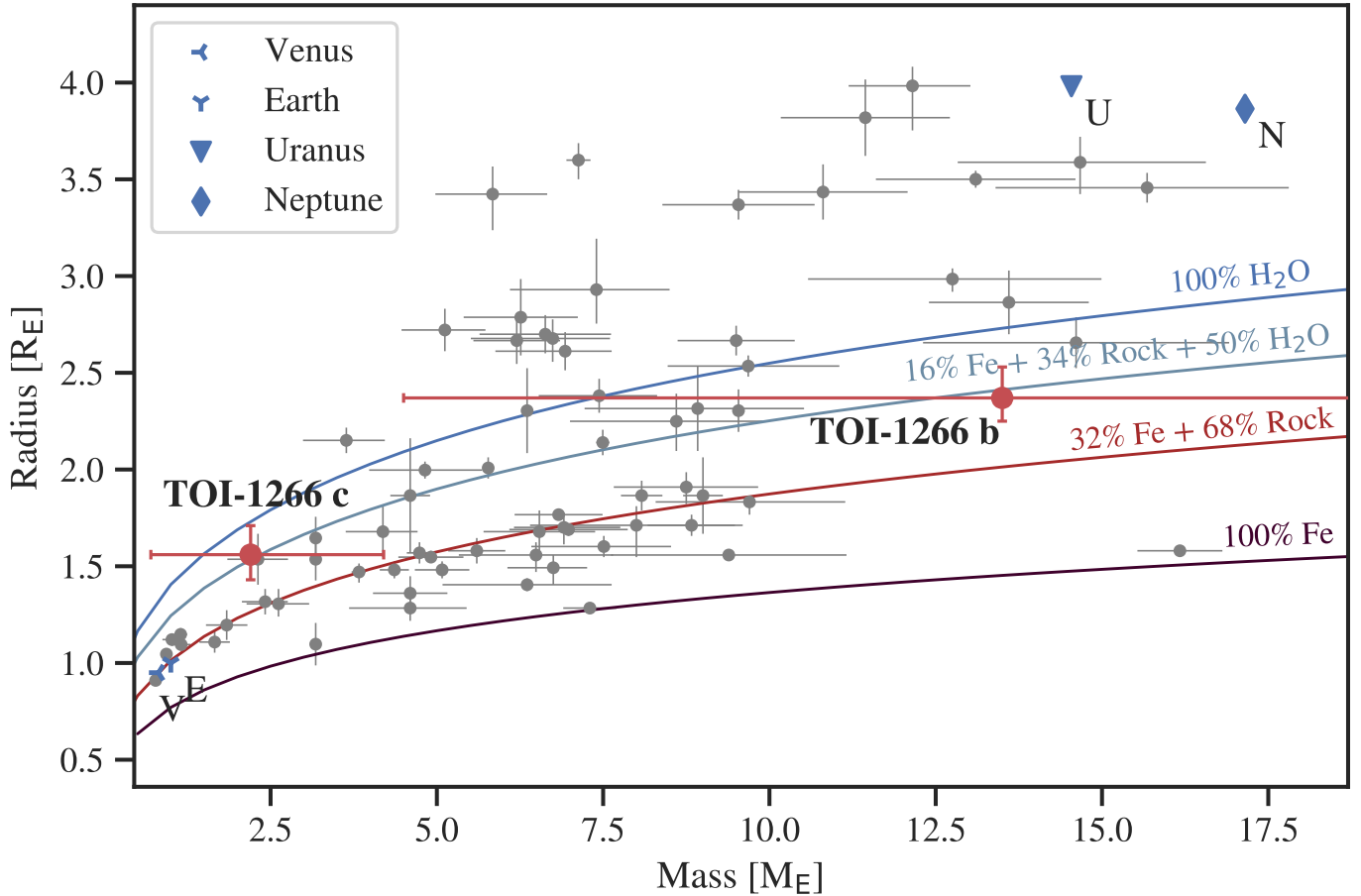


Fig. 16. TOI-1266 b and c on the mass-radius diagram based on the radii and masses derived from the transit photometry and TTV analyses. Alongside, we show mass radius curves for pure iron (brown), an Earth like composition of 32% iron, and 68% rock (red), a mixture of 50% water with an Earth like core (grey blue), and for pure water (blue). The data of the background planets were taken from the NASA Exoplanet Archive (retrieved on 2020 July 15). We show only those planets that have a relative mass and radius uncertainty of less than 20%.

Taken together, our results suggest that it is likely that the outermost planet TOI-1266 c is tidally locked, but due to its small but non-zero eccentricity, which may persist through MMR excitations, it may not have the same side always facing the star. In a recent paper by Pozuelos et al. (2020), the authors adapted the general description of the flux received by a planet given by Kane & Torres (2017) for the configuration found here, for a tidally-locked planet on a non-circular orbit. It was found that in such a configuration, the orbital phase is no longer relevant, and the distribution of flux along the latitude (β) is the same for the whole orbit, which depends only on the planet’s eccentricity. In our case, assuming the nominal value of eccentricity found in our models (i.e. 0.04) we found 3805–3242 W m^{-2} ($2.79\text{--}2.37 F_{\oplus}$) at the equator, 2691–2293 W m^{-2} ($1.97\text{--}1.68 F_{\oplus}$) at $\beta = \pm 45^\circ$, and $\sim 0 \text{ W m}^{-2}$ ($0.0 F_{\oplus}$) at the poles. These values suggest that the stellar flux received by the planet may vary by $\sim 15\%$ along its orbit. Based on dynamical arguments, this variation of $\sim 15\%$ may be considered as an upper limit. Indeed, we demonstrated that the nominal values of the eccentricities might be considered as upper limits, where the system tends to more stable scenarios for low eccentricities (see Fig. 13). At the $1\text{-}\sigma$ uncertainty level, the minimum eccentricity of TOI-1266 c is 0.01. In such a case, the variation of the flux along the orbit is only $\sim 4\%$. Hence, a plausible set of values for the variation of the flux along the orbit ranges from 4 to 15%.

6. Discussion

6.1. TOI-1266 b and c in the mass-radius diagram

In this section, we use the mass and radii constraints on TOI-1266 b and c derived from the transit photometry to investigate the location of these planets in the mass-radius diagram. We emphasise that the mass constraints will be improved once additional transit timings, or precise radial-velocity timeseries become available. However, Fig. 16 provides a first assessment on whether the derived planet properties are consistent with usual mass-radius relationships. In this figure, the composition curves were calculated with model B of Michel et al. (2020). We used for iron the equation of state of Hakim et al. (2018), for rock the model of Sotin et al. (2007) and for water the equation of state of Mazevet et al. (2019).

6.2. TOI-1266 and the radius valley

With radii of about 2.4 and 1.6 R_{\oplus} , TOI-1266 b and c span the so-called radius valley (Fulton et al. 2017). Since atmospheric evaporation is a possible explanation for the origin of the valley (Owen & Wu 2013; Lopez & Fortney 2013; Jin et al. 2014), this feature is also known as the “evaporation valley”. We note, however, that the origin for the radius valley feature is currently unconstrained and that other studies advocate, for instance, for core-powered mass loss as the driving mechanism for this pattern

(Ginzburg et al. 2018; Gupta & Schlichting 2020). The recent discovery of a change in the fraction of planets above and below the valley over \sim Gyr timescales has indeed been interpreted in favour of the core-powered mass loss scenario for some solar-type stars (Berger et al. 2020), although there is evidence that the formation pathway may be different in low-mass stars (Cloutier & Menou 2020).

Planets in multiple systems with dissimilar radii, like TOI-1266 b & c, Kepler-36 b & c (Carter et al. 2012) or TOI-402 b & c (Dumusque et al. 2019), are of particular interest to understand the origin of the radius valley, as they allow to study the differential evolutionary history of the planets, and to check whether evaporation can self-consistently explain all the planets in a system (Lopez et al. 2012; Lopez & Fortney 2013; Owen & Campos Estrada 2020).

To understand the implication of the hypothesis that evaporation has shaped the distinct radii of TOI-1266 b & c, we simulated their long-term thermodynamical evolution (cooling, contraction, atmospheric escape) with the Bern evolution model complete21 (Mordasini et al. 2012; Jin et al. 2014; Jin & Mordasini 2018).

The model simulates the long-term evolution of the planets after the dissipation of the protoplanetary disc by solving the internal structure equations of the planets. It includes XUV-driven atmospheric photoevaporation in the radiation-recombination and energy-limited regimes (Murray-Clay et al. 2009).

The planets consist of a solid core and a H/He envelope, and we assumed that their cores have an Earth-like 2:1 silicate:iron composition described by the polytropic equation of state (EOS) of Seager et al. (2007).

The gaseous envelope consists of H/He, described by the EOS of Saumon et al. (1995), and the opacity corresponds to a condensate-free solar-composition gas (Freedman et al. 2014).

As in Mordasini (2020), we simulated the evolution of 6000 planets on a grid of semi-major axis and mass. The initial conditions (i.e. the post-formation envelope – core mass ratio and luminosity) are the same as in the nominal case considered in Mordasini (2020), but the stellar mass is now $0.5 M_{\odot}$. The stellar XUV luminosity as a function of time was taken from McDonald et al. (2019).

Figure 17 shows the result in the plane of orbital distance versus planet radius at an age of 10 Gyr, where the evaporation valley is apparent. Planets above this threshold retain some H/He, while those below become bare rocky cores. In the top left corner, the region devoid of planets corresponds to the sub-Neptunian desert (Lundkvist et al. 2016; Mazeh et al. 2016; Bourrier et al. 2018).

TOI-1266 b & c are also shown as black squares. Planet b is located clearly above the valley, while planet c’s median radius sits just underneath. This position corresponds to the most massive (and largest) cores at a given semi-major axis that have lost their H/He.

The interesting property of TOI-1266 is that the inner planet is larger than the outer one. In the context of evaporation, this can be explained if the inner planet is also more massive than the outer one. The higher mass allows for the planet to keep its H/He envelope even at a higher XUV flux. We thus studied the masses of model planets that are compatible with TOI-1266 b & c in terms of orbital distance and radius in Fig. 17, and find that these model planets have masses of about $10 \pm 1.5 M_{\oplus}$ for planet b, and $6_{-2}^{+1} M_{\oplus}$ for planet c, which is consistent with the masses derived using our TTV measurements (Sect. 5.2.1). These specific numbers depend on model assumptions, such as the core

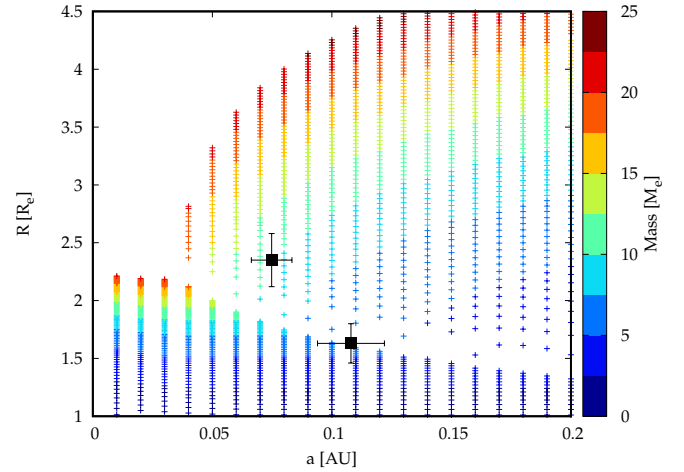


Fig. 17. Comparison of TOI-1266 b & c with evaporation models. The coloured dots show the position in the plane of semi-major axis versus radius of simulated planets evolving under the effect of cooling, contraction, and atmospheric escape around a $0.5 M_{\odot}$ star at an age of 10 Gyr. One sees the radius valley and the sub-Neptunian desert. The colours show the planet mass. Black symbols show TOI-1266 b & c.

and envelope composition, the initial conditions, or the evaporation model. But the general result, namely that the inner planet should be more massive, is robust.

We note that Fig. 17 has been obtained with an evaporation model that assumes a constant evaporation efficiency in the energy limited domain. It is known (Owen & Wu 2017) that this yields a steeper slope (R vs a) for the evaporation valley than the one found in models which calculate the evaporation efficiency self-consistently (Owen & Jackson 2012). This shallower slope is also in better agreement with observations (Mordasini 2020). This affects the prediction for the mass ratios of the two planets; in particular, a shallow slope means that the two masses can be more similar than estimated above. If we assume that the slope of the valley is instead the same as the slope observed for FGK stars (Van Eylen et al. 2018; Cloutier & Menou 2020), and not the one predicted in the model, then we can estimate that the inner planet must have a mass that is at least 25% higher than the mass of the outer planet (Mordasini 2020). Then, the inner planet can keep some H/He.

6.3. Potential for atmospheric characterisation

The potential for atmospheric characterisation of an exoplanetary system relates directly to the size and brightness of the host: the smaller and brighter the host, the larger the signal in transmission and photon count (i.e. S/N), all other parameters being equal. TOI-1266’s relatively small size and proximity makes it a remarkably good host for the atmospheric study of super-Earth-sized and larger planets. In order to quantify and contextualise its prospect for atmospheric study, we followed the same approach as in Gillon et al. (2016), focusing here on temperate sub-Neptune-sized planets following the NASA Exoplanet Archive¹⁰. Figure 18 reports the planets’ signal in transmission, which we derive as follows:

$$S = \frac{2R_p h_{\text{eff}}}{R_*^2}, \quad \text{with} \quad h_{\text{eff}} = \frac{7kT}{\mu g}, \quad (4)$$

¹⁰ <https://exoplanetarchive.ipac.caltech.edu>

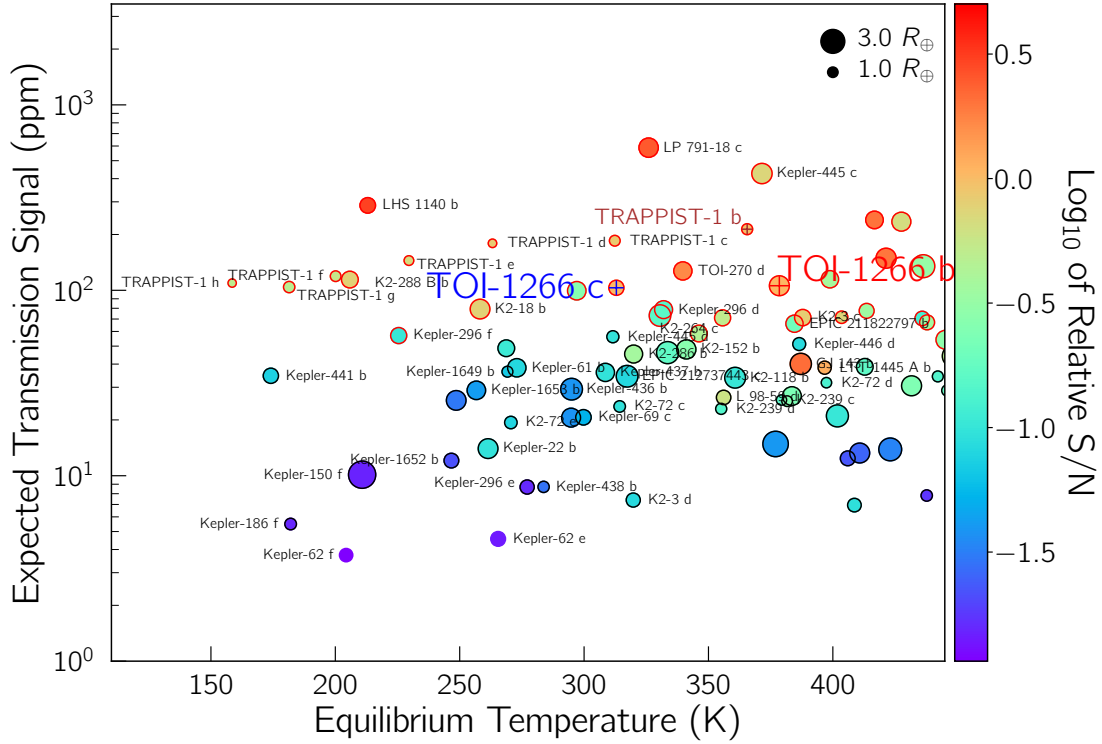


Fig. 18. Most promising sub-Neptune-sized planets for atmospheric characterisation. Point colours illustrate the S/N of a JWST/NIRSPEC observation relative to TRAPPIST-1 b. S/N below 1/100th of TRAPPIST-1 b have been removed to enhance readability of the figure. The planets for which the presence of an atmosphere could be assessed by JWST within ~ 100 h are encircled in red, if their atmospheric signals are above JWST’s threshold of ~ 50 ppm. The size of the circle is proportional to the size of the planet.

where R_p is the planetary radius, R_* is the stellar radius, h_{eff} is the effective atmospheric height, μ is the atmospheric mean molecular mass, T is the atmospheric temperature, and g is the local gravity. We assume h_{eff} to cover seven atmospheric scale heights, assuming atmospheres down to ~ 0.1 bar. We assume the atmospheric mean molecular mass to be 2.3 amu for planets larger than $1.6 R_{\oplus}$, which we model as sub-Neptunes, and 20 amu for the smaller planets, which we model as terrestrial. We assume the atmospheric temperature to be the equilibrium temperature for a Bond albedo of 0. For the planets with missing masses, we estimated g using the statistical model from [Chen & Kipping \(2017\)](#).

TOI-1266 b and c’s projected signals in transmission are ~ 220 and ~ 100 ppm, which are significantly above JWST’s plausible noise floor level (20–50 ppm; [Greene et al. 2016](#)). In order to quantify this further, we also report in Fig. 18 a relative S/N scaling the signal amplitude with the hosts’ brightness in the J band and using TRAPPIST-1 b’s S/N as a reference. We find that TOI-1266’s planets compare favourably to TRAPPIST-1b in terms of potential for atmospheric exploration. In fact, assessing the presence of a clear hydrogen-dominated atmosphere as assumed for the purpose of this discussion would require 1 and 4 transits for planet b and c, respectively, with JWST NIRSpec Prism mode.

However, this preliminary assessment could be complicated by at least two factors. A first obstacle of transmission spectroscopy is refraction, which bends starlight away from the line of the sight to the observer. In a transmission spectrum, this has a similar effect to an opaque cloud with a “cloud-top pressure” ([Sidis & Sari 2010](#)), which introduces a spectral continuum that mutes the strength of spectral features. To determine if this effect is significant, we use Eq. (14) and Table 1 of [Robinson et al.](#)

(2017) to estimate the pressure corresponding to this refraction continuum. For nitrogen-dominated atmospheres, we estimate this pressure to be 1.3 and 0.8 bar for TOI-1266 b and TOI-1266 c, respectively, if we assume $g \sim 10^3 \text{ cm s}^{-2}$ and $T \sim T_{\text{eq}}$. For carbon dioxide-dominated atmospheres, we estimate this pressure to be 0.7 and 0.4 bar for TOI-1266 b and TOI-1266 c, respectively. Since transmission spectroscopy probes pressures ~ 1 –10 mbar or lower, we therefore expect refraction to have a negligible effect on the shape of the transmission spectra for TOI-1266 b and TOI-1266 c. Given the low equilibrium temperatures, a second obstacle may be the presence of clouds or hazes that are likely to strongly shape the transmission spectra of these weakly-irradiated exoplanets (see e.g. [Crossfield & Kreidberg 2017](#), and references therein).

We finally note that the planets of TOI-1266 are attractive targets for transmission spectroscopy due to the small geometric size of and lack of activity of the host star. More active M dwarfs like TRAPPIST-1 pose significant challenges to transmission spectroscopy, since the stellar surface features emit different spectra from the mean photosphere, introducing a degenerate signal that one must disentangle to correctly identify the signal from the exoplanet atmosphere ([Morris et al. 2018a,b,c](#); [Ducrot et al. 2018](#); [Wakeford et al. 2019](#)). TOI-1266 has no photometric evidence of these confounding starspot signatures, and therefore, makes a clean case for transmission spectroscopy.

6.4. Prospects for radial velocity follow-up and additional TESS data

Radial velocities (RVs) are likely to become available for this target in the future. It is critical to obtain precise masses and thus bulk densities for planets with sub-Neptune radii to identify if

they are evaporated giants or giant rocks, so that we may identify model atmospheres to apply to the transmission spectroscopy. This requirement for a reliable mass constraint will be one of the fundamental limitations in choosing sub-Neptune targets for observations with JWST (Batalha et al. 2017). For this system, we might have some certainty about whether or not these are evaporated giants, which will strengthen our interpretations of the transmission spectra.

In addition, we might be able to measure the Rossiter-McLaughlin effect for this system, due to its brightness and lack of confounding stellar activity. The obliquity of the system would be a valuable addition to the recent observation by Hirano et al. (2020) that the TRAPPIST-1 planets are well-aligned with the host star's spin.

We finally note that as of writing, TOI-1266 will not be observed by TESS during Sectors 23-26 nor during Extended Mission 1.

7. Conclusions

This study reports on the discovery and preliminary characterisation of the TOI-1266 system that hosts a super-Earth and a sub-Neptune around a M3 dwarf. Our analysis combines photometry obtained from space- and ground-based facilities with a careful treatment of instrumental systematics and correlated noise for each dataset. The resulting data enable us to compute preliminary mass measurements for both planets, investigate their tidal evolution and search for additional companions in the system. Along with other recently discovered TESS exoplanets (e.g. Cloutier et al. 2020; Cloutier & Menou 2020), TOI-1266 will likely become a key system to better understand the nature of the radius valley around early to mid-M dwarfs. First, its orbital architecture, influenced by the 2:1 mean-motion resonance, will facilitate the measurement of precise planetary masses with high-precision photometry (TTV) and Doppler spectroscopy (radial velocities). Second, the host brightness is such that the system will be observable in most JWST modes, hence providing a large wavelength coverage. Third, the outer planet TOI-1266 c has an irradiation level that is similar to that of Venus and is also a favourable target for atmospheric characterisation. We also note that TOI-1266 c may be tidally-locked but with a non-circular orbit, resulting in incident stellar flux varying at a few percent level only along its orbit. Such a configuration would also lead to more homogeneous longitudinal temperature differences, in stark contrast with the bulk of small transiting exoplanets discovered so far.

Acknowledgements. We warmly thank the entire technical staff of the Observatorio Astronómico Nacional at San Pedro Mártir in México for their unfailing support to SAINT-EX operations, namely: U. Ceseña, A. Córdoba, B. García, C.A. Guerrero, F. Guillén, J.A. Hernández, B. Hernández, E. López, B. Martínez, G. Melgoza, F. Montalvo, S. Monroy, J.C. Narvaez, J.M. Nuñez, J.L. Ochoa, I. Plauchú, F. Quiroz, H. Serrano, T. Verdugo. We gratefully acknowledge the support from the Embassy of México in Bern to the SAINT-EX project. We also thank the past members of the SAINT-EX team B. Courcol, E. Rose and K. Housen for their help in the course of the project. We are grateful to the anonymous referee for a thorough and helpful review of our paper. We thank Jonathan Irwin for his help on the TRES data analysis. B.-O.D. acknowledges support from the Swiss National Science Foundation (PP00P2-163967). This work has been carried out within the frame of the National Centre for Competence in Research PlanetS supported by the Swiss National Science Foundation. Y.G.M.C acknowledges support from UNAM-PAPIIT IN-107518. R.P. and E.J. acknowledge DGAPA for their postdoctoral fellowships. The research leading to these results has received funding from the ARC grant for Concerted Research Actions, financed by the Wallonia-Brussels Federation. TRAPPIST is funded by the Belgian Fund for Scientific Research (Fonds National de la Recherche Scientifique, FNRS) under the grant FRFC 2.5.594.09.F, with the participation

of the Swiss National Science Foundation (SNF). TRAPPIST-North is a project funded by the University of Liege, and performed in collaboration with Cadi Ayyad University of Marrakesh. M.G. and E.J. are F.R.S.-FNRS Senior Research Associates. J.C.S. acknowledges funding support from Spanish public funds for research under projects ESP2017-87676-2-2 and RYC-2012-09913 (Ramón y Cajal programme) of the Spanish Ministry of Science and Education. This paper includes data collected by the TESS mission. We acknowledge the use of public TOI Release data from pipelines at the TESS Science Office and at the TESS Science Processing Operations Center. Funding for the TESS mission is provided by the NASA Explorer Program. Resources supporting this work were provided by the NASA High-End Computing (HEC) Program through the NASA Advanced Supercomputing (NAS) Division at Ames Research Center for the production of the SPOC data products. This work is based upon observations carried out at the Observatorio Astronómico Nacional on the Sierra de San Pedro Mártir (OAN-SPM), Baja California, México. This research has been partly funded by the Spanish State Research Agency (AEI) Projects No.ESP2017-87676-C5-1-R and No. MDM-2017-0737 Unidad de Excelencia “María de Maeztu”- Centro de Astrobiología (INTA-CSIC). This paper is based on observations collected at Centro Astronómico Hispano en Andalucía (CAHA) at Calar Alto, operated jointly by Instituto de Astrofísica de Andalucía (CSIC) and Junta de Andalucía. The research leading to these results has received funding from the European Research Council under the European Union’s Seventh Framework Programme (FP/2007-2013) ERC Grant Agreement n° 336480 (SPECULOOS). D.H. acknowledges support from the Alfred P. Sloan Foundation, the National Aeronautics and Space Administration (80NSSC18K1585, 80NSSC19K0379), and the National Science Foundation (AST-1717000). We finally acknowledge support from the *Antoine de Saint-Exupéry Youth Foundation* through their involvement in the educational programme of the SAINT-EX Observatory.

References

- Agol, E., & Fabrycky, D. C. 2017, *Handbook of Exoplanets* (Cham: Springer), 7
- Agol, E., Steffen, J., Sari, R., & Clarkson, W. 2005, *MNRAS*, **359**, 567
- Aigrain, S., Parviainen, H., & Pope, B. J. S. 2016, *MNRAS*, **459**, 2408
- Alam, S., Albareti, F. D., Allende Prieto, C., et al. 2015, *ApJS*, **219**, 12
- Aller, A., Lillo-Box, J., Jones, D., Miranda, L. F., & Barceló Forzeza, S. 2020, *A&A*, **635**, A128
- Astropy Collaboration (Robitaille, T. P., et al.) 2013, *A&A*, **558**, A33
- Astropy Collaboration (Price-Whelan, A. M., et al.) 2018, *AJ*, **156**, 123
- Baraffe, I., Homeier, D., Allard, F., & Chabrier, G. 2015, *A&A*, **577**, A42
- Barkaoui, K., Burdanov, A., Hellier, C., et al. 2019, *AJ*, **157**, 43
- Barnes, R. 2017, *Celest. Mech. Dyn. Astron.*, **129**, 509
- Batalha, N. E., Kempton, E. M.-R., & Mbarek, R. 2017, *ApJ*, **836**, L5
- Berger, T. A., Huber, D., Gaidos, E., van Saders, J. L., & Weiss, L. M. 2020, *AJ*, **160**, 108
- Blanco-Cuaresma, S., & Bolmont, E. 2017, EWASS Special Session 4 (2017): Star-planet interactions (EWASS-SS4-2017)
- Bolmont, E., Raymond, S. N., von Paris, P., et al. 2014, *ApJ*, **793**, 3
- Bolmont, E., Raymond, S. N., Lecante, J., Hersant, F., & Correia, A. C. M. 2015, *A&A*, **583**, A116
- Bourrier, V., Lecavelier des Etangs, A., Ehrenreich, D., et al. 2018, *A&A*, **620**, A147
- Bradley, L., Sipőcz, B., Robitaille, T., et al. 2019, *astropy/photutils: v0.6*
- Brown, A. G. A., Vallenari, A., Prusti, T., et al. 2018, *A&A*, **616**, A1
- Buchhave, L. A., Bakos, G. Á., Hartman, J. D., et al. 2010, *ApJ*, **720**, 1118
- Carter, J. A., Agol, E., Chaplin, W. J., et al. 2012, *Science*, **337**, 556
- Chambers, J. E. 1999, *MNRAS*, **304**, 793
- Chen, J., & Kipping, D. 2017, *ApJ*, **834**, 17
- Choi, J., Dotter, A., Conroy, C., et al. 2016, *ApJ*, **823**, 102
- Cincotta, P., & Simó, C. 1999, *Celest. Mech. Dyn. Astron.*, **73**, 195
- Cincotta, P. M., & Simó, C. 2000, *A&AS*, **147**, 205
- Cincotta, P. M., Giordano, C. M., & Simó, C. 2003, *Phys. D Nonlinear Phenom.*, **182**, 151
- Cloutier, R., & Menou, K. 2020, *AJ*, **159**, 211
- Cloutier, R., Eastman, J. D., Rodríguez, J. E., et al. 2020, *AJ*, **160**, 3
- Collins, K. A., Kielkopf, J. F., Stassun, K. G., & Hessman, F. V. 2017, *AJ*, **153**, 77
- Crossfield, I. J. M., & Kreidberg, L. 2017, *AJ*, **154**, 261
- Cutri, R. M., Skrutskie, M. F., van Dyk, S., et al. 2003, 2MASS All Sky Catalog of point sources
- Cutri, R. M., Skrutskie, M. F., van Dyk, S., et al. 2013, VizieR Online Data Catalog, **II/328**
- Delrez, L., Gillon, M., Queloz, D., et al. 2018, *SPIE Conf. Ser.*, **10700**, 1070011
- Demory, B.-O., Gillon, M., Seager, S., et al. 2012, *ApJ*, **751**, L28
- Dorn, C., Venturini, J., Khan, A., et al. 2017, *A&A*, **597**, A37
- Dotter, A. 2016, *ApJS*, **222**, 8

- Ducrot, E., Sestovic, M., Morris, B. M., et al. 2018, *AJ*, **156**, 218
- Dumusque, X., Turner, O., Dorn, C., et al. 2019, *A&A*, **627**, A43
- Eastman, J. D., Rodriguez, J. E., Agol, E., et al. 2019, *PASP*, submitted [arXiv:1907.09480]
- Eggleton, P. P., Kiseleva, L. G., & Hut, P. 1998, *ApJ*, **499**, 853
- Eisner, N. L., Barragán, O., Aigrain, S., et al. 2020, *MNRAS*, **494**, 750
- Freedman, R. S., Lustig-Yaeger, J., Fortney, J. J., et al. 2014, *ApJS*, **214**, 25
- Fried, D. L. 1978, *J. Opt. Soc. Am.* **1917-1983**, **68**, 1651
- Fulton, B. J., Petigura, E. A., Howard, A. W., et al. 2017, *AJ*, **154**, 109
- Furesz, G. 2008, PhD thesis, University of Szeged, Hungary
- Gaia Collaboration (Brown, A. G. A., et al.) 2018, *A&A*, **616**, A1
- Gavel, D., Kupke, R., Dillon, D., et al. 2014, *Proc. SPIE*, **9148**, 914805
- Gelman, & Rubin. 1992, *Stat. Sci.*, **7**, 457
- Giacalone, S., & Dressing, C. D. 2020, AAS J., submitted [arXiv:2002.00691]
- Gillon, M., Triaud, A. H. M. J., Fortney, J. J., et al. 2012, *A&A*, **542**, A4
- Gillon, M., Anderson, D. R., Collier-Cameron, A., et al. 2013, *A&A*, **552**, A82
- Gillon, M., Demory, B.-O., Madhusudhan, N., et al. 2014, *A&A*, **563**, A21
- Gillon, M., Jehin, E., Lederer, S. M., et al. 2016, *Nature*, **533**, 221
- Ginzburg, S., Schlichting, H. E., & Sari, R. 2018, *MNRAS*, **476**, 759
- Greene, T. P., Line, M. R., Montero, C., et al. 2016, *ApJ*, **817**, 17
- Grimm, S. L., & Stadel, J. G. 2014, *ApJ*, **796**, 23
- Grimm, S. L., Demory, B.-O., Gillon, M., et al. 2018, *A&A*, **613**, A68
- Guerrero, et al. 2020, AAS J., submitted
- Güntner, M. N., Pozuelos, F. J., Dittmann, J. A., et al. 2019, *Nat. Astron.*, **3**, 1099
- Gupta, A., & Schlichting, H. E. 2020, *MNRAS*, **493**, 792
- Hakim, K., Rivoldini, A., Van Hoolst, T., et al. 2018, *Icarus*, **313**, 61
- Hauschildt, P. H., Allard, F., & Baron, E. 1999, *ApJ*, **512**, 377
- Hawley, S. L., Davenport, J. R. A., Kowalski, A. F., et al. 2014, *ApJ*, **797**, 121
- Heller, R., Hippke, M., & Rodenbeck, K. 2019, *A&A*, **627**, A66
- Hinse, T. C., Haghighipour, N., Kostov, V. B., & Goździewski, K. 2015, *ApJ*, **799**, 88
- Hippke, M., & Heller, R. 2019, *A&A*, **623**, A39
- Hippke, M., David, T. J., Mulders, G. D., & Heller, R. 2019, *AJ*, **158**, 143
- Hirano, T., Gaidos, E., Winn, J. N., et al. 2020, *ApJ*, **890**, L27
- Holman, M. J. 2005, *Science*, **307**, 1288
- Holman, M. J., & Wiegert, P. A. 1999, *AJ*, **117**, 621
- Hormuth, F., Brandner, W., Hippler, S., & Henning, T. 2008, *J. Phys. Conf. Ser.*, **131**, 012051
- Horner, J., Wittenmyer, R. A., Wright, D. J., et al. 2019, *AJ*, **158**, 100
- Husser, T. O., Wende-von Berg, S., Dreizler, S., et al. 2013, *A&A*, **553**, A6
- Hut, P. 1981, *A&A*, **99**, 126
- Janson, M., Bonavita, M., Klahr, H., et al. 2011, *ApJ*, **736**, 89
- Jehin, E., Gillon, M., Queloz, D., et al. 2011, *The Messenger*, **145**, 2
- Jehin, E., Gillon, M., Queloz, D., et al. 2018, *The Messenger*, **174**, 2
- Jenkins, J. M. 2002, *ApJ*, **575**, 493
- Jenkins, J. S., Jones, H. R., Goździewski, K., et al. 2009, *MNRAS*, **398**, 911
- Jenkins, J. M., Twicken, J. D., McCauliff, S., et al. 2016, *SPIE Conf. Ser.*, **9913**, 99133E
- Jenkins, J. M., Tenenbaum, P., Seader, S., et al. 2017, *Kepler Data Processing Handbook: Transiting Planet Search*, Kepler Science Document (California: NASA)
- Jenkins, J. S., Pozuelos, F. J., Tuomi, M., et al. 2019, *MNRAS*, **490**, 5585
- Jensen, E. 2013, *Astrophysics Source Code Library* [record ascl:1306.007]
- Jin, S., & Mordasini, C. 2018, *ApJ*, **853**, 163
- Jin, S., Mordasini, C., Parmentier, V., et al. 2014, *ApJ*, **795**, 65
- Jofré, E., Petrucci, R., Saffe, C., et al. 2015, *A&A*, **574**, A50
- Kane, S. R. 2015, *ApJ*, **814**, L9
- Kane, S. R. 2017, *ApJ*, **839**, L19
- Kane, S. R. 2019, *AJ*, **158**, 72
- Kane, S. R., & Torres, S. M. 2017, *AJ*, **154**, 204
- Kiseleva, L. G., Eggleton, P. P., & Mikkola, S. 1998, *MNRAS*, **300**, 292
- Kolbl, R., Marcy, G. W., Isaacson, H., & Howard, A. W. 2014, *AJ*, **149**, 18
- Kostov, V. B., Schlieder, J. E., Barclay, T., et al. 2019, *AJ*, **158**, 32
- Kozai, Y. 1962, *AJ*, **67**, 579
- Kubyskhina, D., Cubillos, P. E., Fossati, L., et al. 2019, *ApJ*, **879**, 26
- Lang, D., Hogg, D. W., Mierle, K., Blanton, M., & Roweis, S. 2010, *AJ*, **139**, 1782
- Laskar, J., & Robutel, P. 1993, *Nature*, **361**, 608
- Latham, D. W., Rowe, J. F., Quinn, S. N., et al. 2011, *ApJ*, **732**, L24
- Leconte, J., Chabrier, G., Baraffe, I., & Levrard, B. 2010, *A&A*, **516**, A64
- Li, J., Tenenbaum, P., Twicken, J. D., et al. 2019, *PASP*, **131**, 024506
- Lidov, M. L. 1962, *Planet. Space Sci.*, **9**, 719
- Lightcurve Collaboration (Cardoso, J. V. d. M., et al.) 2018, *Astrophysics Source Code Library* [record ascl:1812.013]
- Lillo-Box, J., Barrado, D., & Bouy, H. 2012, *A&A*, **546**, A10
- Lillo-Box, J., Barrado, D., & Bouy, H. 2014, *A&A*, **566**, A103
- Lissauer, J. J., & Cuzzi, J. N. 1985, in *Protostars and Planets II*, eds. D. C. Black, & M. S. Matthews (Tucson, AZ: University of Arizona Press), 920
- Lissauer, J. J., Marcy, G. W., Rowe, J. F., et al. 2012a, *ApJ*, **750**, 112
- Lissauer, J. J., Barnes, J. W., & Chambers, J. E. 2012b, *Icarus*, **217**, 77
- Lithwick, Y., Xie, J., & Wu, Y. 2012, *ApJ*, **761**, 122
- Lopez, E. D., & Fortney, J. J. 2013, *ApJ*, **776**, 2
- Lopez, E. D., Fortney, J. J., & Miller, N. 2012, *ApJ*, **761**, 59
- Lundkvist, M. S., Kjeldsen, H., Albrecht, S., et al. 2016, *Nat. Commun.*, **7**, 11201
- Maldonado, J., Affer, L., Micela, G., et al. 2015, *A&A*, **577**, A132
- Mann, A. W., Dupuy, T., Kraus, A. L., et al. 2019, *ApJ*, **871**, 63
- Marois, C., Lafreniere, D., Doyon, R., Macintosh, B., & Nadeau, D. 2006, *ApJ*, **641**, 556
- Mathis, S. 2018, *Handbook of Exoplanets* (Cham: Springer), 24
- Mazeh, T., Holczer, T., & Faigler, S. 2016, *A&A*, **589**, A75
- Mazevet, S., Licari, A., Chabrier, G., & Potekhin, A. Y. 2019, *A&A*, **621**, A128
- McCormac, J., Pollacco, D., Skillen, I., et al. 2013, *PASP*, **125**, 548
- McDonald, G. D., Kreidberg, L., & Lopez, E. 2019, *ApJ*, **876**, 22
- McGurk, R., Rokosi, C., Gavel, D., et al. 2014, *Proc. SPIE*, **9148**, 91483A
- Michel, A., Haldemann, J., Mordasini, C., & Alibert, Y. 2020, *A&A*, **639**, A66
- Mignard, F. 1979, *Moon Planets*, **20**, 301
- Modirrousta-Galian, D., Locci, D., & Micela, G. 2020, *ApJ*, **891**, 158
- Mordasini, C. 2020, *A&A*, **638**, A52
- Mordasini, C., Alibert, Y., Klahr, H., & Henning, T. 2012, *A&A*, **547**, A111
- Morris, R. L., Twicken, J. D., Smith, J. C., et al. 2017, *Kepler Data Processing Handbook: Photometric Analysis*, Kepler Science Document (California: NASA)
- Morris, B. M., Agol, E., Davenport, J. R. A., & Hawley, S. L. 2018a, *ApJ*, **857**, 39
- Morris, B. M., Agol, E., Hebb, L., & Hawley, S. L. 2018b, *AJ*, **156**, 91
- Morris, B. M., Agol, E., Hebb, L., et al. 2018c, *ApJ*, **863**, L32
- Morton, T. D. 2012, *ApJ*, **761**, 6
- Morton, T. D. 2015, *Astrophysics Source Code Library* [record ascl:1503.011]
- Morton, T. D., Bryson, S. T., Coughlin, J. L., et al. 2016, *ApJ*, **822**, 86
- Morzinski, K. M., Males, J. R., Skemer, A. J., et al. 2015, *ApJ*, **815**, 108
- Murray-Clay, R. A., Chiang, E. I., & Murray, N. 2009, *ApJ*, **693**, 23
- Neron de Surgy, O., & Laskar, J. 1997, *A&A*, **318**, 975
- Newton, E. R., Irwin, J., Charbonneau, D., et al. 2016, *ApJ*, **821**, 93
- Newton, E. R., Mondrik, N., Irwin, J., Winters, J. G., & Charbonneau, D. 2018, *AJ*, **156**, 217
- Newville, M., Stensitzki, T., Allen, D. B., & Ingarciola, A. 2014, *LMFIT: Non-Linear Least-Square Minimization and Curve-Fitting for Python*
- Nielsen, E. L., Close, L. M., Biller, B. A., Masciadri, E., & Lenzen, R. 2008, *ApJ*, **674**, 466
- Owen, J. E., & Campos Estrada, B. 2020, *MNRAS*, **491**, 5287
- Owen, J. E., & Jackson, A. P. 2012, *MNRAS*, **425**, 2931
- Owen, J. E., & Wu, Y. 2013, *ApJ*, **775**, 105
- Owen, J. E., & Wu, Y. 2017, *ApJ*, **847**, 29
- Parviainen, H., & Aigrain, S. 2015, *MNRAS*, **453**, 3821
- Pedregosa, F., Varoquaux, G., Gramfort, A., et al. 2011, *J. Mach. Learn. Res.*, **12**, 2825
- Pont, F., Zucker, S., & Queloz, D. 2006, *MNRAS*, **373**, 231
- Pozuelos, F. J., Suárez, J. C., de Elía, G. C., et al. 2020, *A&A*, **641**, A23
- Press, W. H., Teukolsky, S. A., Vetterling, W. T., & Flannery, B. P. 1992, *Numerical recipes in FORTRAN. The art of scientific computing* (Cambridge: Cambridge University Press)
- Reddy, B. E., Lambert, D. L., & Allende Prieto, C. 2006, *MNRAS*, **367**, 1329
- Rein, H., & Liu, S. F. 2012, *A&A*, **537**, A128
- Rein, H., & Tamayo, D. 2015, *MNRAS*, **452**, 376
- Ricker, G. R., Winn, J. N., Vanderspek, R., et al. 2015, *J. Astron. Telesc. Instrum. Syst.*, **1**, 014003
- Robinson, T. D., Fortney, J. J., & Hubbard, W. B. 2017, *ApJ*, **850**, 128
- Saunon, D., Chabrier, G., & van Horn, H. M. 1995, *ApJS*, **99**, 713
- Scargle, J. D. 1982, *ApJ*, **263**, 835
- Schlafly, E. F., & Finkbeiner, D. P. 2011, *ApJ*, **737**, 103
- Seager, S., Kuchner, M., Hier-Majumder, C. A., & Militzer, B. 2007, *ApJ*, **669**, 1279
- Sidis, O., & Sari, R. 2010, *ApJ*, **720**, 904
- Smith, J. C., Stumpe, M. C., Van Cleve, J. E., et al. 2012, *PASP*, **124**, 1000
- Sotin, C., Gasset, O., & Mocquet, A. 2007, *Icarus*, **191**, 337
- Stassun, K. G., & Torres, G. 2016, *AJ*, **152**, 180
- Stassun, K. G., & Torres, G. 2018, *ApJ*, **862**, 61
- Stassun, K. G., Collins, K. A., & Gaudi, B. S. 2017, *AJ*, **153**, 136
- Stassun, K. G., Oelkers, R. J., Pepper, J., et al. 2018, *AJ*, **156**, 102
- Steffansson, G., Kopparapu, R., Lin, A., et al. 2020, AAS J., submitted [arXiv:2006.11180]
- Steffen, J. 2006, PhD dissertation, University of Washington, Washington, USA
- Strehl, K. 1902, *Astron. Nachr.*, **158**, 89
- Stumpe, M. C., Smith, J. C., Van Cleve, J. E., et al. 2012, *PASP*, **124**, 985
- Stumpe, M. C., Smith, J. C., Catanzarite, J. H., et al. 2014, *PASP*, **126**, 100

- Ter Braak, C. J. F. 2006, *Stat. Comput.*, **16**, 239
- Twicken, J. D., Clarke, B. D., Bryson, S. T., et al. 2010, *SPIE Conf. Ser.*, **7740**, 774023
- Twicken, J. D., Catanzarite, J. H., Clarke, B. D., et al. 2018, *PASP*, **130**, 064502
- Van Eylen, V., Agentoft, C., Lundkvist, M. S., et al. 2018, *MNRAS*, **479**, 4786
- Vogt, S. S., Allen, S. L., Bigelow, B. C., et al. 1994, *SPIE Conf. Ser.*, **2198**, 362
- Vrugt, J. A., Braak, C. J. F. T., Diks, C. G. H., et al. 2009, *Treatment of forcing data error using MCMC sampling*
- Wakeford, H. R., Lewis, N. K., Fowler, J., et al. 2019, *AJ*, **157**, 11
- Wang, J., Fischer, D. A., Xie, J.-W., & Ciardi, D. R. 2015, *ApJ*, **813**, 130
- Winn, J. N., Holman, M. J., Torres, G., et al. 2008, *ApJ*, **683**, 1076
- Wood, J., Horner, J., Hinse, T. C., & Marsden, S. C. 2017, *AJ*, **153**, 245
- Wu, Y., Murray, N. W., & Ramsahai, J. M. 2007, *ApJ*, **670**, 820
- Yee, S. W., Petigura, E. A., & Von Braun, K. 2017, *ApJ*, **836**, 77
- Zacharias, N., Finch, C. T., Girard, T. M., et al. 2013, *AJ*, **145**, 44
-
- ¹ Center for Space and Habitability, University of Bern, Gesellschaftsstrasse 6, 3012 Bern, Switzerland
e-mail: brice.demory@csh.unibe.ch
- ² Space Sciences, Technologies and Astrophysics Research (STAR) Institute, Université de Liège, Allée du 6 Août 19C, 4000 Liège, Belgium
- ³ Astrobiology Research Unit, Université de Liège, Allée du 6 Août 19C, 4000 Liège, Belgium
- ⁴ Instituto de Astronomía, Universidad Nacional Autónoma de México, Ciudad Universitaria, Ciudad de México 04510, México
- ⁵ Instituto de Astronomía, Universidad Nacional Autónoma de México, Apdo. Postal 877, 22800 Ensenada, B.C., México
- ⁶ Universidad Nacional de Córdoba - Observatorio Astronómico de Córdoba, Laprida 854, X5000BGR, Córdoba, Argentina
- ⁷ Consejo Nacional de Investigaciones Científicas y Técnicas (CONICET), Buenos Aires, Argentina
- ⁸ Department of Physics, University of Warwick, Gibbet Hill Road, Coventry CV4 7AL, UK
- ⁹ Centre for Exoplanets and Habitability, University of Warwick, Gibbet Hill Road, Coventry CV4 7AL, UK
- ¹⁰ Oukaimeden Observatory, High Energy Physics and Astrophysics Laboratory, Cadi Ayyad University, Marrakech, Morocco
- ¹¹ Center for Astrophysics | Harvard & Smithsonian, 60 Garden Street, Cambridge, MA 02138, USA
- ¹² Observatoire astronomique de l'Université de Genève, 51 chemin des Maillettes, 1290 Versoix, Switzerland
- ¹³ Department of Earth, Atmospheric and Planetary Sciences, Massachusetts Institute of Technology, Cambridge, MA 02139, USA
- ¹⁴ Instituto de Astrofísica de Canarias, Vía Láctea s/n, 38205 La Laguna, Tenerife, Spain
- ¹⁵ Department of Astronomy, 501 Campbell Hall, University of California at Berkeley, Berkeley, CA 94720, USA
- ¹⁶ Observatori Astronòmic Albanyà, Camí de Bassegoda s/n, Albanyà 17733, Girona, Spain
- ¹⁷ Department of Earth and Planetary Sciences, University of California, Riverside, CA 92521, USA
- ¹⁸ Centro de Astrobiología (CAB, CSIC-INTA), Dpto. de Astrofísica, ESAC campus 28692 Villanueva de la Cañada (Madrid), Spain
- ¹⁹ Physikalisches Institut, University of Bern, Gesellschaftsstrasse 6, 3012 Bern, Switzerland
- ²⁰ Cavendish Laboratory, J.J. Thomson Avenue, Cambridge, CB3 0HE, UK
- ²¹ Kavli Institute for Astrophysics and Space Research, Massachusetts Institute of Technology, 77 Massachusetts Avenue, Cambridge, MA 02139, USA
- ²² Department of Physics, University of California, Berkeley, Berkeley, CA
- ²³ Kotizarovci Observatory, Sarsoni 90, 51216 Viskovo, Croatia
- ²⁴ Department of Physics & Astronomy, Vanderbilt University, 6301 Stevenson Center Lane, Nashville, TN 37235, USA
- ²⁵ School of Physics & Astronomy, University of Birmingham, Edgbaston, Birmingham B15 2TT, UK
- ²⁶ Società Astronomica Lunae, Castelnuovo Magra, Via Montefrancio 77, Italy
- ²⁷ Department of Aeronautics and Astronautics, MIT, 77 Massachusetts Avenue, Cambridge, MA 02139, USA
- ²⁸ Department of Astrophysical Sciences, Princeton University, NJ 08544, USA
- ²⁹ NASA Ames Research Center, Moffett Field, CA, 94035, USA
- ³⁰ Departamento de Física Teórica y del Cosmos, Universidad de Granada, Campus de Fuentenueva s/n, 18071 Granada, Spain
- ³¹ Instituto de Astrofísica de Andalucía (CSIC), Glorieta de la Astronomía s/n, 18008 Granada, Spain
- ³² Department of A&A, University of California, Santa Cruz, CA 95064, USA
- ³³ Institute for Astronomy, University of Hawaii, 2680 Woodlawn Drive, Honolulu, HI 96822, USA
- ³⁴ Division of Geological and Planetary Sciences, California Institute of Technology, 1200 East California Blvd, Pasadena, CA 91125, USA
- ³⁵ Centre for Astrophysics, University of Southern Queensland, Toowoomba, QLD, Australia
- ³⁶ Department of Physics & Astronomy, University of California Irvine, Irvine, CA 92697, USA
- ³⁷ SETI Institute, Mountain View, CA 94043, USA
- ³⁸ Department of Astronomy, The University of Texas at Austin, Austin, TX 78712, USA