

# THE IMPACT OF A FEW

## the *Institució Catalana de Recerca i Estudis Avançats (ICREA)*

Nicolas Robinson-Garcia\*, Evaristo Jiménez-Contreras\* and Clara Calero-Medina\*\*  
 \* EC3 Evaluacion de la Ciencia y de la Documentación Científica, Universidad de Granada  
 \*\* Center for Science and Technology Studies (CWTS), Universiteit Leiden

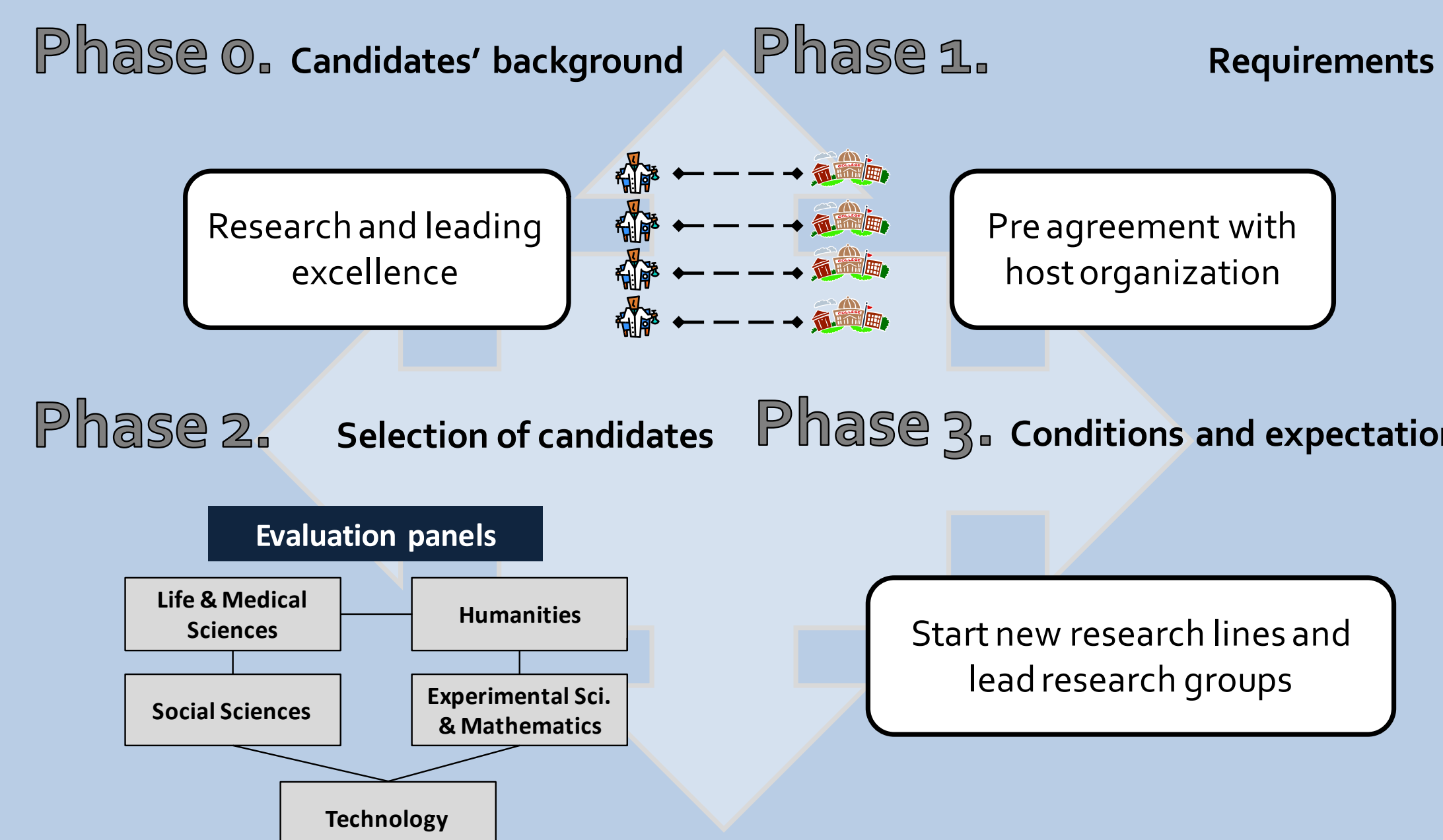


### Objectives

The aim of the study is to analyze the effect specific research policy actions directed at attracting talent have in regional higher education systems. We focus on the ICREA program and its effect in the region of Catalonia in Spain. We analyze the contribution of researchers recruited under this program to the total outcome of highly cited papers by subject categories of each of the host universities.

### Research Questions

- Can we perceive through the number of publications strategic policies when allocating ICREA researchers by universities?
- Are they reinforcing specific fields?
- Are ICREA researchers making a difference in terms of highly cited papers?



### Methods

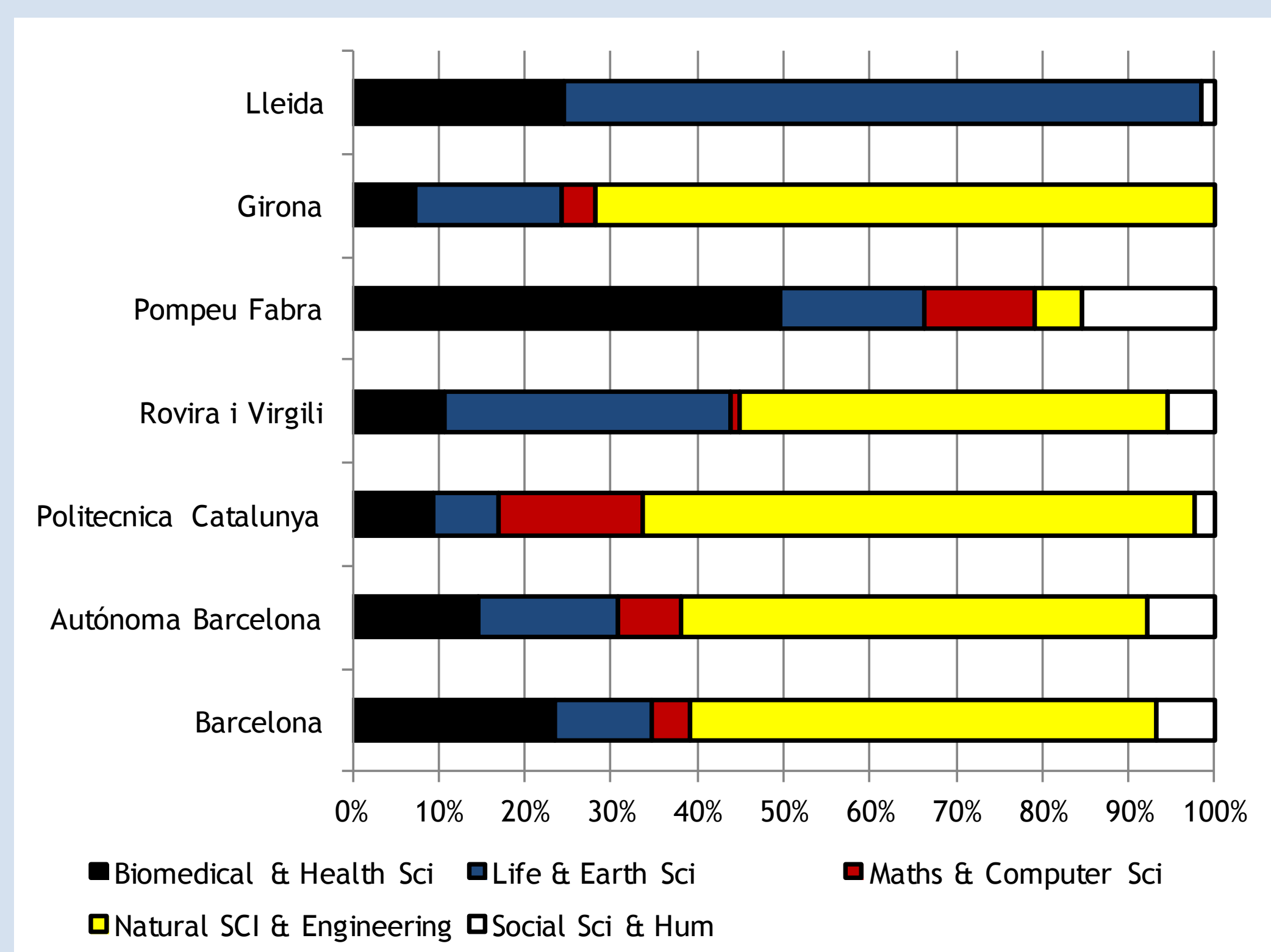
- Data based on the Web of Science indexed publications.
- Five broad research areas
- All subject categories for each university with at least 50 publications and selected those where ICREA publications represented at least 20% of the share.
- We identified highly cited papers in each field. Highly cited papers are publications cited equal or more than the 90th percentile limit of the citation distribution

## Results

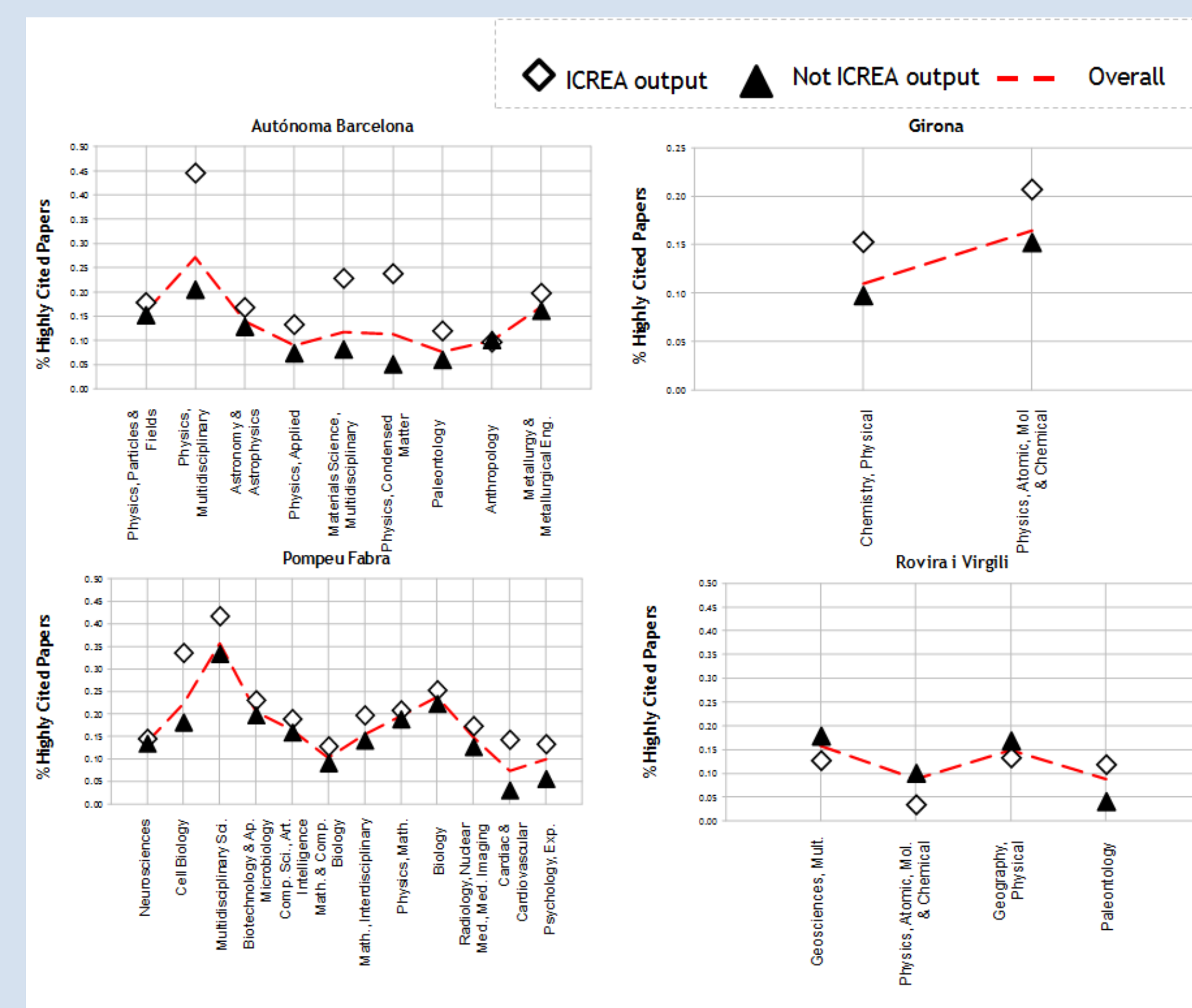
Output of Catalan universities and distribution of ICREA publications for the 2002-2012 time period

University	Biomedical & Health Sci		Life & Earth Sci		Maths & Computer Sci		Natural Sci & Engineering		Social Sci & Hum	
	Pub	%ICREA	Pub	%ICREA	Pub	%ICREA	Pub	%ICREA	Pub	%ICREA
Barcelona	16350	1.72	5840	2.35	1332	4.05	9513	6.83	2538	3.23
Autónoma Barcelona	12385	1.89	5368	4.79	2114	5.44	5588	<b>15.44</b>	2283	5.43
Politécnica Catalunya	792	2.53	1719	0.93	3851	0.91	4912	2.75	298	1.68
Rovira i Virgili	1706	1.88	1265	7.75	833	0.36	2419	6.12	539	2.97
Pompeu Fabra	2720	<b>13.42</b>	630	<b>19.52</b>	707	<b>13.15</b>	291	14.09	1228	<b>9.20</b>
Girona	968	1.14	1220	2.05	536	1.12	1470	7.28	389	0.00
Lleida	850	2.00	1356	3.76	262	0.00	477	0.00	209	0.48

Distribution of ICREA publications by universities and area



Percentage of highly cited papers by university and subject categories



### Conclusions

- Formulas such as ICREA allow Spanish universities, which present low levels of governance (Aghion, et al., 2010), a chance to develop research policy strategies to reinforce certain departments and scientific fields.
- ICREA output shows higher values when focusing on the share of highly cited papers.
- Further research should include bio data for ICREA researchers, in order to further understand the implications of such policy within the regional university system, and compare ICREA with other similar recruiting formulas implemented in other countries.

### References

- Aghion, P., Dewatripont, M., Hoxby, C., Mas-Colell, A., & Sapir, A. (2010). The governance and performance of universities: Evidence from Europe and the US. *Economic Policy*, 25, 7-59.
- Pickin, S. (2001). Spain is a closed culture to foreign researchers. *Nature*, 410, 627.
- Technopolis Group (2011). *Evaluation of ICREA 2001-2011. Final Report.*